

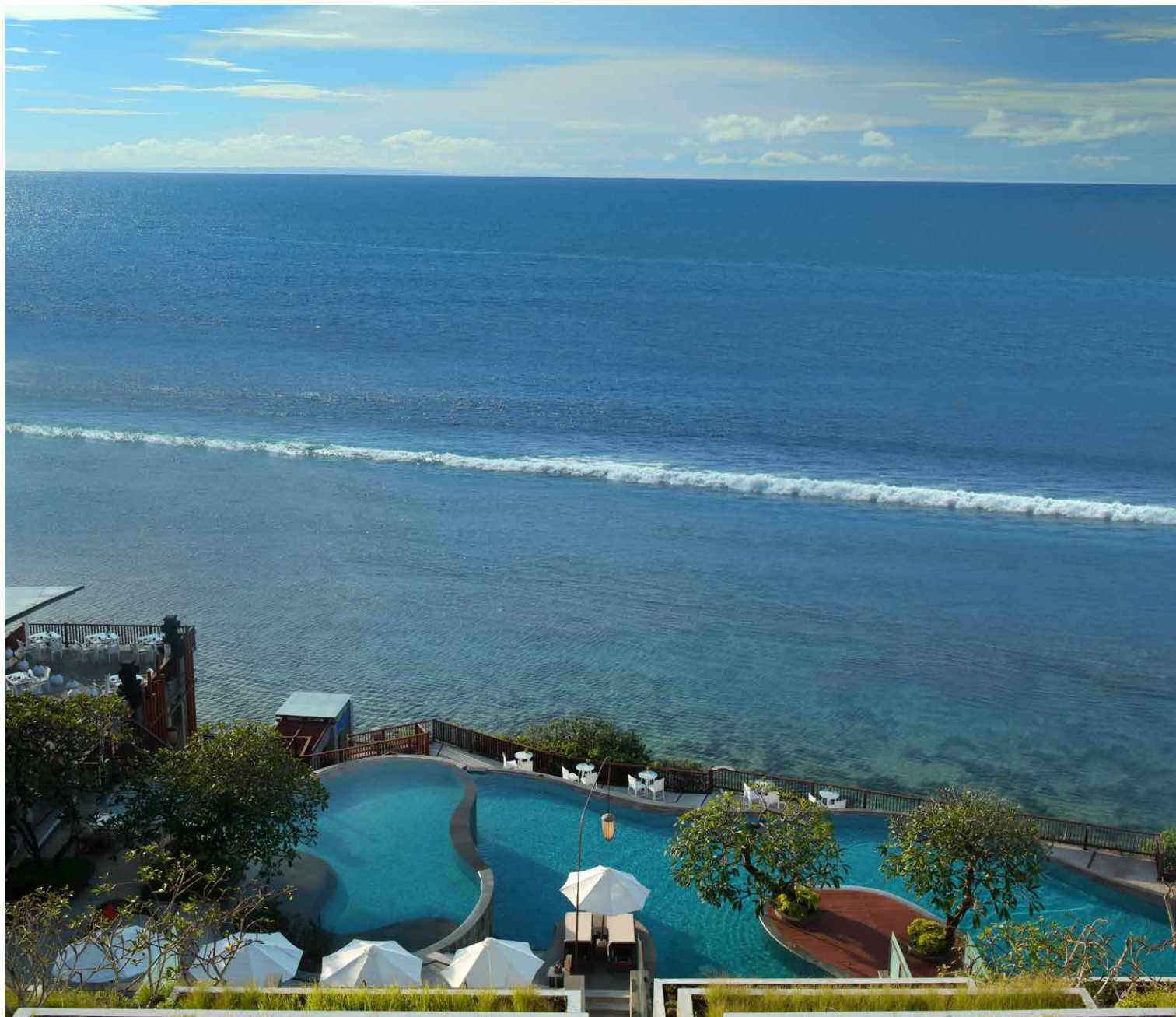


ANANTARA
ULUWATU • BALI
RESORT

CLIFF SIDE HIDEAWAY, REVEALING ENDLESS OCEAN VIEWS.

Anantara Uluwatu Bali Resort represents the unexpected and fascinating that Bali has to offer as it sits among the lush cliffs above Bali heights with stunning sunsets and an amazing ocean views.

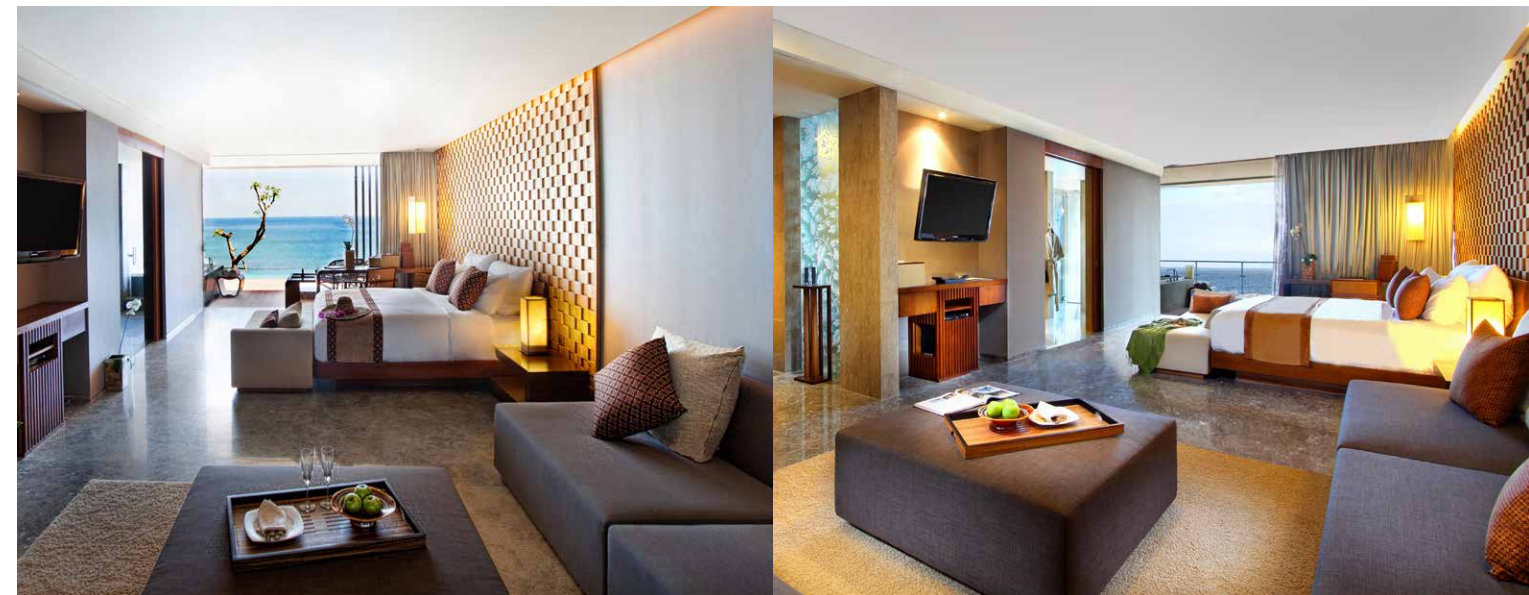
Opening Date:	2013
Address:	Jl. Pemutih, Labuan Sait, Uluwatu, Bali 80361, Indonesia
Telephone:	+62 361 895 7555
Facsimile:	+62 361 895 7600
Email:	uluwatu@anantara.com
Web Address:	bali-uluwatu.anantara.com



LOCATION

Just 40 minutes from the International Airport of I Gusti Ngurah Rai, Anantara Uluwatu Bali Resort has 72 ocean view suites, private pool villas and penthouses to accommodate guests. The remarkable and well-known Uluwatu Temple is only 15 minutes away and the nearest golf club 10 minutes. Spread over 1.7 hectares of unspoiled coastal land, the resort reflects Bali's awe-inspiring natural beauty, spiritual charm, and ocean views and adjacent in front of "Impossible beach", "Bingin beach" and "Padang Padang beach".

Management:	Anantara Hotels, Resorts & Spas
Ownership:	PT. Cakrawala Mitra Usaha
General Manager:	Allan Strahle
Director of Sales & Marketing:	Lami Tjandi



ACCOMMODATION

The 72 ocean view suites, private pool villas and penthouses are designed in contemporary Balinese touches in the heart of surfers paradise, showcasing a seamless blend of innovation, function and indulgence, spaces are filled with natural light and reveal priceless views. Each private haven offers a rich textural and visual experience. High technology entertainment system includes a 42 inch LED TV, docking station and Bose sound system, and a signature Jacuzzi for two on the balcony.

Ocean View Suites

Located in the main hotel building, Ocean View Suites offer a spacious 84 sqm. Interiors combine touches of elegant design with colourful accents of indigenous Balinese art. Taking full advantage of the stunning ocean view, each suite features full length glass windows, as well as an outdoor Jacuzzi on the balcony for indulgent soaks with a dramatic Indian Ocean panorama.

Garden View Pool Suites

Conveniently located on the ground floor, each Garden View Pool Suite encompasses 100 sqm of luxurious amenities. Open your balcony's sliding glass doors and step onto your pool side terrace, where your private plunge pool and an outdoor Jacuzzi overlook an inspirational scene of exotic gardens.

Ocean View Pool Suites

Conveniently located on the ground floor, Pool Access Suites span 100 sqm and offer the best of both worlds - direct access to your infinity pool and awe-inspiring Indian Ocean views. Open the living room sliding glass doors and step onto your pool side terrace, where an outdoor Jacuzzi overlooks the ocean.

Ocean Front Suites

With a unique location close to the cliff edge, these hideaways are defined by a chic design that beautifully frames the stunning seascape of Uluwatu. Cascading down the cliff in a feat of ingenious modern architecture, Ocean Front Suites encompass of 84 sqm, with sliding glass walls and glass wrapped balcony to bathe each suite in natural light. Adding an even greater sense of luxury, each balcony boasts our signature open air Jacuzzi in which to soak up the ocean front splendour.



Ocean Front Pool Suites

With a prime position at the front of the resort, Ocean Front Pool Access Suites directly face the ocean horizon to provide a view of evolving inspirations. Covering an impressive 100 sqm, the inviting outdoor space comprises of a deck edging the private infinity pool. Step inside to find a cool and calming interior that is designed to the highest standards of contemporary style.

Garden Pool Villas

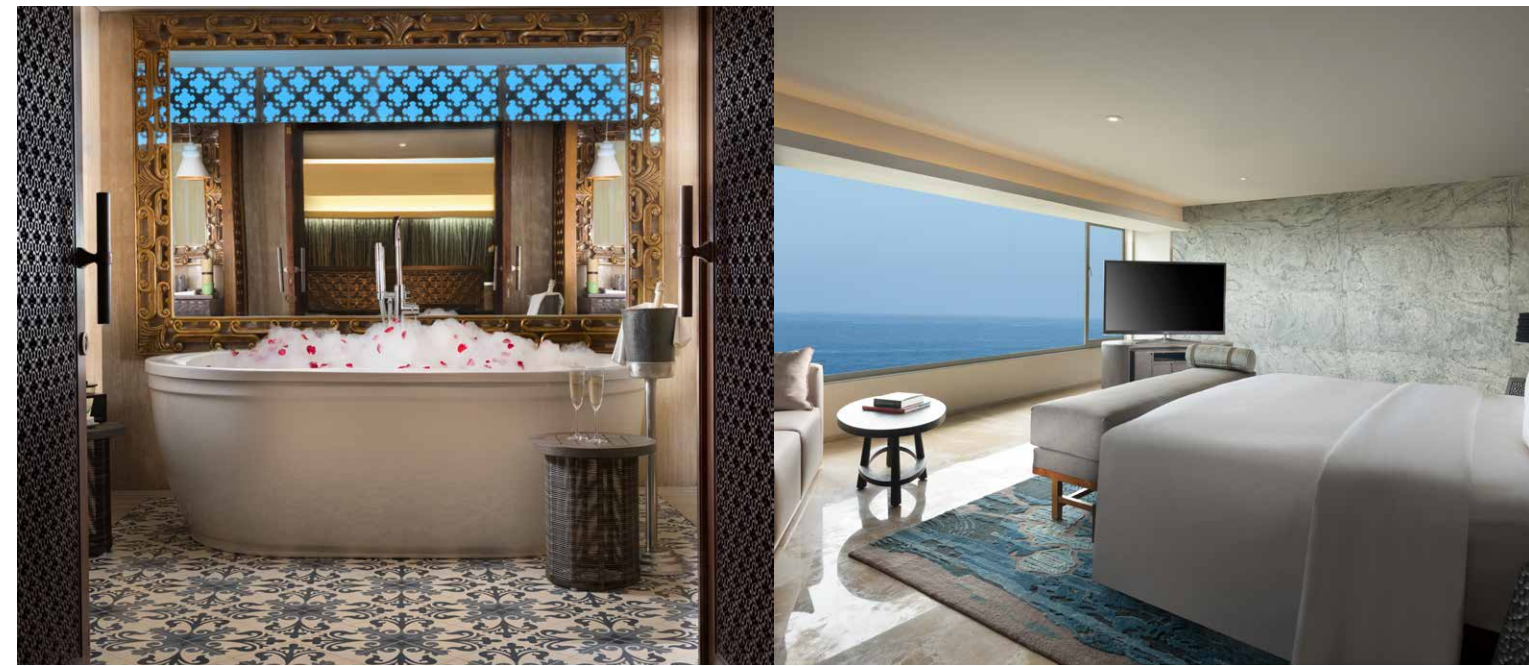
Luxury of space meets jaw dropping natural beauty and the best of modern design. These sumptuous two or even three bedrooms sanctuary cover an expansive 296 to 330 sqm. Each villa offers the allures of a private pool, sun deck, a sala that is perfect for al fresco dining, and a wrap around tropical garden. Enhanced by spacious living and dining areas, design encompasses glass walls and charming touches of Balinese artistry. Guests can enjoy a wrap around balcony, while occupants of the master bedroom can relax in the open- air Jacuzzi.

Ocean View Pool Villa

Ocean View Pool Villas boast a cliff-side setting with dramatic ocean vistas. Comfortable designer style is accented by modern interpretations of Balinese culture. Expansive windows frame the exotic coastal scene, enjoyed from separate lounge and dining spaces. A private plunge pool and sundeck entice lazy days. Options for a 296 sqm two bedroom villa and a generous 330 sqm three bedroom villa are perfect for sharing with family and friends.

Ocean Front Pool Villa

Ocean Front Pool Villas enjoy pride of place, right beside the cliff edge, affording an uninterrupted ocean panorama. Unfolding over 296 sqm, these two bedroom sanctuaries blend designer style with the homely luxury of living and dining spaces. Glass walls provide a peerless perspective of coastal beauty. Outside, a private plunge pool and sundeck offer the freedom of floating and lounging, overlooking a surfer's paradise.



Dedari Penthouse

Elevating romantic indulgence, the one bedroom Dedari Penthouse is set high on the cliff-side and boasts sensational ocean views. Admire rolling waves and Bali's spectacular sunsets from your living and dining space, or while soaking in the bathtub for two. Drift outside to the deck for Jacuzzi spa relaxation, comfy daybed sunbathing and dining under the stars.

ROOM FEATURES

- King Mattress
- Internet access / WiFi
- Kitchenette and dining areas (Villa)
- Electronic in-room safe Separate living area (Villa)
- International Satellite TV
- IDD Telephone Signature balcony jacuzzi for two
- Nespresso Coffee machine and Tea Kettle facilities
- Individually controlled air conditioning
- Hi-Fi home entertainment system, Bose and LED TV
- Hairdryer
- Double-sized 'rain' shower
- In-room minibar

GUEST SERVICES

- Meeting Room
- Tour & Excursion Counter
- WiFi throughout resort
- Dewa Dewi Wedding Chapel
- Mini Theatre
- Shuttle to other local beaches
- Complimentary iPad rental upon request
- Laundry and Pressing Service



ROOM TYPE	TOTAL ROOM	SIZE (sqm)	MAX ADULTS
Ocean View Suite	31	84	3
Garden View Pool Suite	5	100	3
Ocean View Pool Suite	5	100	3
Ocean Front Suites	14	84	3
Ocean Front Pool Suites	6	100	3
2 Bedroom Garden Pool Villas	1	296	4
3 Bedroom Garden Pool Villas	2	330	6
2 Bedroom Ocean View Pool Villas	2	296	4
3 Bedroom Ocean View Pool Villas	2	330	6
2 Bedroom Ocean Front Pool Villas	2	296	4
Dedari Penthouse	1	179	3
Dewata Penthouse	1	370	4
TOTAL ROOM	72		

DINING



360 Restaurant

Start your day with an extensive breakfast buffet. Choose from a wonderful selection of light and healthy dishes for lunch. Return for sundowner cocktails prepared just the way you like them, or try one of our expert mixologist's unique island inspired creations at our lounge. Let our caring staff pamper you with our fine range of wines, cocktails and tapas sized bites. Evening dining marries gastronomic excellence with an atmosphere of simple elegance.

Opening hours: Breakfast: 7.00 am – 10.30 am
 Lunch: 11.00 am – 5.30 pm
 Dinner: 6.30 pm – 10.30 pm
 Lounge bar: 10.30 am – 11.00 pm

Cuisine: Indonesian, Balinese, Asian and Western

Seating capacity: 100



SONO Teppanyaki

Discover the interactive thrill of live cooking shows as you dine on a delectable fusion grill menu, crafted by our master Chef. Sample the very best of modern Japanese cuisine, accompanied by the dramatic backdrop of the Bali sunset beyond the horizon and rolling ocean waves.

Opening hours: 6.30 pm – 10.30 pm
 Cuisine: Contemporary Japanese Cuisine
 Seating capacity: 15



Sea.Fire.Salt

Gaze over reflections of azure water as we stimulate your taste buds. Inspired by contemporary fusion style, lunch and dinner menus feature popular western and bold local dishes, riveting Asian creations and a nod to Mediterranean cuisine. All time favourites include seafood scooped fresh from the ocean is flame grilled to perfection. Imaginative, freshly prepared salads can be followed by the pleasures of barbeque dinner. Enjoy a sophisticated wine and champagne menu, signature mixologist cocktails, and a band sessions.

Opening hours: 11.00 am – 10.30 pm
 Cuisine: Asian and Western cuisine
 Seating capacity: 50



Dining by Design

Choose any venue you prefer around the resort as your romantic desire speaks. The unique ambience of our resort creates an idyllic setting for an unforgettable dining experience. Let the sunset, the ocean and the stars be the backdrop of your romance and our attentive staff be the magic spirit to care for you

Pool Island: 8.00 pm – 11.00 pm
 View Point: 6:00 pm – 9.00 pm



Spice Spoons Cooking Class

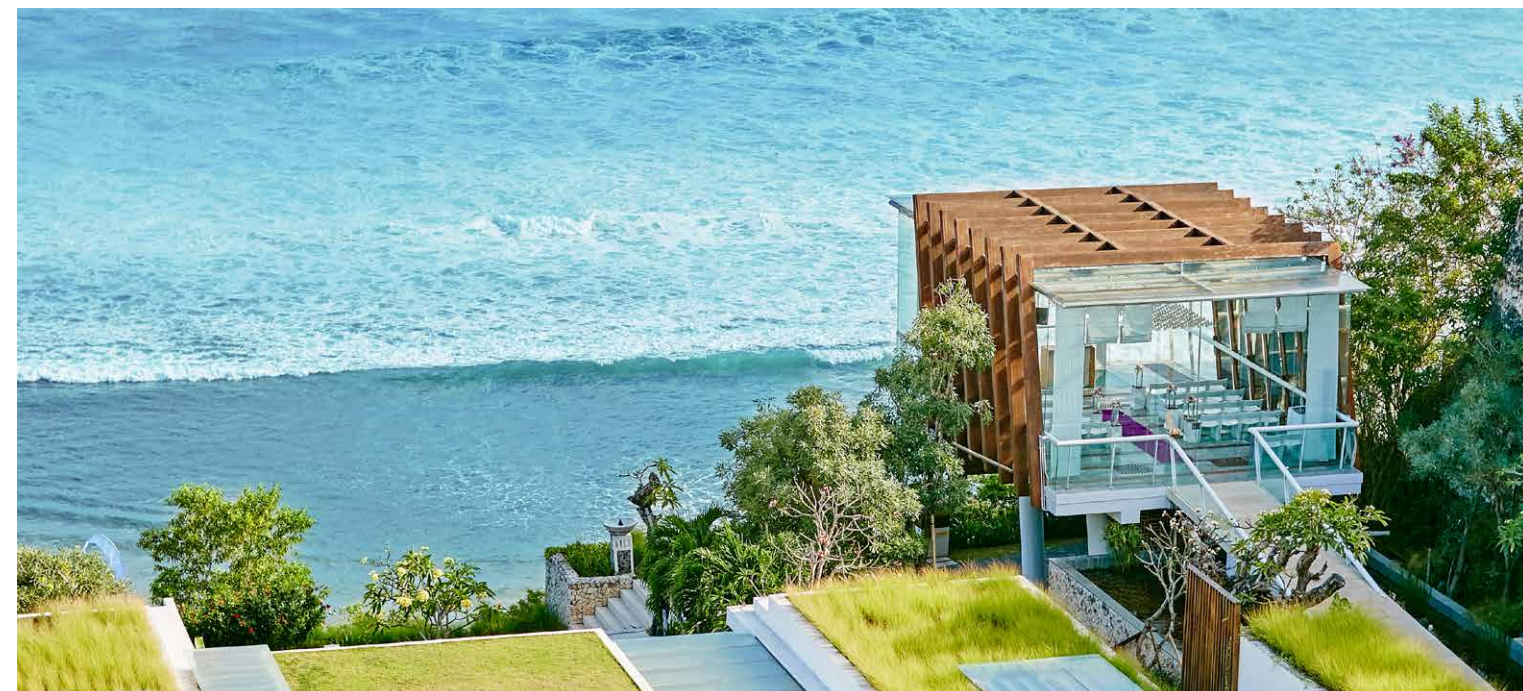
Step behind the scenes of Indonesia's exotic culinary culture with an interactive Spice Spoons cooking class. Enjoy an informative theory session, before a step by step class guided by a master chef.



ACTIVITIES

At Anantara we invite guests do it all or nothing at all in the lap of luxury, and perhaps discover a new passion.

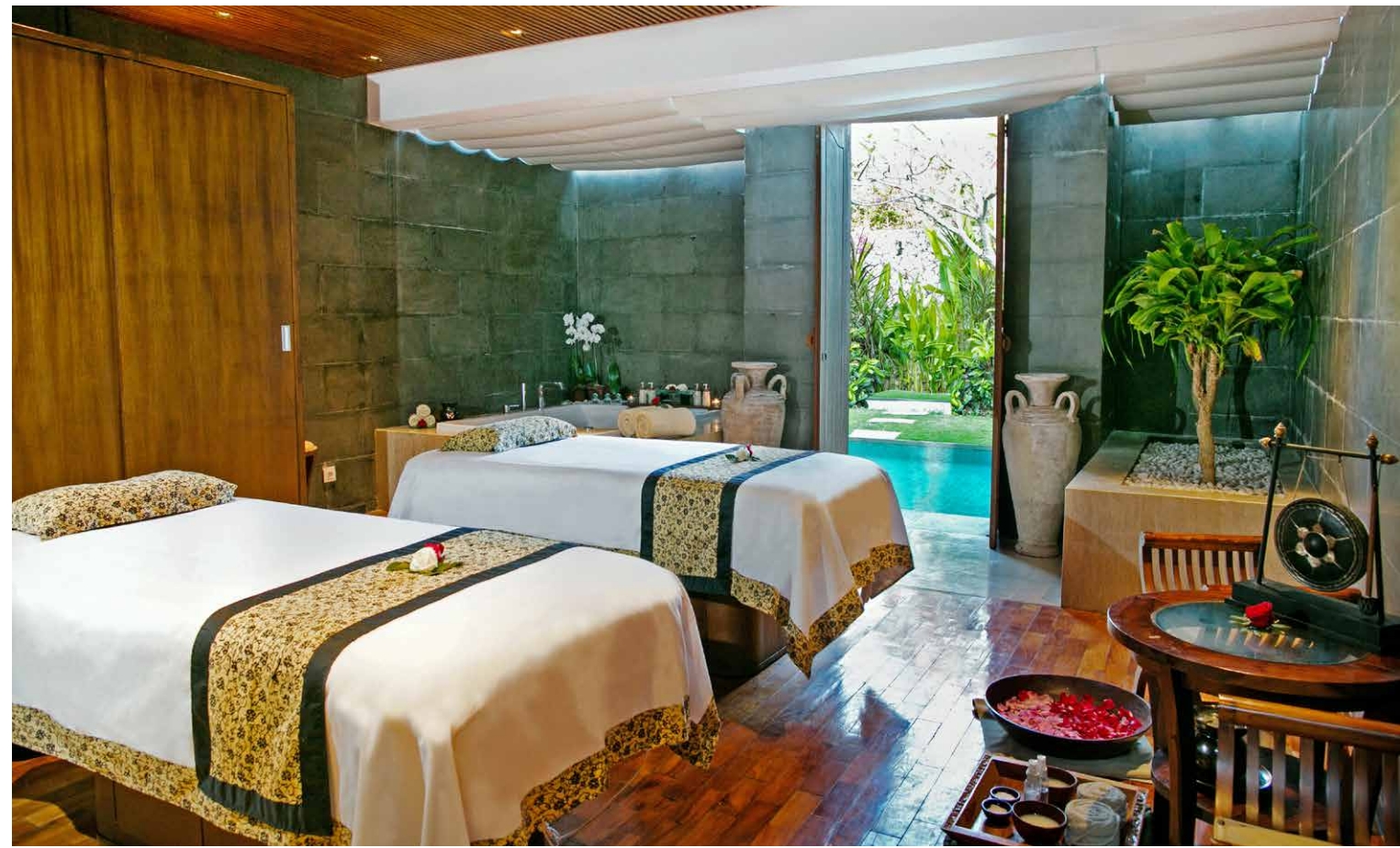
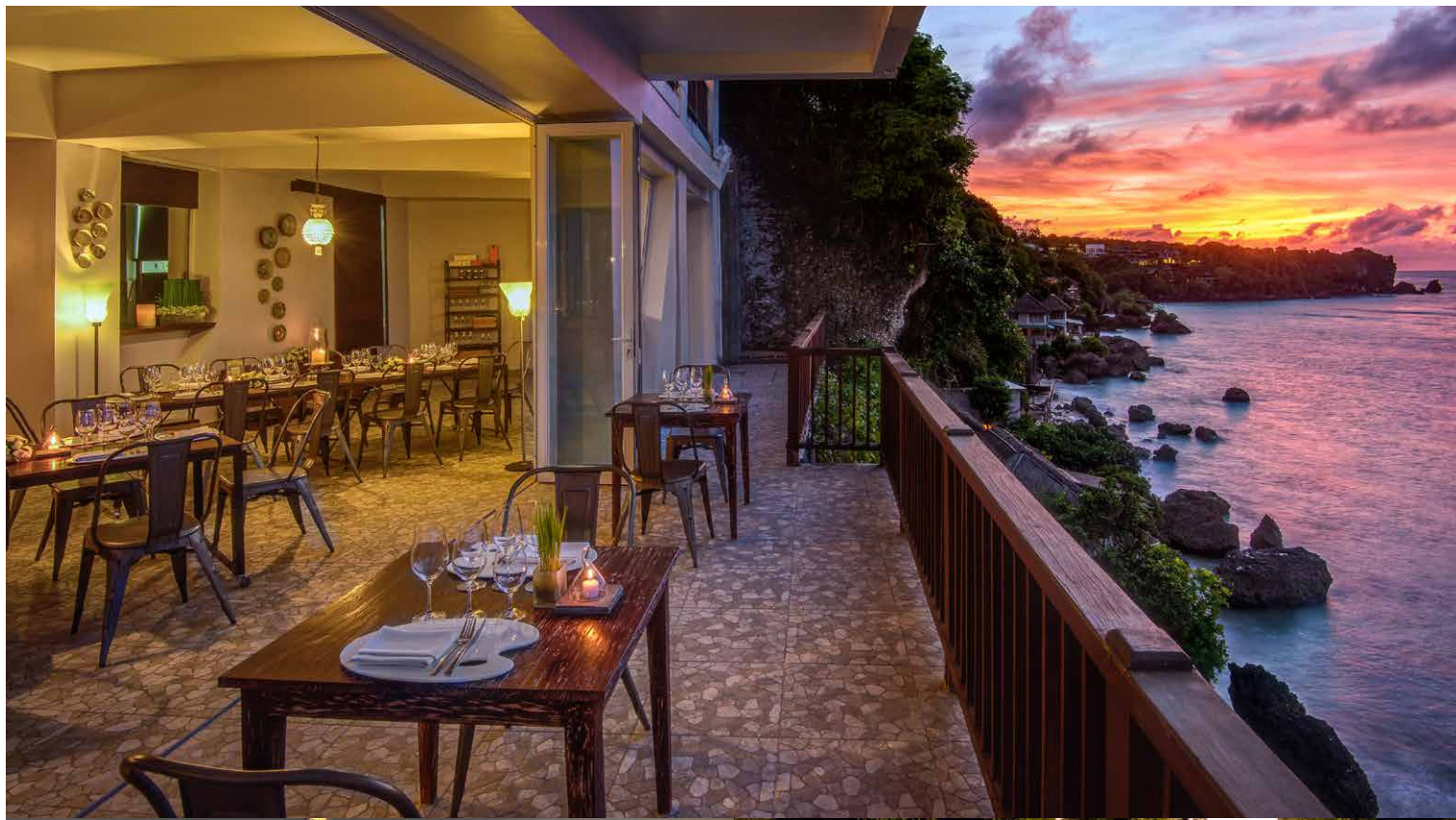
- Surfing
- Cliff edge infinity swimming pool
- Fitness Centre
- Yoga Class
- Biking
- Spice Spoons cooking class
- Ceramic making class
- Batik Painting
- Balinese Dance
- Towel art
- Coconut Leaf Weaving



WEDDING

Sheer cliffs rising up out of azure waters, the lull of waves lapping at the base. The hypnotic rhythm of Balinese gamelan, ocean spray and the light scent of incense. From traditional to contemporary, Anantara Bali Uluwatu Resort is a one stop paradise for weddings in Bali and offers an array of wonderful venues for an unforgettable wedding ceremony. Say 'I do' in our Dewa Dewi Chapel then celebrate with family and friends – an evening of cocktails on the lawn, a banquet in Dewika Lounge or a sit-down dinner for 150 at the resort's 360 rooftop restaurant.

In addition to spectacular weddings, the dedicated event team at Anantara Bali Uluwatu take pride in transforming any special occasion into a one of a kind celebration. Simply let us know your needs and desires, or request our assistance for imaginative suggestions, and we will make perfect every last detail in accordance with your wishes.



ANANTARA SPA

Designed to reflect a traditional Balinese rice barn, Anantara Spa offers a tranquil sanctuary for relaxing and invigorating beauty and wellness journeys. Individual treatments and signature sequences are performed by highly trained therapists, to suit each guest's needs and mood. The extensive treatment menu pays tribute to Indonesia's Spice Islands, as well as ancient wellness secrets from across Asia and advanced western practices at this spa resort in Bali.

Spa Facilities:

- 4 Single Treatment Rooms
- 2 Couple Treatment Rooms
- 1 Bale Treatment
- Salon for hair treatments, as well as manicure and pedicure treatments

Opening hours: 9.00 am – 9.00 pm

MEETINGS & EVENTS

Anantara Uluwatu Bali Resorts offer a stylish rooftop meeting venue, the perfect setting to hold a business meetings and other events. Our meeting rooms are air-conditioned and fully equipped with LCD projector and screen, plus wifi internet access.

Venue	Area		Dimension (WxL)		Height								
	sqm	sq ft	Metres	Feet	Metres	Feet	60	24	15	16	50	50	18
Bali Biru (6 th Fl)	108,56	356,08	(6,6x7,2) +(5,7x10,8)	(21,65x1,22) +(18,7x35,42)	2,45	8,04	60	24	15	16	50	50	18
Dewika (cliff side)	111,05	364,24	(6,5x9,7) +(4x12)	(21,32x31,82) +(13,12x39,36)	2,8	9,18	50	24	20	24	50	60	24





LOCAL AREA EXCURSIONS

Every day Anantara Uluwatu Bali Resort features range of organised and do it yourself excursions that let you see beyond the boundaries of the resort, immerse yourself in Bali's timeless dance culture, or feel the world premiere surfing destination.

- Daily Shuttle to Uluwatu Temple and Kecak Fire Dance Show
- Daily Shuttle to Nearby Beaches
- Golfing
- Surfing

AIRPORT TRANSPORTATION

Bali's Ngurah Rai International Airport offers direct or connecting services to destinations all over the world. Domestic airlines link Bali to all of Indonesia's major cities, including the capital Jakarta, with regional airlines.

Ngurah Rai International Airport is located in Bali's capital Denpasar, approximately 20 kilometres from the resort. Pre-paid public taxis are available from clearly marked counters after exiting immigration and customs. Alternatively, arrive in style with Anantara's limousine service.

To book the limousine service to our resort, please contact us for further information and to arrange your pick-up time by e-mailing uluwatu@anantara.com

Voltage: 220 - 240AC, 50 Hertz

Currency: Indonesian Rupiah (IDR)

Time Zone: GMT +8 hours (Singapore, Hong Kong, Malaysia, Beijing)

Climate: Bali enjoys a year round warm tropical climate with temperatures ranging between 27°C and 33°C. Two seasons are experienced: intermittent rain showers between October and April, followed by sunny season from May to September.