



STEP INTO A WORLD OF ADVENTURE

Prepare yourself for an electrifying journey filled with thrills and spills. From heart-pounding ziplining adventures to the exhilarating human slingshot, every moment at our park is designed to get your adrenaline pumping. Feel the rush as you soar through the air and experience the thrill of flying like never before.

Opening hours:
10.00 am - 8.00 pm

TICKET PRICES

QAR 300 per adult (12 years and above) includes beach and pool access, 2 hours access to Adventure Park attractions and 1 zipline ride

QAR 250 per child (5 to 11 years) includes water park access, kids' club, 2 hours access to Adventure Park attractions

Additional Zipline ride QAR 100

[CLICK HERE FOR SPECIAL OFFERS](#)

TRANSPORTATION TO THE ADVENTURE PARK

A two-way luxury boat transfer to and from Al Shyoukh Port to Banana Island Resort Doha and return is included.

[Click here for Guest boat trip schedule](#)

+974 4040 5041

reservations.doha@anantara.com



LOCATION

The Banana Island Adventure Park on Banana Island is just a 30-minute catamaran ride from our private Al Shyoukh Terminal on the Corniche in downtown Doha. Our 45-passenger catamaran operates at regular intervals throughout the day, making access to the Adventure Park easy.

ADVENTURE PARK MAP



- | | | |
|--------------------------|-------------------------|-----------------------|
| 1 ENTRANCE | 5 ROPE COURSE | 9 ZIPLINE |
| 2 TRAINING AREA | 6 AIRBAG JUMP | 10 TUBBY JUMP |
| 3 HUMAN SLINGSHOT | 7 CLIMBING WALLS | 11 GIANT SWING |
| 4 BOUNCING NETS | 8 FREE FALL | |

LET THE FUN BEGIN !

The resort offers luxury accommodation on a crescent of golden beach. It's the perfect getaway for family adventures, ocean thrills, or tranquil spa experiences.

ROPE COURSE

Embark on an unforgettable adventure across three floors with 95 games, including rope courses and obstacles. Test your balance, agility, and bravery with endless excitement!

Height Limit: 130 – 200 cm
Weight Limit: 30 - 110 kg
Age Limit: Minimum 10 years



ZIPLINE

Soar to new heights with the longest zipline experience in Doha! Enjoy breathtaking views from a 21-metre tower and two 275-metre tracks for an unforgettable adventure.

Height Limit: 130 – 200 cm
Weight Limit: 30 - 110 kg
Age Limit: Minimum 12 years



AIRBAG JUMP

Experience the thrill of Airbag Jumps with two levels: 6 metres for beginners and 9 metres for advanced jumpers. Enjoy safe, exhilarating leaps, whether you are a first-time jumper or a seasoned adrenaline junkie.

Height Limit: 150 – 190 cm
Weight Limit: 1st Floor: 50 - 90 kg
2nd Floor: 50 - 80 kg
Age Limit: Minimum 10 years



CLIMBING WALL

Explore four climbing walls around the Adventure Tower: two at 8.5 metres for beginners and two at 11.5 metres for advanced climbers. Immerse yourself in the thrill of the climb as you navigate intricate handholds and footholds carefully crafted to mimic the complexity of natural rock formations. Challenge yourself on Doha's highest climbing wall!

Height Limit: 130 – 200 cm
Weight Limit: 30 - 110 kg
Age Limit: Minimum 10 years



GIANT SWING

Our Giant Swing attraction offers the perfect blend of adrenaline-pumping excitement and breathtaking sea views, making it an unforgettable experience for thrill-seekers of all ages. The Giant Swing, accommodating up to 3 people at a time, allows friends and family to share the fun.

Height Limit: 130 – 200 cm **Weight Limit:** 30 - 110 kg **Age Limit:** Minimum 12 years



BOUNCING NETS

Our park offers thrilling adventures for kids with two-floor bouncing nets, colorful balls, and Pilates balls, seamlessly integrated into the Ropes Course for endless fun.

Height Limit: 110 – 140 cm **Weight Limit:** 20 - 50 kg **Age Limit:** 3 - 12 years



HUMAN SLINGSHOT

Experience the thrill of the Human Slingshot, a heart-pounding experience that defies gravity and propels you to unimaginable speed, soaring 18 metres upward within just one second!

Height Limit: 150 – 200 cm **Weight Limit:** 50 - 110 kg **Age Limit:** Minimum 10 years



TUBBY JUMP

Experience the thrill of Tubby Jump: glide down a ramp seated in an inflated donut, launch into the sky, and land safely on a massive air pillow. It's a true test of courage and skill!

Height Limit: 150 – 180 cm **Weight Limit:** 50 - 90 kg **Age Limit:** Minimum 10 years



FREE FALL

Experience the thrill of free fall from 21 metres high! As you step off the platform, feel the rush of wind and gravity in an electrifying descent. Are you ready to take the plunge?

Height Limit: 130 – 200 cm **Weight Limit:** 30 - 110 kg **Age Limit:** Minimum 7 years



FOOD & BEVERAGE

Discover a globe-trotting culinary adventure awaiting you on our island paradise! Indulge in an array of tantalizing flavours from around the world, conveniently nestled in one spectacular destination. Rest assured, all our dining venues maintain an alcohol-free environment, perfect for families and friends to enjoy together.

TEDS



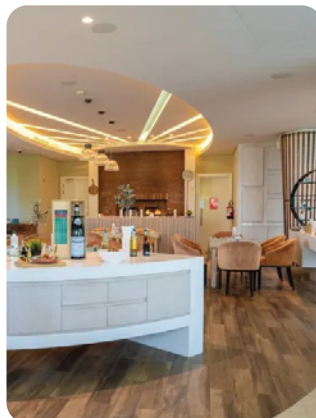
Once you've explored the Adventure Park, make sure to swing by Ted's. Slide into a cozy booth and treat yourself to a classic burger and shake experience, featuring signature flavors like Oreo, Rocky Road, and mint chocolate chip. For those special occasions like kids' birthday parties, our private dining area is ideal, offering entertainment suitable for all ages.

Cuisine: International

Opening hours:

Daily from 12.00 pm to 10.00 pm

RIVA



After your adventure at the park, immerse yourself in the flavors of contemporary Mediterranean cuisine. Indulge in an array of traditional delicacies, from hearty salads to homemade pasta dishes and delectable pizzas.

Cuisine: Italian

Opening hours:

Mon - Sat: 1:00 pm - 10:00 pm

Closed on Sundays

Q LOUNGE & RESTAURANT



Q Lounge is the perfect spot for all-day relaxing dining, either indoor or al fresco by the poolside enjoying scenic vistas surrounded by the soothing sea breeze. Indian cuisine lovers will discover a mouth-watering collection and guests looking for international flavours will find a selection of comfort food and snacks.

Cuisine: Indian & International

Opening hours:

Pool and Beach Service from 9:00 am - sunset

A la Carte Lunch and Dinner from 12:00 pm - 12:00 am

TANZERIN



With the azure waters of the Arabian Gulf as your backdrop and your toes buried in the warm sand, Tanzerin presents a truly unparalleled dining experience. Treat your taste buds to our varied menu, boasting a tantalizing array of light bites. Refresh yourself with our invigorating selection of freshly squeezed juices and revitalizing beverages.

Cuisine: Drinks and light bites

Opening hours:

Daily from 10:00 am - sunset

Reservations: fbreservations.adoh@anantara.com | +974 4040 5073



SAFETY EQUIPMENT

Experience adventure with peace of mind!

Your safety is paramount at Banana Island Adventure Park. We strictly adhere to rigorous safety protocols and conduct regular inspections and maintenance checks on all our equipment to ensure optimal performance and reliability. Should you have any questions or concerns about safety during your visit, our friendly staff are here to guide you.

SAFETY BRIEFINGS

Before embarking on any adventure, our experienced staff conducts comprehensive safety briefings and provides training sessions to ensure that you are fully equipped with the knowledge to use the equipment safely.

STURDY HELMETS

Our sturdy helmets offer essential protection for your head during activities such as zip lining or rope courses. Experience the thrill of Banana Island Adventure Park with confidence, prioritising safety without compromising the thrill.

TOP-OF-THE-LINE EQUIPMENT

Our zipline courses feature top-of-the-line pulleys and trolleys, ensuring smooth and safe rides for all participants.

SMART BELAY X

Smart Belay X enhances safety with cutting-edge technology and automatic locking, securely attaching adventurers. Its individual control and adaptability make it perfect for zip lines, rope courses, and climbing walls, ensuring a user-friendly, personalized experience.



GOOD TO KNOW

Rules and Regulations

Every activity is conducted with the highest standards of care and professionalism. So, you can relax and focus on enjoying the experience to the fullest.

To ensure a safe and enjoyable experience for all our guests, please take note of the following rules and regulations:

- The management of Banana Island Adventure Park reserves the right to refuse service to individuals who do not comply with entry conditions and safety rules. Failure to follow instructions may pose risks to yourself and others.
- Participation in park activities is at your own risk. The management holds no responsibility for damage to health or property resulting from non-compliance with rules and regulations.
- For safety purposes, individuals with major medical concerns such as back or neck injuries, dislocations, asthma, epilepsy, pregnancy, recent fractures, high blood pressure, neurological disorders, heart diseases, or osteoporosis are advised against participation.
- Participants will undergo a detailed safety briefing and must use the provided safety equipment. Activities require agility, strength, and endurance, and participants must certify their fitness for the course.
- Guests must meet age, height, weight, and health requirements. Those under 18 must be supervised by an adult who ensures compliance with safety measures.
- The Adventure Park maintains a strict alcohol and drug-free policy. Individuals under the influence are prohibited from entry or participation.
- Payment of applicable fees is required before accessing the adventure course.
- Guests must adhere to all rules, safety instructions, and signs during their visit.
- Adventure courses must not be used without proper fastening of safety straps to lifelines. Failure to do so can endanger lives.
- Safety equipment is personal and non-transferable. Guests are financially responsible for equipment usage and must return it promptly after use. Damage caused by negligence will incur charges.
- Tickets cannot be exchanged, refunded, transferred, or resold, and are considered void if damaged.
- Park personnel may halt customer activities if rules are violated, commands are ignored, or safety concerns arise.
- Any decline in health during activities requires immediate cessation of participation.
- The management of Banana Island Adventure Park is not liable for loss, damage, or theft. Lockers are provided for guest use.
- Certain activities forbid the use of handheld objects such as cameras, video cameras, phones, etc. Please follow the instructions.
- CCTV surveillance monitors the entire park premises for safety and security purposes.
- The management of Banana Island Adventure Park reserves the right to deny access or remove any person from the park for any reasons mentioned above, or for non-compliance with legal or government requirements of the State of Qatar.



FAQs

What are the opening hours of the Adventure Park?

Our Banana Island Adventure Park is open from 10.00 am to 8.00 pm every day of the week.

Are there any height or age restrictions for the attractions?

Yes, certain attractions have height and age restrictions for safety reasons. Please refer to our website or inquire at the park for specific details.

How can I purchase tickets to the Adventure Park?

Tickets can be purchased online through our website.

Does the Adventure Park offer group discounts or packages for birthday parties or corporate events?

Yes, we offer group discounts and special packages for birthday parties, corporate events, and other group outings. Please contact our events team at +974 5200 0171 for more information.

Can I bring my own food and drinks into the Adventure Park?

Outside food and drinks are not permitted inside the park. However, we offer a variety of dining options to suit your needs.

Are there locker facilities available at the Adventure Park?

Yes, we offer locker rentals for guests to store their belongings securely while enjoying the attractions.

What safety measures are in place at the Adventure Park?

Safety is our top priority. We have trained staff, regular inspections, and safety protocols in place to ensure a secure environment for all guests.

Can I bring my own equipment for certain activities like rock climbing or zip-lining?

For safety reasons, we provide all necessary equipment for activities like rock climbing and zip-lining. Our equipment is regularly inspected and maintained to ensure your safety during your adventure.

Are there any specific clothing or footwear requirements for visiting the Adventure Park?

Yes, we recommend wearing comfortable clothing that allows for freedom of movement, such as athletic wear. Avoid loose clothing or anything with pockets that may become a hazard during the activity. Closed-toe shoes with a secure fit are also recommended for your safety and comfort during your adventure park experience.

Why are certain activities forbidding the use of handheld objects like cameras, video cameras, phones, etc.?

Certain activities may impose restrictions on handheld objects for various reasons such as privacy concerns, safety regulations, or to maintain the integrity of the activity.

RESORT MAP

