

FACTSHEET



JOURNEY INTO ICONIC
DESERT LUXURY

Relax, unwind and embrace the enigmatic allure of the Empty Quarter at the newly-rejuvenated, award-winning Qasr Al Sarab Desert Resort by Anantara. Celebrating ten years of luxurious bliss, the resort is proud to present discerning guests with an array of sumptuous accommodation, delicious flavours, thrilling desert activities and a signature blend of indulgences, Arabian hospitality and contemporary charm.



AN AWE-INSPIRING LOCATION

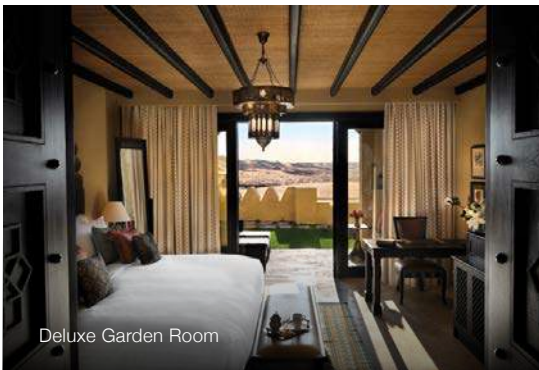


Located just over two hours from Abu Dhabi International Airport, the resort is nestled amongst the majestic flame-coloured dunes of the Rub' Al Khali. As the largest, uninterrupted sand desert in the world, this untouched environment is the perfect backdrop for your luxurious stay, complemented by double-speed WiFi and several new facilities as well as offerings across the resort.

WAKE UP TO BLISS

Framed by desert vistas, our 206 rooms and suites are sanctuaries appointed with modern conveniences, plush Middle Eastern fabrics, bronze chandeliers, oversized bathtubs and rain showers. Ranging from the Deluxe Garden Room to the Three Bedroom Anantara Pool Villa, each spacious guestroom enjoys stunning views of the infinite Rub' Al Khali as well as private spaces for you to enjoy.

Meanwhile, our Royal Pavilion Villas are palatial retreats enjoyed only by the few. Situated away from the main resort, these villas are tended to by a Personal Villa Host and feature one king-size bedroom, separate living and dining areas, private plunge pools and more.



Deluxe Garden Room

Each of the 206 elegant rooms enjoys picturesque desert views and luxurious decor to reflect the resort's Arabian heritage, with earthy hues, beautiful Middle Eastern fabrics and bronze chandeliers. Every bathroom features an oversized bathtub and rain shower. Following our resort-wide renovation in 2019, each guestroom is equipped with Chromecast and Apple TV.

Deluxe Garden Room

With a private terrace and direct access to lush gardens, after a day of adventure in the desert, these rooms are the perfect place to relax and watch the sun setting behind the spectacular sand dunes.



Deluxe Balcony Room

Deluxe Balcony Room

Situated on the upper floor, the seating area on the private balcony of these rooms offers the perfect vantage point to admire the dramatic desert valley vistas.



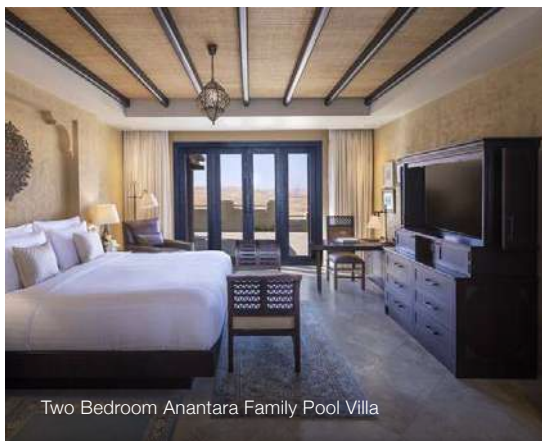
One Bedroom Anantara Pool Villa

Deluxe Terrace Room

These beautifully-appointed corner rooms with king beds, located on the upper floor, are the perfect combination of indoor and outdoor living, with a 45 sqm rustic-style terrace and impressive desert views.

One Bedroom Anantara Suite

Located on the ground floor, these suites offer a spacious living room, a large terrace with lounge and dining furniture, as well as a garden and infinite desert views.



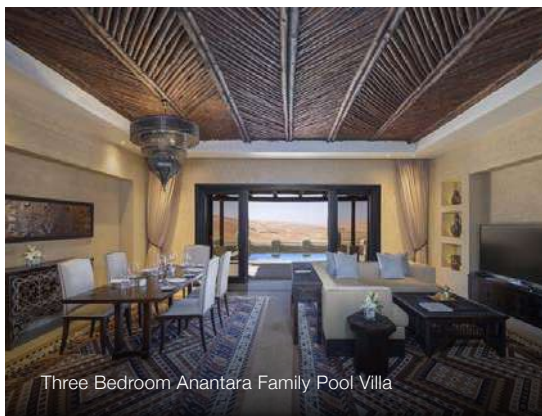
Two Bedroom Anantara Family Pool Villa

One Bedroom Anantara Pool Villa

The ultimate choice for a luxurious getaway. Each villa features a private pool, sun bed, cabana, outdoor shower and al fresco dining area, complemented by stunning desert scenery and dedicated personal villa host.

Two Bedroom Anantara Family Pool Villa

Ideal for family getaways or friends luxury escapes, these villas feature one king and one twin bed rooms, a comfortable living area, the services of a personal villa host and impressive outdoor facilities with uninterrupted views of the desert valley.



Three Bedroom Anantara Family Pool Villa

Three Bedroom Anantara Family Pool Villa

Made with larger families or group of friends in mind and featuring two king and one twin bed rooms, these pool villas offer plenty of outdoor space to enjoy a memorable private barbecue experience, courtesy of our chef and your villa host.

Royal Pavilion Villas

Situated away from the main resort, the palatial Royal Pavilion Villas offer unsurpassed comfort and luxury. With enchanting views across the desert, the luxury experience is complemented by exclusive service from a personal villa host. The Royal Pavilion Villas feature one king-size bedroom with en-suite bathroom, a separate living room and dining area.

The lavish settings extend outdoors, with a private plunge pool and day beds, as well as a dining area that is the perfect setting for intimate dining, prepared by your very own chef.



Royal Pavilion Pool Villa



Three Bedroom Anantara Family Pool Villa - Bathroom

Room Features

King-size or twin bedroom | Flat-screen TV with DVD player | Apple TV & Chromecast | Bathroom with oversized bathtub and rain shower | Free WiFi | Nespresso coffee machine | Pillow menu | Air-conditioning | Mini bar

Villa Features

King-size | Private plunge pool | Patio with dining set and outdoor shower | Sun loungers | Personalised villa host | Kitchenette | Flat-screen TV with DVD player | Apple TV & Chromecast | Bose Bluetooth iPod docking station | Bathroom with oversized bathtub and rain shower | Free WiFi | Nespresso coffee machine | Pillow menu | Media box | Air-conditioning | Mini bar

Guest Services

Library | WiFi | Concierge services | Tours and excursions | Fitness centre | Souk | Laundry, pressing and dry cleaning | Kids’ Club | Rollaway beds and baby cots available | Business services | 24-hour room service

Room Type	No. of Rooms	Room Size SQM	Extra Bed	Max. Room Occupancy
Deluxe Garden	70 (42 king and 28 twin)	40 to 45	No	2
Deluxe Balcony	42 (28 king and 14 twin)	40 to 45	No	2
Deluxe Terrace	28 (28 king)	50	No	3
Anantara Suite	14 (14 king)	106	Yes	3
One Bedroom Villa	29 (One bedroom with one king)	130	Yes	3
Two Bedroom Villa	10 (Two bedrooms with one king and one twin)	190	Yes	5
Three Bedroom Villa	2 (Three bedrooms with two king and one twin)	210	Yes	7
Royal Pavillion Villa	10 (One bedroom with 1 king)	130	No	3

GOURMET FLAVOURS

Rolling dunes, stunning views and gourmet cuisine are always in season at our acclaimed restaurants. Choose from sundowners in the desert, steak feasts, family-friendly dining or a romantic rendezvous for two on the rooftop lounge... the choice is yours.



Al Liwan

Soak up the rich Arabian atmosphere of the resort's iconic lobby lounge. Enjoy a fine snack for lunch, a mint tea in the afternoon or a shisha on the terrace when the sun goes down.

Opening Hours	7.00 am - 1.00 am
Cuisine	Middle Eastern
Seating capacity	13
Dress code	Smart casual



Al Waha

A haven of gastronomic delights. Taste Middle Eastern and international cuisine with a touch of Emirati flair.

Opening Hours	Breakfast	6.30 am - 10.30 am
	Dinner	6.00 pm - 10.30 pm
Cuisine		Middle Eastern/International
Seating capacity		246
Dress code		Smart casual



Ghadeer

Cool down with a refreshing drink as you savour light meals by the pool and fresh fare from the new pizza oven. By night, the restaurant transforms into a romantic retreat, offering a shisha lounge and a menu of local and Mediterranean inspired signature dishes.

Opening Hours	Lunch	12.00 pm - 5.00 pm
	Dinner	7.00 pm - 10.30 pm
Cuisine	Mediterranean	
Seating capacity	110	
Dress code	Smart casual	



Suhail

Sample the finest cuts of meat at this rooftop lounge and grill, including meat from the dry-aging fridge and Josper oven. Enjoy the tranquil atmosphere and sweeping views of the wadi below in cosy armchairs or in air-conditioned comfort indoors.

Opening Hours	Drinks	4.00 pm - 1.00 am
	Dinner	7.00 pm - 10.30 pm
Cuisine	International	
Seating capacity	80	
Dress code	Smart casual	



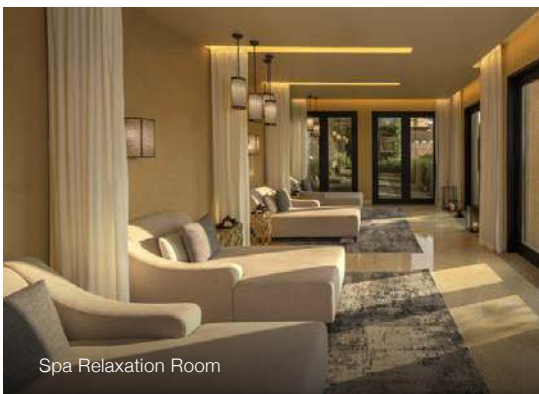
Al Falaj

During the cooler months, Al Falaj offers a Bedouin-style dining experience, complemented by the unique flavours of Middle Eastern cuisine. Immerse yourself in local tradition and relax on Arabic-style seating as you dine to flickering lights of the bonfire. Feast on a BBQ complemented by Bedouin and Oriental dishes, followed by a selection of delicious desserts, exotic, flavourful shisha and hot bread from the traditional Zarb.

Opening Hours	7.00 pm - 10.30 pm (October - April)	
Cuisine	Middle Eastern	
Seating capacity	100	
Dress code	Smart casual	

OASIS OF REJUVENATION

Cocoon yourself in Arabian luxury as you indulge in ancient rituals infused with contemporary practices and indigenous ingredients at the much-lauded Anantara Spa. Choose from an array of wellness experiences, delivered in both private and couple's suites alike, including the Moroccan hammam and desert spa rituals.



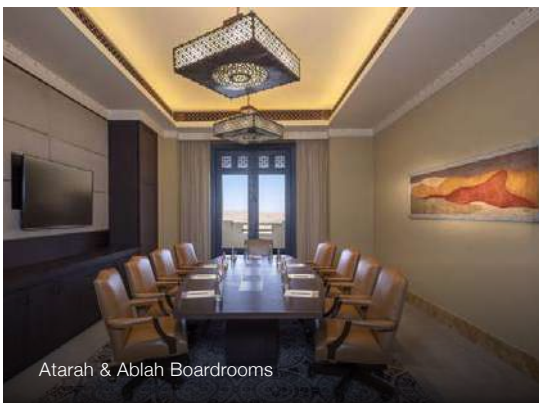
- Variety of massages, body experiences, facials & signature treatments
- Five luxurious treatment suites for individuals & couples
- Moroccan Hammam
- Thai Sala (October to April)
- Relaxation area with amazing views of the desert
- Private male & female changing areas
- Wellness experiences
- Two heated Jacuzzis
- Private yoga classes
- Two steam rooms
- Ice room
- Sauna

FOR EVENTS OF DISTINCTION

From royalty to diplomats, global corporations, boutique firms, brides, grooms and those looking to celebrate, our incredible al fresco spaces and ballroom are truly sought-after.



Liwa Ballroom



Atarah & Ablah Boardrooms

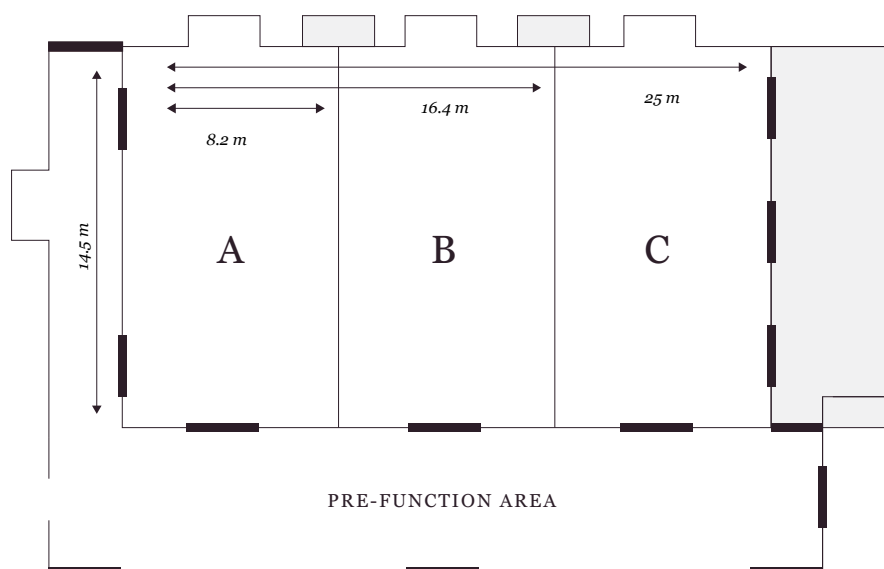
A magical environment for your special celebration or wedding, Liwa Ballroom enjoys a private entrance and terrace as well as new stage, sound system, linens and furniture. Guests also have the choice of several unique al fresco event spaces that are sure to add a touch of Arabian charm to any occasion.

Our executive boardrooms and ballroom also provide corporate guests with formal venues for meetings, seminars and conferences, while enchanting spaces around the resort are ideal for team building and post-event receptions alike.

We have also recently refreshed our multi-purpose outdoor Events Arena with new furniture, traditional tents, generators and storage. This versatile venue may accommodate upto 200 guests and a range of themes as well as types of events.

For the ultimate in grandeur, the Royal Pavilion is the ideal venue for an exclusive and intimate event, ensuring your guests are hosted in regal luxury.

	Theatre	Classroom	Cabaret	Boardroom	U-Shape	Banquet	Reception
Liwa Ballroom	300	180	108	-	64	200	350
Liwa Ballroom A	72	36	30	30	25	50	100
Liwa Ballroom B	72	36	30	30	25	50	100
Liwa Ballroom C	72	36	30	30	25	50	100
Liwa Ballroom A+B	154	70	66	-	45	120	250
Liwa Ballroom B+C	-	-	-	-	-	120	250
Antarah Boardroom	-	-	-	10	-	-	-
Ablah Boardroom	-	-	-	10	-	-	-



	Floor ^M	Total Area ^{SQM}	Ceiling Height ^M	Width of Door ^M
Liwa Ballroom	25 x 14.5	362.5	5.3	1.90
Liwa Ballroom A	8.2 x 14.5	118.9	5.3	1.90
Liwa Ballroom B	8.2 x 14.5	118.9	5.3	1.90
Liwa Ballroom C	8.2 x 14.5	118.9	5.3	1.90
Antarah Boardroom	4.6 x 6.5	29.9	5.3	1.90
Ablah Boardroom	4.6 x 6.5	29.9	5.3	1.90
Pre-Function Area	5.75 x 31	178	4	1.90
Liwa Terrace	18.25 x 5.8	107	-	-

CAPTIVATING EXPERIENCES

Elevate your stay at the resort with indulgent experiences that are sure to enthrall epicureans, adventure-seekers and culture aficionados alike. This year, we are also pleased to offer guests a revitalised and expanded activities portfolio.



Dining by Design

Dining by Design

Intimate and curated dining experience at exclusive locations around the resort.

Spice Spoons

Learn the culinary secrets of the Middle East at a masterclass led by one of our chefs.

Desert BBQ

Gaze at the inky blue, star-studded sky and lose yourself in the magical tranquility of the Rub Al Khali desert as you recline on traditional Majlis seating and enjoy a banquet courtesy of your private chef and butler.

Starting from AED 1,275 per person

In-Villa BBQ

Savour fiery barbecue aromas with an intimate dining experience from the comfort of your villa and prepared by a personal chef.

Bedouin Camp Experience

Feel the sands of time flow through your fingers, as you and your guests indulge in an evening under the infinite desert sky at Camp Nujum, Camp of the Stars.



Spice Spoons



Recreational Activities

Anantara Spa
Free-form swimming pool
Tennis
Fitness centre
Kids' Club
Library
Museum Tour

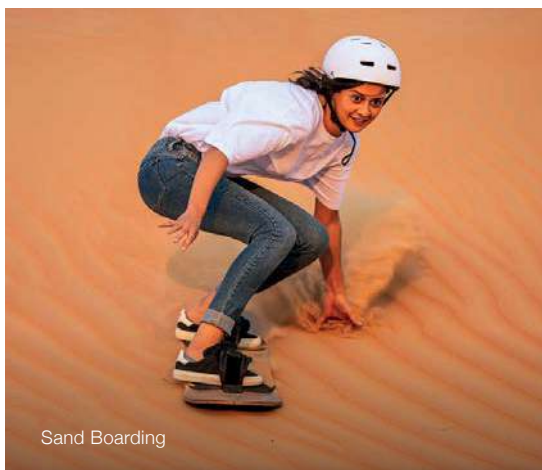
Local Area Recreational Activities

Camel Trekking
Desert Walks
Archery
Dune Bashing
Desert Safari
Desert Yoga
Fat Biking
Sand Boarding
Sand Sledding
Night Drive
Animal Experience
Night Discovery



Available only during the cooler months,
from October to May:

Horse Riding | Falcon and Saluki Dog Show



Contact

Qasr Al Sarab Desert Resort by Anantara
P.O. Box 131277, 1 Qasr Al Sarab Road
+971 2 886 2088

GETTING THERE FROM ABU DHABI

203 Km | 2 Hr 8 Min



anantara.com/en/qasr-al-sarab-abu-dhabi