



ANANTARA  
ULUWATU • BALI  
RESORT

## CLIFF SIDE HIDEAWAY, REVEALING ENDLESS OCEAN VIEWS.

Discover another side to the island of Bali, where crashing waves meet clifftop luxury in signature Anantara style. A boutique setting of only 73 suites, pool villas and penthouses ensures privacy and romance. Slow down, unwind, and take in the most stunning of sunsets over the Indian Ocean.

Opening Date:	2013
Address:	Jl. Pemutih, Labuan Sait, Uluwatu, Bali 80361, Indonesia
Telephone:	+62 361 895 7555
Facsimile:	+62 361 895 7600
Email:	<a href="mailto:uluwatu@anantara.com">uluwatu@anantara.com</a>
Web Address:	<a href="http://bali-uluwatu.anantara.com">bali-uluwatu.anantara.com</a>



## LOCATION

Anantara Uluwatu Bali Resort is a 40-minute drive from Ngurah Rai International Airport. The famous Uluwatu Temple is just down the coast, as well as world-class golf courses and some of the island's most stunning beaches such as Bingin and Padang Padang.

Management: Anantara Hotels, Resorts & Spas



## ACCOMMODATION

The resort's suites, villas and penthouses are designed in contemporary Balinese style, cascading down the cliffside with ocean views. Living spaces abound both indoors and out, whether a balcony with Jacuzzi, private courtyard, or cantilevered pool stretching out to the horizon.

### Anantara Pool Suites

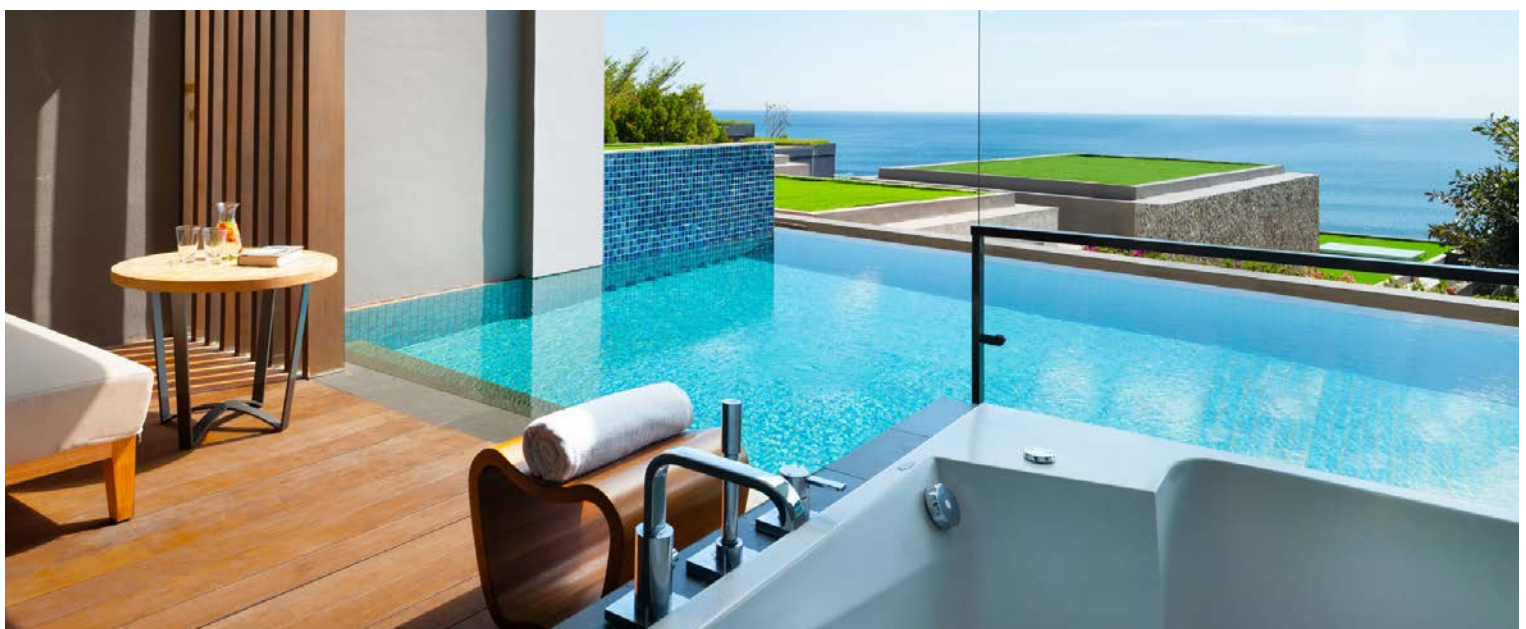
Ensnored by lush and exotic foliage, Anantara Pool Suites offer the height of privacy. Snuggle up with a loved one on the king bed, in the spacious living area, or out on your balcony fronted by shimmering infinity pool. Then take in Bali's world-renowned sunsets from the warmth of your oversized Jacuzzi.

### Ocean View and Ocean Front Suites

Our suites are spacious, elegant, and boast floor-to-ceiling views. Relax indoors with an espresso and Bose surround sound, or soak in the balcony Jacuzzi overlooking the ocean.

### Ocean View and Ocean Front Pool Suites

The pool suites line the front of the main resort building and at the cliffside, with direct access to a suites-only swimming pool. Enjoy total seclusion of the magnificent view in an ocean suite from your al fresco Jacuzzi.





## Two and Three Bedroom Garden Pool Villas

Garden villas are perfect for families, with a pool and sundeck surrounded by lush foliage. Ensuite bedrooms open onto a spacious living and dining room with kitchenette. Share meals together indoors or out in your pavilion by the pool.

## Two and Three Bedroom Ocean View Pool Villas

Ocean view pool villas are staggered down the cliffside in a dramatic fashion. Glass windows and walls highlight the beauty of the Indian Ocean. Cross the bridge to your private dining platform, toasting the sunset with Champagne.

## Three Bedroom Ocean Front Pool Villa

Anantara Uluwatu's Ocean Front Pool Villas occupy a prime niche of our cliff-side setting, right at the edge overlooking the sea. Complete with a private plunge pool, sun deck and garden, these expansive villas consist of three bedroom villas are perfect for your families or friends travelling together. In keeping with the resort's focus on designer style that brings nature lights, along with stunning views.



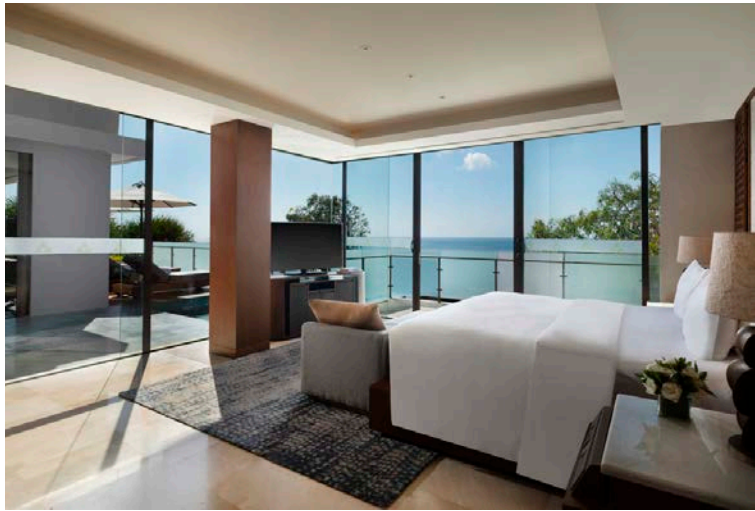
## Dedari Penthouse

The one-bedroom Dedari Penthouse offers 180° ocean views framed in stunning contemporary style. The open-plan living and dining room is opulent with original artworks. Drift outside to the deck for Jacuzzi relaxation and dining in your private dining area.



## Dewata Penthouse

Our most luxurious penthouse is spread over two floors, with two ensuite bedrooms on the lower floor. Both floors boast panoramic ocean views and plush living spaces. Lounge in the sun with a private pool that stretches towards the horizon.



## ROOMS FEATURES

- Complimentary WiFi
- Flat-screen TV and Bose sound system with Bluetooth connection
- Minibar and espresso machine
- Double rain shower
- Suites: balcony Jacuzzi
- Villas: private pool

## GUEST SERVICES

- In-room dining
- Laundry and pressing service
- Concierge
- Shuttles to area beaches and attractions



ROOM TYPE	TOTAL ROOM	SIZE (sqm)	MAX ADULTS
Ocean View Suite	31	84	3
Anantara Pool Suite	3	100	3
Ocean View Pool Suite	7	100	3
Ocean Front Suites	14	84	3
Ocean Front Pool Suites	6	100	3
2 Bedroom Garden View Pool Villas	1	423	4
3 Bedroom Garden View Pool Villas	3	577	6
2 Bedroom Ocean View Pool Villas	2	296	4
3 Bedroom Ocean View Pool Villas	2	330	6
3 Bedroom Ocean Front Pool Villas	2	330	6
Dedari Penthouse	1	179	3
Dewata Penthouse	1	202	4
TOTAL ROOM	73		



## DINING



### 360 Rooftop

Discover unique renditions from Western, Asian, Indonesian and Balinese cuisines with stunning ocean views. The daily breakfast buffet bustles with local and international favourites. Lunch is light, afternoon tea decadent, and evenings elegant looking over the night sky.

Opening hours: Breakfast: 7.00 am – 10.30 am  
Lunch: 12.00 am – 5.00 pm  
Dinner: 6.00 pm – 11.00 pm

Cuisine: Asian and Western with Indonesian specialities

Seating capacity: 100

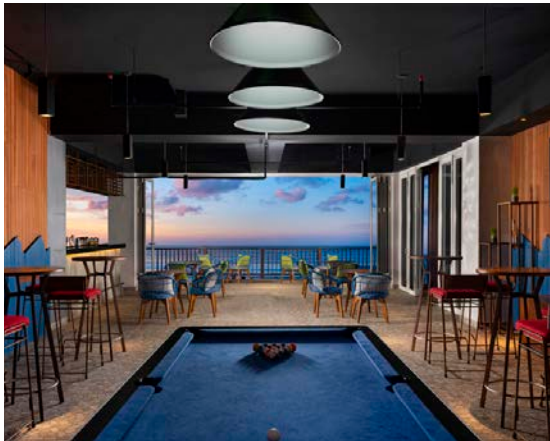




## SONO Teppanyaki

Savour the best of contemporary Japanese cuisine with the interactive edge of live cooking shows. A dramatic backdrop of the sun setting over rushing surf sets the scene for vibrant evenings, as you dine on fusion grill highlights crafted by our master chef.

Opening hours: 6.00 pm – 11.00 pm  
 Cuisine: Contemporary Japanese  
 Seating capacity: 15 seats with 2 seating times



## Botol Biru Bar and Grill

Botol Biru serves up coastal cuisines from the Indian Ocean to the Mediterranean. Enjoy exquisitely created dishes from both land and sea. The bar lights up at sunset perched at cliff's edge, the perfect setting for original cocktail creations.

Opening hours: 11.00 am – 10.00 pm  
 Cuisine: Coastal  
 Seating capacity: 50



## Dining by Design

Anantara's signature private dining experience offers extraordinary al fresco settings to choose from. Dine on a clifftop or on a pool island under a frangipani tree. Your choice of cuisine is prepared by your personal chef and served by your butler.

Hours: Upon request  
 Cuisine: International  
 Capacity: Private dining



## Spice Spoons Cooking Class

Step behind the scenes of Indonesia's culinary culture, with the option of a local market tour. Don your chef hat and apron for a step-by-step cooking class by a master chef. Learn how to create authentic recipes and savour your dishes for lunch.

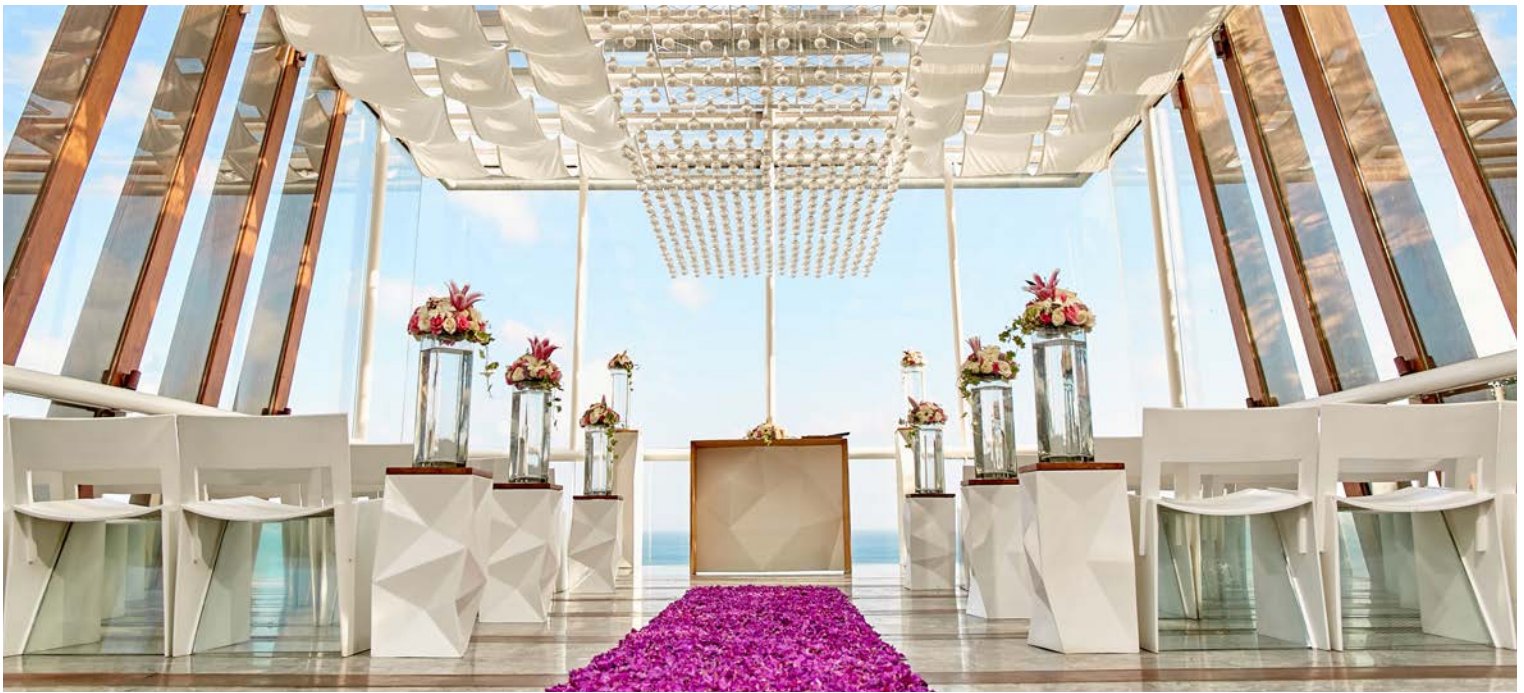
Hours: Upon request  
 Cuisine: Indonesian



## ACTIVITIES

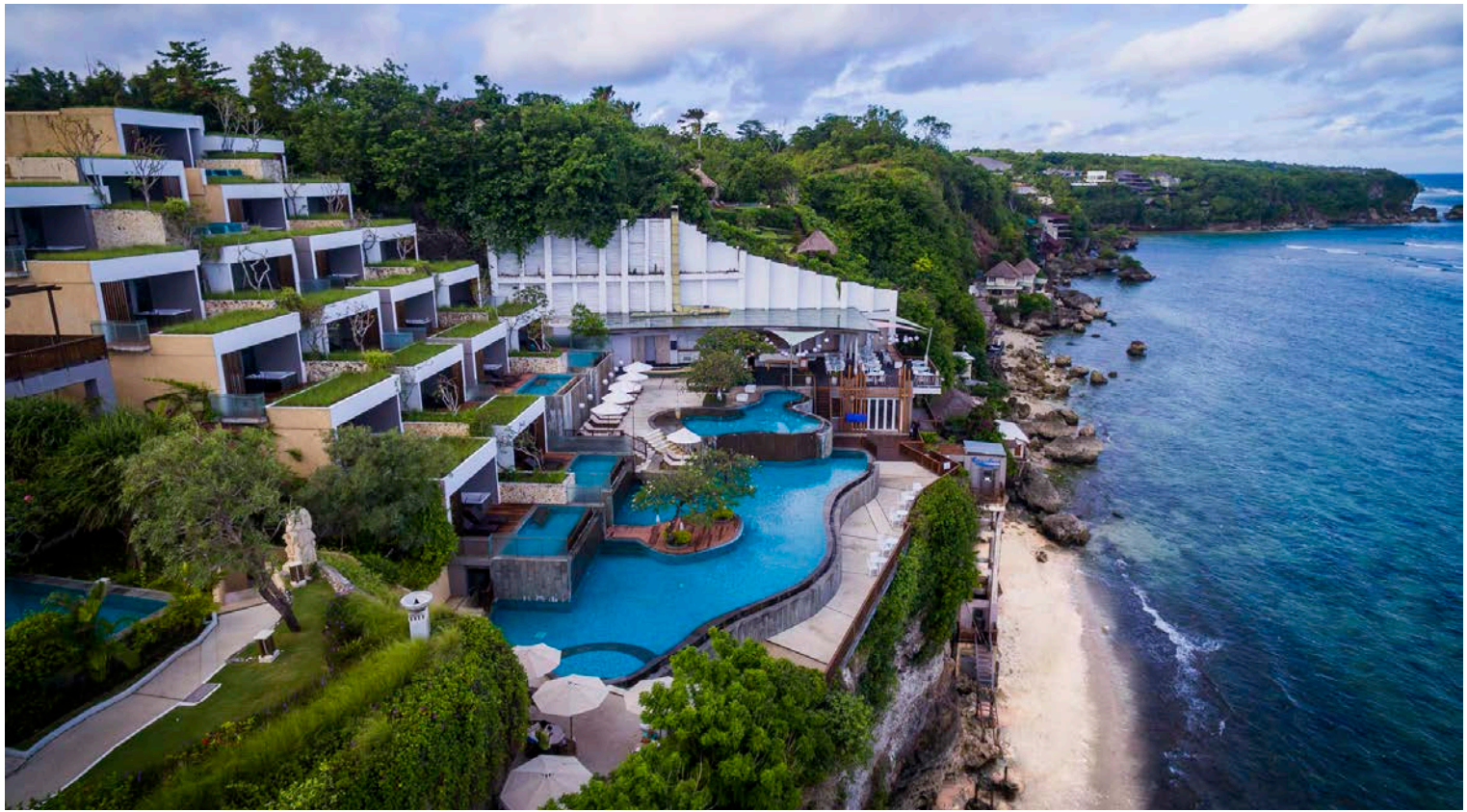
At Anantara we invite guests do it all or nothing at all and perhaps discover a new passion.

- Infinity pool
- Fitness centre
- Surfing at Impossible Beach
- Yoga
- Mini theatre
- Daily cultural classes: Balinese dance, Bali boreh making, batik painting, ceramics making and Balinese offering making



## DREAM CELEBRATIONS

Sheer cliffs rising up out of azure waters, the lull of waves lapping at the base. The hypnotic rhythm of Balinese gamelan, ocean spray and the light scent of incense. From traditional to contemporary, Anantara Bali Uluwatu Resort is a one-stop wedding paradise offering an array of stunning venues. Say 'I do' in the Dewa Dewi chapel or the Viewpoint, then celebrate with cocktails on the lawn and a banquet on the rooftop.



## MEETINGS & EVENTS

Our stylish rooftop venue is perfect for board meetings, seminars and cocktail gatherings. Modern technology includes high-speed WiFi and a full suite of audiovisual equipment.

Venue	Area		Dimension (WxL)		Height								
	sqm	sq ft	Metres	Feet	Metres	Feet							
Bali Biru (6 <sup>th</sup> Fl)	108,56	356,08	(6,6x7,2) +(5,7x10,8)	(21,65x1,22) +(18,7x35,42)	2,45	8,04	60	24	15	16	50	50	18



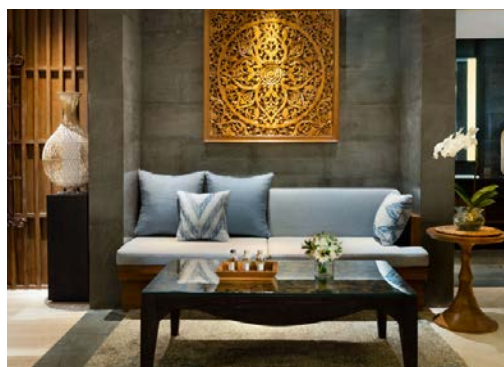
## ANANTARA SPA

Designed to reflect a traditional Balinese rice barn, Anantara Spa is an evocative sanctuary for the senses. Find rejuvenation with treatments inspired by Indonesia's Spice Islands, ancient wellness secrets from across Asia and advanced Western practices. Let the expert care of highly trained therapists coax you into deep relaxation and holistic wellbeing.

### Spa Facilities:

- One couple's treatment suite
- Two couple's treatment rooms
- Four single treatment rooms
- Nail and hair salon
- Spa & sauna

Opening hours: 9.00 am – 9.00 pm





## LOCAL AREA EXCURSIONS

Every day, Anantara Uluwatu features a range of organised and DIY excursions that let you immerse in Bali's timeless culture and beauty.

- Uluwatu Temple with Kecak fire dance
- Padang Padang Beach
- Ubud
- Golfing
- Sailing

## AIRPORT TRANSPORTATION

Bali's Ngurah Rai International Airport offers direct or connecting services to destinations all over the world. Domestic airlines link Bali to Indonesia's major cities, including the capital Jakarta. Ngurah Rai International Airport is located in Bali's capital, Denpasar, approximately 20 km from the resort. Pre-paid public taxis are available from clearly marked counters after exiting immigration and customs. Alternatively, arrive in style with Anantara's limousine service. For further information or reservations, please email [uluwatu@anantara.com](mailto:uluwatu@anantara.com) in advance.

**Voltage:** 220 - 240AC, 50 Hertz

**Currency:** Indonesian Rupiah (IDR)

**Time Zone:** GMT +8 hours (Singapore, Hong Kong, Malaysia, Beijing)

**Climate:** Bali enjoys a year-round tropical climate with temperatures ranging between 27°C and 33°C. Two seasons are experienced: intermittent rain showers between October and April are followed by the sunny season from May to September.