

Unique events infused with Irish charm in the heart of Dublin




ANANTARA
THE MARKER DUBLIN
HOTEL

Urban luxury meets classic charm

One of Dublin's most visually striking architectural landmarks, Anantara The Marker Dublin Hotel offers a distinct blend of luxury, hospitality and style. A warm welcome to an elegant urban retreat awaits those who crave the unconventional, yet expect the exceptional standards of service for which The Leading Hotels of the World™ are renowned.

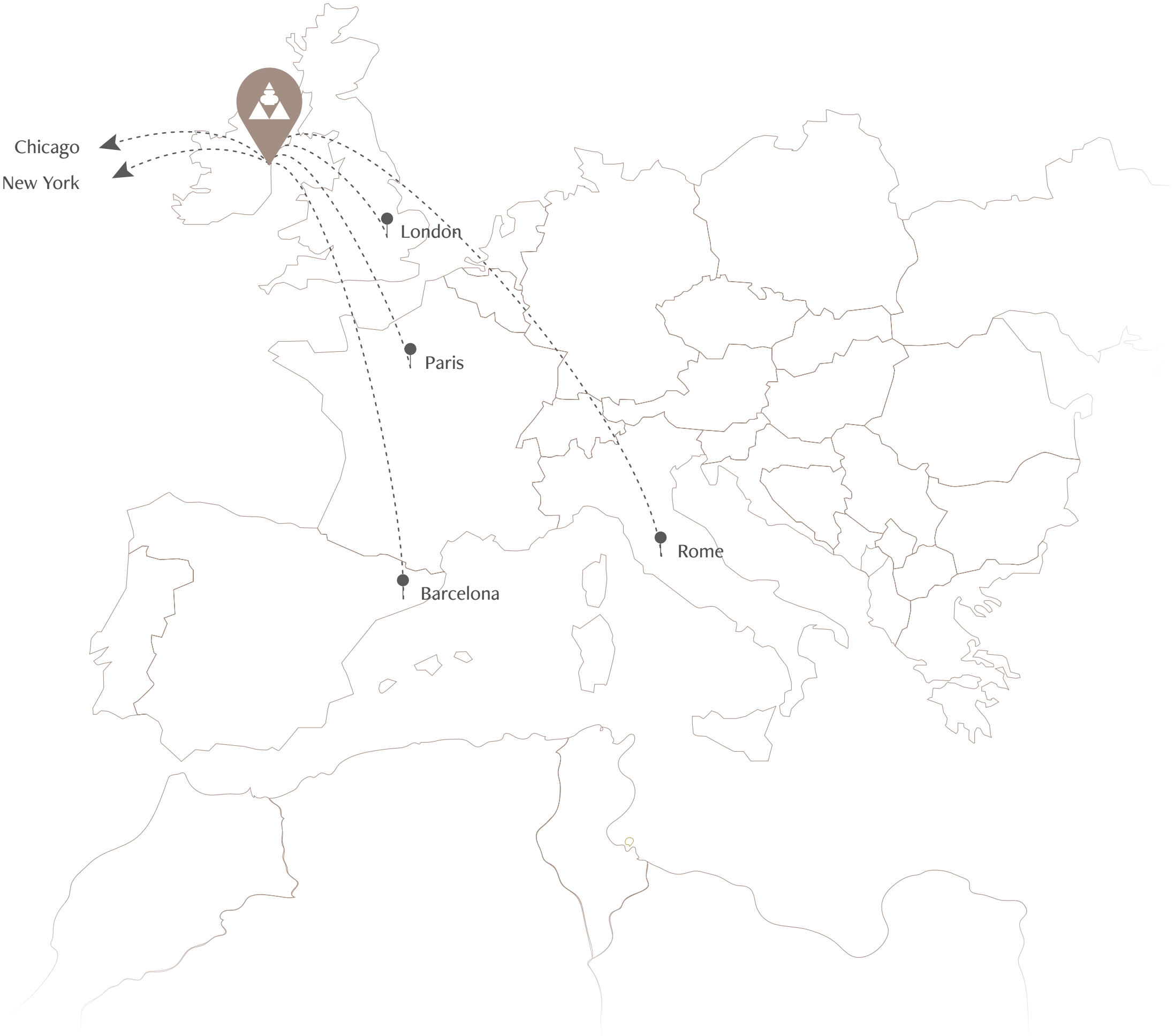
Located in the heart of the Docklands, Dublin's most iconic cultural hub, Anantara The Marker is the ideal venue for meetings, business conferences, stylish events, weddings and special occasions.

Elegance and class in a futuristic setting

Anantara The Marker offers contemporary urban luxury overlooking the waterfront in Grand Canal Square. Ideally located in the city's modernised Docklands, the hotel captures the unique mix of vibrant charm and rich culture that exemplifies the spirit of modern Dublin.

International travel map

City	Flights per week	Travel time
London - UK	15	1 H 25
Paris - France	7	2 H
Barcelona - Spain	7	2 H 30
Rome - Italy	5	3 H 15
New York - USA	12	7 H 30
Chicago - USA	5	8 H 25



Local travel map

Ireland offers something for everyone, from stunning scenery and rich history to vibrant nightlife and delicious cuisine. Irish cities welcome visitors with unique charm and memories that last.

Dublin is a bustling cultural metropolis; Cork is rich with heritage; and on the west coast, Galway is known for its stunning surroundings and fascinating history.



MAIN TRANSFER VENUES

- 1 - Belfast - 168 km
- 2 - Cork - 257 km
- 3 - Galway - 209 km
- 4 - Waterford - 207 km

Venue	Means of transport	Trip length
1	car	2 H
2	car	3 H
3	car	2 H 30
4	car	2 H 30

Places of interest



A unique retreat from every angle

The architecture and design of Anantara The Marker draws on elements of the Irish landscape combined with a sleek urban aesthetic.

Inspiration comes from the geometric shapes that exist naturally on the Irish island, from the rugged Burren landscape to the unique hexagonal stones of the Giant's Causeway. This elemental style is carried through from the stunning ground floor bar and restaurant, to the unique geometric layouts of our 187 guestrooms and suites, and to the striking rooftop bar, where the views reach across the cityscape to the wild natural beauty of the mountains and the Irish Sea.

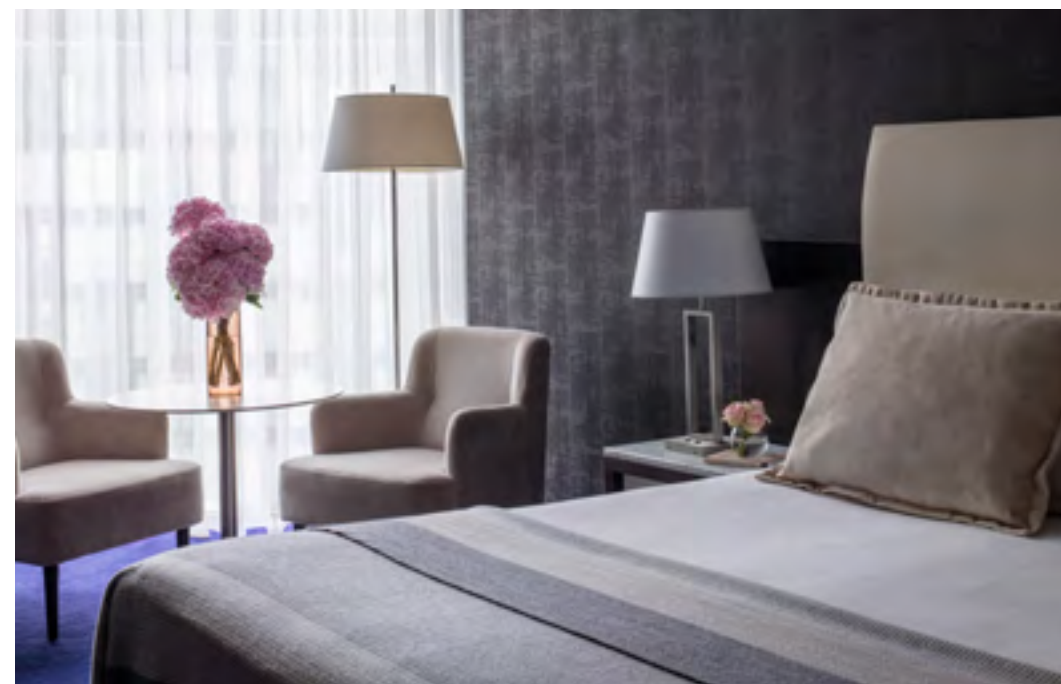


The Marker Bar & Lounge

Accommodation

Bathed in natural light, the spacious stylish and comfortable rooms and suites at Anantara The Marker set a new standard in city living. With high-tech amenities, many feature striking views over Grand Canal Square and the Docklands.

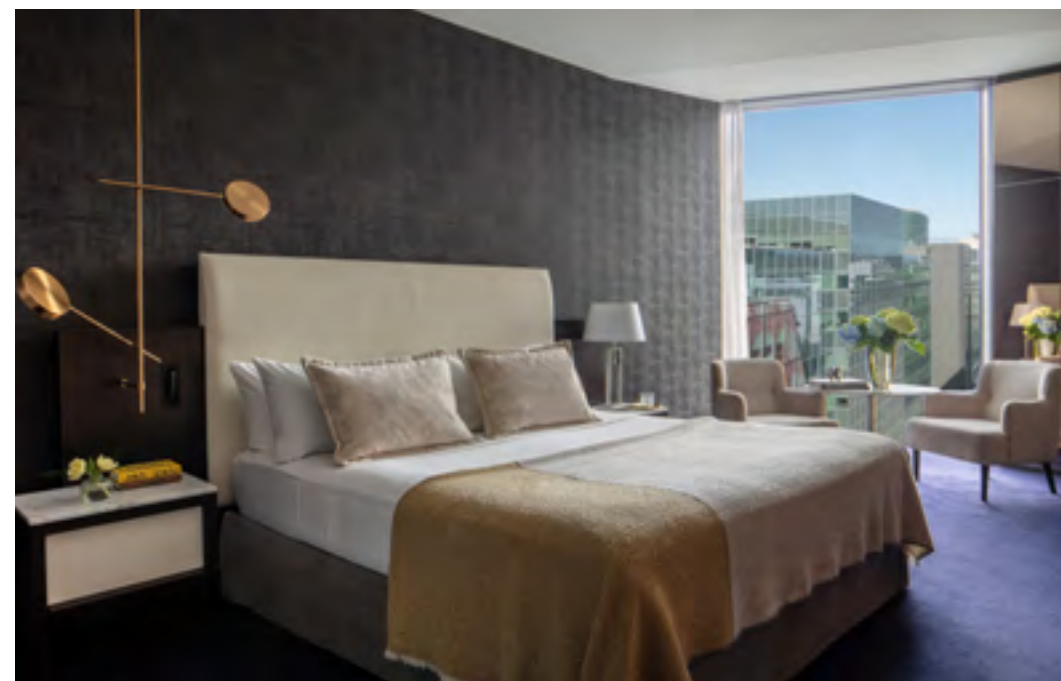
Premium Grand Canal View Room



DELUXE ROOM

30 sqm / 323 sqft
Maximum occupancy: 2 adults
Total number of rooms: 42

- High-tech amenities
- Luxury marble bathroom
- Connecting rooms available



PREMIUM ROOM

33 sqm / 355 sqft
Maximum occupancy: 2 adults
Total number of rooms: 73

- High-tech amenities
- Luxury marble bathroom
- Modern and elegant room design
- Connecting rooms available



PREMIUM ROOM VIEW

35 sqm / 377 sqft
Maximum occupancy: 2 adults & 1 child
Total number of rooms: 43

- High-tech amenities
- Luxury marble bathroom
- Bord Gáis Energy Theatre view



PREMIUM GRAND CANAL VIEW ROOM

35 sqm / 377 sqft

Maximum occupancy: 2 adults & 1 child

Total number of rooms: 8

- Grand Canal Square, waterfront & Dublin mountains view
- High-tech amenities
- Luxury marble bathroom



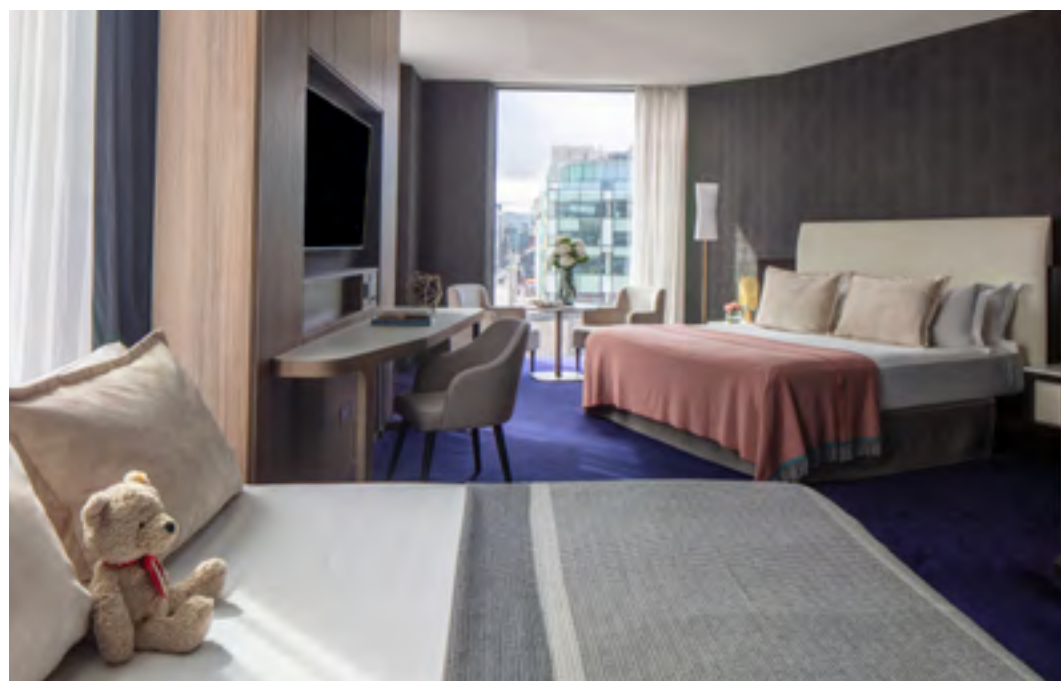
FAMILY ROOM

40 sqm / 430 sqft

Maximum occupancy: 2 adults & 2 children

Total number of rooms: 4

- Teepee, games and treats for children
- Spacious & light



FAMILY ROOM WITH VIEW

43 sqm / 463 sqft

Maximum occupancy: 2 adults & 2 children

Total number of rooms: 2

- Teepee, games and treats for children
- Spacious & light
- Grand Canal Square & waterfront view





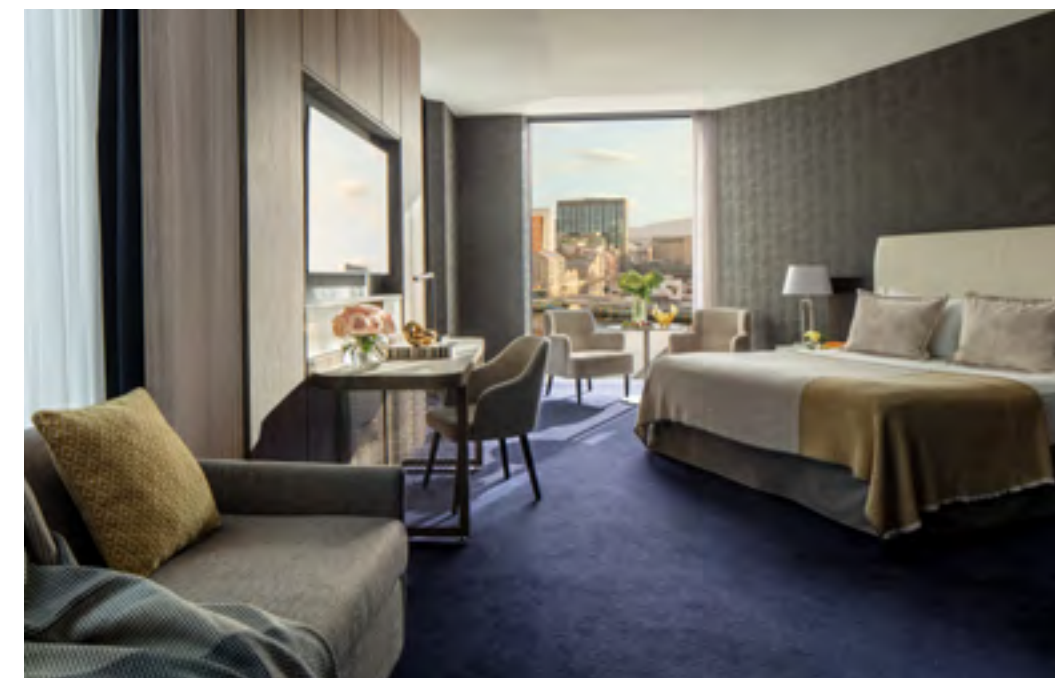
JUNIOR CORNER SUITE

40 sqm / 430 sqft

Maximum occupancy: 3 adults

Total number of suites: 14

- High-tech amenities
- Luxury marble bathroom



JUNIOR CORNER SUITE WITH VIEW

43 sqm / 463 sqft

Maximum occupancy: 3 adults

Total number of suites: 2

- High-tech amenities
- Luxury marble bathroom
- Grand Canal Square, waterfront & Dublin mountain views
- Convertible sofa



THE ROCHE

85 sqm / 915 sqft

Maximum occupancy: 3 adults

Total number of suites: 1

- Luxury suite
- Separate living and dining room
- View of the Convention Centre, River Liffey and Chimney Park



THE SCHWARTZ

92 sqm / 990 sqft

Maximum occupancy: 3 adults

Total number of suites: 1

- Luxury suite
- Separate living and dining room
- View of Grand Canal Square and Dublin mountains



PRESIDENTIAL SUITE VIEW

129 sqm / 1,388 sqft

Maximum occupancy: 4 adults

Total number of suites: 1

- Luxury suite with two ensuite bedrooms
- Separate living and dining room
- Waterfront view of Grand Canal Square and Dublin mountains



Venues

Come together at a refined urban retreat, where sleek modern design inspires creativity and innovation. With state-of-the-art amenities, upscale dining options, top-notch service and luxurious accommodations, Anantara The Marker is the perfect setting to elevate your business or celebrate a special occasion.


ANANTARA
THE MARKER · DUBLIN
HOTEL


ANANTARA
THE MARKER · DUBLIN
HOTEL

Conference & meeting facilities

With capacities ranging from 10 to 350 people, Anantara The Marker offers nine exceptional venues perfect for small-to-large-scale meetings, events and conferences.

The state-of-the-art, versatile spaces are visually impressive and include video conferencing, multi-media equipment, LCD displays, WiFi and air-conditioning.

Most boast natural daylight and views of Chimney Park, an iconic landmark and a surprising hidden treasure, tucked into the contrasting urban landscape. Three of the spaces have direct own-door access to Chimney Park, creating even more flexibility.

Meeting room	Area (M²)	Area (sqft)	Dimensions (in M LxWxH)	Banquet	Board room	Class room	Cocktail	U-Shape	Theatre	Cabaret	Daylight
The Marker One	177	1,905	12 x 14 x 4.7	110	34	102	190	43	150	80	NO
The Marker Two	177	1,905	12 x 14 x 4.7	110	34	88	160	43	130	70	NO
combined	354	3,810	12 x 28 x 4.7	240	68	180	350	86	300	170	NO
The Carnac	30	320	5.4 x 5.5 x 2.7	10	12	15	23	12	23	8	YES
The Hamilton	27	296	5.4 x 5.1 x 2.7	10	10	6	-	10	16	8	NO
combined	57	616	5.4 x 10.6 x 2.7	24	24	22	58	22	42	21	YES
The Omer	48	519	4.9 x 9.8 x 2.7	10	8	8	23	10	25	8	YES
The Broadstone	26	282	4.9 x 5.3 x 2.7	10	10	8	-	10	16	8	NO
combined	74	802	4.9 x 15.2 x 2.7	30	26	26	51	14	51	24	YES
The Hibernia	44	474	4.3 x 10.1 x 2.7	30	26	22	42	-	42	21	YES
The Aqueduct	17	189	4.3 x 4.1 x 2.7	10	8	-	-	-	12	7	NO
combined	61	657	4.3 x 14.2 x 2.7	32	28	30	72	-	72	28	YES
The Shannon	94	1,011	6.5 x 14.5 x 2.7	60	32	55	100	36	110	47	YES



The Marker

The Marker Suite has a striking floating ceiling, with no columns to obstruct the natural flow of the room. High-tech audiovisual equipment is built in, with the option of a stage or podium for events.

354 sqm / 3,810 sqft

Size (LxWxH ft) 129 x 301 x 51

Size (LxWxH m) 12 x 28 x 4.7

Up to 350 guests

Theatre	300 guests
Classroom	180 guests
U-shape	86 guests
Boardroom	68 guests
Cabaret	170 guests
Cocktail	350 guests
Banquet	240 guests

The Marker I

One half of the complete Marker Suite, Marker I features its own separate entrance. The expansive layout is ideal for conferences, workshops and cocktail receptions.

177 sqm / 1,905 sqft
Size (LxWxH ft) 129 x 151 x 51
Size (LxWxH m) 12 x 14 x 4.7

Up to 190 guests

Theatre	150 guests
Classroom	102 guests
U-shape	43 guests
Boardroom	34 guests
Cabaret	80 guests
Cocktail	190 guests
Banquet	110 guests





The Marker II

At 1,905 sqft, Marker II is the perfect setting for breakout sessions, workshops, seminars and coffee breaks.

177 sqm / 1,905 sqft

Size (LxWxH ft) 129 x 151 x 51

Size (LxWxH m) 12 x 14 x 4.7

Up to 160 guests

Theatre	130 guests
Classroom	88 guests
U-shape	43 guests
Boardroom	34 guests
Cabaret	70 guests
Cocktail	160 guests
Banquet	110 guests

The Carnac & The Hamilton

The Carnac is an ode to one of the Dockland’s many bridges, whilst The Hamilton is named in memory of Irish mathematician Sir William Rown Hamilton, who realised the formula for quaternions while taking a stroll along the Royal Canal. Seamlessly connected, these meeting rooms are located next to the business centre and can be used for post-conference cocktails.

57 sqm / 616 sqft

Size (LxWxH ft) 58 x 114 x 29

Size (LxWxH m) 5.4 x 10.6 x 2.7

Up to 58 guests

Theatre	42 guests
Classroom	22 guests
U-shape	22 guests
Boardroom	24 guests
Cocktail	58 guests
Banquet	24 guests





The Omer & The Broadstone

The Omer was named after Thomas Omer, one of the originators of the Grand Canal project, while The Broadstone was named after a major transport hub, a legacy of Dublin's trading history. With the capacity for over 50 guests in a range of configurations when combined, these meeting rooms enjoy natural light and feature corners ideal for refreshments.

74 sqm / 802 sqft

Size (LxWxH ft) 52 x 58 x 29

Size (LxWxH m) 4.9 x 15.2 x 2.7

Up to 51 guests

Theatre	51 guests
Classroom	26 guests
U-shape	16 guests
Boardroom	26 guests
Cocktail	51 guests
Banquet	24 guests

The Hibernia & The Aqueduct

The Hibernia was named after one of Ireland's great 19th-Century steamships. Dublin's Foster Aqueduct was a feat of genius by the Royal Canal engineers.

With natural light and a full suite of audiovisual equipment, these versatile venues are suitable for a range of small gatherings to inspire creativity. Combined, they create an expansive space that transforms from a boardroom to relaxing bar.

61 sqm / 663 sqft

Size (LxWxH ft) 46 x 153 x 29

Size (LxWxH m) 4.3 x 14.2 x 2.7

Up to 72 guests

Theatre	72 guests
Classroom	30 guests
Boardroom	28 guests
Cocktail	72 guests
Banquet	32 guests





The Shannon

Named after Ireland's longest river, The Shannon is uniquely stunning, with a forest mural by Irish artist Enda Cavanagh highlighted by natural sunlight.

94 sqm / 1,011 sqft

Size (LxWxH ft) 70 x 156 x 29

Size (LxWxH m) 6.5 x 14.5 x 2.7

Up to 110 guests

Theatre	110 guests
Classroom	55 guests
U-shape	36 guests
Boardroom	32 guests
Cocktail	100 guests
Banquet	60 guests

Gastronomy

A culinary journey celebrating the essence of Irish cuisine awaits. Executive Chef Gareth Mullins and his team invite guests to explore a world of refined flavours and unique dining experiences paired with warm Irish hospitality.

Breakfast Buffet



THE MARKER BAR & LOUNGE

The Marker Bar & Lounge exudes its own unique style and ambience. Modern, fresh, and laid back, it draws an eclectic mix of people through its doors. The bar buzzes from morning till night – a place for work and an espresso, a light lunch or dinner and drinks. When the markers illuminate, indulge in a delectable dinner with our eclectic selection of modern fare and sip on curated cocktails.

- Opening hours: 9:00 am – 11:00 pm
- Kitchen: 12:00 pm – 8:00 pm



THE ROOFTOP BAR & TERRACE

The rooftop flows from indoors to out, blending intimate and social areas. Panoramic 360-degree views reach the mountains on one side and the Irish Sea on the other. Relaxed alfresco dining picks up pace at sunset when stylish urbanites ascend to connect over cocktails and sharing platters.

- Cuisine: Drinks & light bites
- Seating capacity: 120 guests



FORBES STREET BY GARETH MULLINS

One of Dublin’s most exciting restaurants, Forbes Street by Gareth Mullins is an expression of all that’s brilliant in Ireland’s eclectic capital city. With an ever-evolving menu showcasing the best local produce from land and sea, each dish tells a story. An open kitchen, extensive wine selection and intimate booths set the scene for a culinary experience like no other.

- Opening hours: Tuesday – Saturday 5:00 pm – 10:00 pm
- Seating capacity: 110 guests



IN-ROOM DINING

Offering gourmet flavours at any time of the day or night, the in-room dining menu satisfies every craving. From breakfast in bed to healthy snacks or a leisurely dinner, guests will find something delicious 24/7.

- Opening hours: 24/7



Banqueting services

Tailored to the very last detail

Renowned for creating the most unique culinary journeys, Anantara The Marker sets the scene for elegant feasts of flavours and possibilities.

Magnificent venues pair perfectly with tailored banqueting services that cater to both corporate events and social celebrations. A combination of authentic local flavours, refined ingredients, diverse menus and curated solutions crafted by our experienced chefs ensures every gastronomic experience leaves an impression on your guests.

Delectable coffee breaks and brunches designed for productive meetings; world-class à la carte menus and buffet banquets with live cooking stations for large-scale gatherings; contemporary mixology or classic Champagne cocktails for elegant receptions – every occasion is crafted by an experienced team to the very last detail, with the luxurious flair and dedicated service for which Anantara is known.

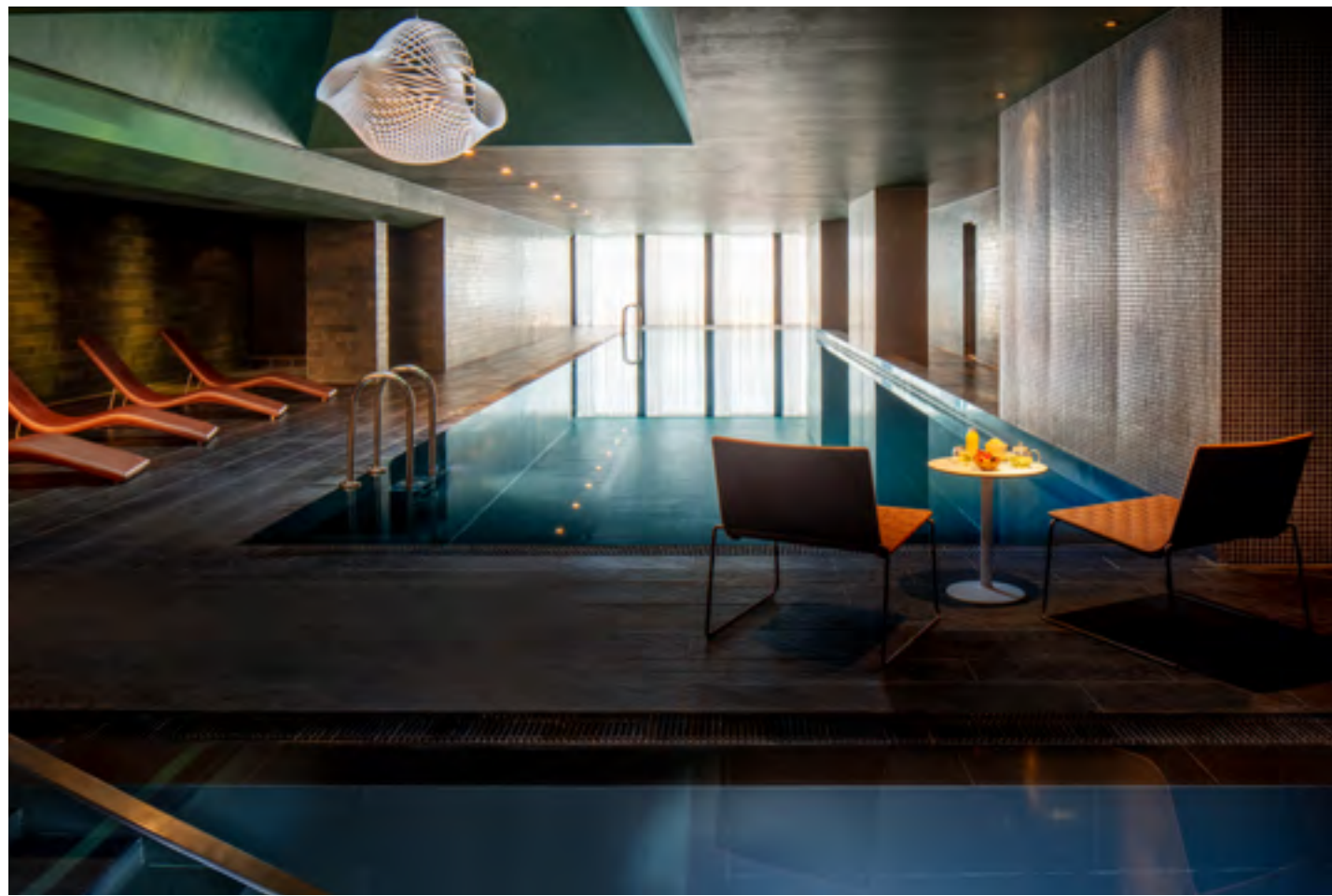
Social events

The sophisticated settings of Anantara The Marker bring people together for memorable gatherings. Elegant cocktail receptions to formal galas, these spaces offer the ideal backdrop for any occasion. With exceptional service, upscale catering and stunning decor, your event is sure to leave an impression.

Anantara experiences

Anantara The Marker Dublin presents a range of authentic experiences designed to connect guests to the Irish capital. Whether through authentic local flavours or unique wellness journeys, passionate experts lead guests to immerse in Ireland's vibrant culture and hospitality.





WELLNESS WONDERS

A haven of wellbeing in the heart of the city, Anantara Spa features five treatment rooms and a range of therapies and massages based on the five elements. Spa guests enjoy access to an indoor pool, sauna, eucalyptus-infused steam room, Jacuzzi and fitness centre with Technogym equipment.



SPICE SPOONS

Anantara's signature cooking class begins in the charming fishing village of Howth, where the ancient art of salmon smoking is revealed. Guests discover culinary secrets with our Executive Chef against the breathtaking backdrop of North Dublin.



CRAFTING AN IRISH COFFEE

Savour Ireland's rich flavours and history, as you uncover the art of crafting an Irish coffee with a coffee master and mixologist. In this immersive experience, the secrets of an iconic drink are unveiled, leaving you with a taste of true Irish craftsmanship to take home.

World-class expertise ensures success

Anantara Hotels & Resorts offers dedicated planners for one-to-one personalised treatment and consistent support.

Our professional teams onsite ensure guest comfort and the flexibility to adapt to individual preferences so that every event is tailored to taste. Guests experience Anantara's commitment to unparalleled service through personalised attention from the moment of reservation to their departure.



Tailor-made offerings

Flexibility

Venues adapt to the unique needs and preferences of the event, offering customisable packages and flexible policies.

Customised packages

Hotels offer options for accommodation, dining, and amenities, allowing meeting planners to curate a selection tailored to their needs.

Industry experts

Differentiated packages are offered for specific industries, from automotive to entertainment, with custom-made solutions and a team of experts.

Customised group website

A dedicated website can be crafted for hosts to share details with guests and allow them to book their accommodation directly.

Global commitment

Anantara Hotels & Resorts is constantly reinforcing its commitment towards environmental, social and cultural conservation. To accomplish this, Anantara has established in-depth policies, procedures and initiatives with respect to:

People	Governance	Value Chain	Shared Value	Planet
Encourage sustainable work ethics and human capital development.	Strengthen good corporate governance and responsible business culture.	Drive sustainable value chain management practice.	Integrate and advocate shared value practices in Anantara operations.	Manage environmental impact and advocate for conservation.



Anantara The Marker Dublin Hotel
Grand Canal Square, Docklands, Dublin 2, D02 CK38
+353 01 687 5100 | groups.themarker@anantara-hotels.com
ANANTARA.COM