



ANANTARA
RIVERSIDE · BANGKOK
RESORT

JOURNEY INSPIRED BY THE RIVER OF KINGS.

Anantara Riverside Bangkok Resort invites you to explore the cultural sites of the city and discover breathtaking temples in this urban oasis. Illuminated by torch-lit garden paths and the sparkle of city lights, cherish a truly unforgettable holiday with outstanding Anantara service.

Opening Date:	1992
Address:	257/1-3 Charoennakorn Road Thonburi, Bangkok 10600, Thailand
Telephone:	+66 (0) 2476 0022
Facsimile:	+66 (0) 2476 1120
Central Reservations:	+66 (0) 2365 9111
Central Reservations Email:	reserveanantara@anantara.com
Email:	bangkokriverside@anantara.com
Web Address:	bangkok-riverside.anantara.com



LOCATION

Anantara Riverside Bangkok Resort harmonises the best of city life and resort luxury. The hotel, which overlooks the Chao Phraya River, is situated opposite Bangkok's largest night market, Asiatique. Relax by the pool in our tropical gardens. Cherish early morning tea with spectacular views. Explore city delights just 15 minutes from the hotel by luxury shuttle boat.

Management:

Ownership:

Cluster General Manager:

Cluster Director of Sales & Marketing:

Anantara Hotels, Resorts & Spas

Chao Phraya Resort Limited

Nikolaus Priesnitz

npriesnitz@anantara.com

Paul Counihan

pcounihan@anantara.com



ACCOMMODATION

Our guest rooms and suites embody an elegant Asian style found throughout our impeccably landscaped grounds. In each spacious room, Thai inspired design creates an environment of urban serenity. Natural light spills through large windows, brightening rich Thai silks and illuminating hardwood floors. Private balconies offer city, garden or river views. A full range of modern amenities ensure a stay filled with ease and comfort.

Deluxe Premier Room

Relax into a charming stay at our luxury hotel in Bangkok. Reflecting traditional Thai culture, backlit mirrored panels and solid makha wooden floors are balanced by the softness of rich Thai silk. Step through to a luxury bathroom with marble features. Enjoy city or garden views from your balcony as you sip morning tea or unwind in the evening with a movie.

Deluxe Premier River View Room

Awaken to views of the Chao Phraya River from one of the most enchanting riverside hotels in Bangkok. Space is redefined by expansive windows and high ceilings. Etched inscriptions add contemporary Thai style while a marble bathroom with rain shower offers total privacy, with sliding doors that open onto the bedroom.

Deluxe Premier River Front Room

Our Deluxe Premier River Front Rooms look directly upon the Chao Phraya River. Inside, classic Thai design includes solid makha wooden flooring, rich silks and backlit mirrored panels. Watch ambient sunsets and magical nights from your writing desk and armchair. A luxurious marble bathroom invites you to refresh under the rain shower or soak in the tub. For additional space, the sliding doors connect to the bedroom.

Junior Premier Suite

Enjoy the luxury of a private balcony and floor to ceiling windows in this contemporary riverside haven. The interior is tastefully furnished with a sofa and a writing desk. The magnificent bathroom with its marble floors offers generous space and exclusive amenities.

Junior Premier River View Suite

Admire wonderful vistas of the Chao Phraya River from your private balcony and through floor to ceiling windows. Timeless Thai culture is depicted in ancient etched inscriptions adjacent to the backlit bed headboard. Uplighting enhances the dramatic high ceiling. The opulent bathroom offers ample space and luxury amenities. Relax in front of the television or allow music from your iPod to set the perfect mood. Kasara privileges offer a wide range of exclusive benefits and experiences to add to a memorable stay.



Anantara River Front Suite

The wraparound balcony provides a panorama of lush gardens, the Chao Phraya River and cityscape beyond. The carpeted bedroom features an LCD TV and DVD player, a writing desk and floor to ceiling windows. Walk through to the living area to find dining furniture seating four, a full sofa set, a second television and an iPod dock. The gracious bathroom offers dual vanity basins, a rain shower and soaking tub. Exceptional Kasara benefits ensure that your stay feels highly exclusive and truly indulgent.

Two Bedroom Chao Phraya River Suite

Breathtaking river views and extravagant space epitomise these two bedroom suites. Clean lines complement contemporary Thai-inspired artistry. Elegantly furnished bedrooms adjoin marble floor bathrooms, each featuring a generous bathtub, rainforest shower and designer amenities. The dining area flows onto a sophisticated lounge. With a wine cooler, two mini bars, an iPod dock and three LED TVs and DVD players, these suites feel wonderfully decadent. Exclusive Kasara privileges promise the ultimate Anantara experience.

ROOM FEATURES

- Balcony with river, city or garden view
- Spacious lounge area
- Separate bathtub, shower and toilet
- Tea and Nespresso coffee making facilities
- Complimentary internet access via LAN and WiFi
- The Handy, a new in-room innovation to stay connected
- King or twin bed
- Select suites come with double vanity sinks
- In-room mini bar
- LCD TV and DVD player
- iPod dock in suites

IN-ROOM HANDY SMARTPHONE

Stay connected at our hotel and when on the move with this innovative travel companion. Keep in touch with friends and family. Explore the local area and discover hidden gems. Find special offers and make reservations.

Handy features:

- Unlimited local calls
- Unlimited international calls to 10 destinations (including the United States, Great Britain, the United Arab Emirates, India, South Korea, Singapore, Hong Kong, Japan, China and Australia)
- Unlimited 3G data connectivity with WiFi tethering capability to other mobile devices, such as laptops and tablets
- Popular pre-installed apps: social media apps such as Facebook, Twitter and Instagram, and travel apps like currency converter, maps, GPS, news and translation services
- Additional apps can be installed from Google Play Store
- Digital city guide with recommendations and promotions for restaurants, shops and tourist attractions
- Information on hotel facilities, services, events and special offers
- Incoming hotel room calls and room to room calls
- Hotel direct dial features, including instant access to the hotel concierge



GUEST SERVICES

- Business centre
- Babysitting
- Meeting and banquet facilities
- Complimentary luxury boat service to the Saphan Taksin skytrain station / Robinson Department Store and downtown area (15 minutes).
- Kasara benefits
- Concierge
- Valet parking
- Wedding facilities
- Complimentary luxury boat service to Asiatique night market and entertainment area (5 minutes).

KASARA GUEST BENEFITS

- Personalised express check-in and check-out service
- Complimentary late check-out at 3.00 pm (subject to availability)
- Kasara breakfast at Kasara Lounge 6.00 am – 10.30 am or the breakfast buffet at The Market
- High tea from 2.00 pm – 4.00 pm
- Sundowner cocktails from 5.00 pm – 7.00 pm
- Refreshing beverages available all day
- WiFi hotel-wide
- Laundry or pressing of four pieces per stay and a 20% discount on all additional items
- 15% discount on all single Anantara Spa treatments (exclude poolside and salon services)
- Personalised service of Kasara Lounge Associates
- iPads available, to be used at Kasara Lounge
- Two hours' complimentary use of the business centre per day per room

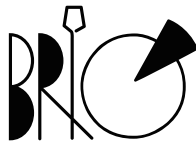
LEISURE

Invigorate before a meeting with riverside yoga, or wind down with a well deserved spa experience. Take a swing at our wonderful choice of golf courses. Experiment with a cooking class at The Market restaurant or as you journey down the river aboard a Manohra Dining Cruise dining aboard the Manohra Cruises. Discover Bangkok's famous attractions or step behind the scenes with intriguing local experiences.



ROOM TYPE	TOTAL		ROOM SIZE (SQM)	BALCONY SIZE (SQM)	ACCEPT ROLL AWAY	MAX OCCUPANCY
Deluxe Premier Room	164		38	3	Yes	2
	61 King	103 Twin				
Deluxe Premier River View Room	107		38	3	No	2
	65 King	42 Twin				
Deluxe Premier River Front Room	36		38	3	Yes	2
	25 King	11 Twin				
Junior Premier Suite	48		48	4	Yes	3
	37 King	11 Twin				
Junior Premier River View Suite	26		48	4	Yes	3
	19 King	7 Twin				
Anantara River Front Suite	25		108	23	Yes	3
	22 King	3 Twin				
Two Bedroom Chao Phraya River Suite	2		114	12	Yes	4
TOTAL	408					

DINING



Savour the tastes of Italian home cooking in a Tuscan villa setting. Choose from an array of traditional favourites including handmade pastas and pizzas from the wood fired oven, complemented by a vast collection of fine Italian wines.

Opening hours: Lunch 11.30 am – 2.30 pm
Dinner 6.00 pm – 10.30 pm

Cuisine: Italian

Seating capacity: 95 with 3 semi private rooms
seating 6 – 20



Riverside Terrace



This spellbinding evening of performance and gourmet dining is the perfect way to appreciate Thailand's rich cultural heritage. Enjoy an amazing selection of succulent meats, fresh seafood and decadent desserts, showcased from vibrant live cooking stations, against a magical river backdrop.

Opening hours: Dinner 6.00 pm – 10.00 pm
Contemporary Thai Performance
from 7.00 pm

Cuisine: International Buffet

Seating capacity: 250



A global name for over 75 years, Trader Vic's serves the finest Pacific Rim cuisine, including unique tastes cooked in Bangkok's only Chinese wood fired oven. Toast tranquil views from the waterfront terrace with signature Trader Vic's cocktails. Enjoy exotic culinary journeys enhanced by live music in a Polynesian inspired dining room or tropical riverside garden.

Opening hours: Dinner 6.00 pm – 11.00 pm
Mai Tai Bar 6.00 pm – 1.00 am
Sunday Brunch 11.30 am – 3.00 pm
Closed for dinner on Sunday

Cuisine: Polynesian and Tropical Pacific Rim Bar
and Restaurant

Seating capacity: 115 with 2 private rooms
seating 6 – 8 and 14 – 18



BENIHANA

Talented chefs create sumptuous Teppanyaki dishes with theatrical cooking displays, promising unforgettable “eatertainment”. Alternatively select from an à la carte menu of hand crafted sushi, sashimi and signature rolls.

Opening hours: Lunch 11.30 am – 2.30 pm
Dinner 6.00 pm – 10.30 pm

Cuisine: Japanese Teppanyaki

Seating capacity: 136 with 2 private rooms for 16



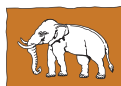
THE MARKET

Start each day with an international breakfast buffet or delicious à la carte options. Dine in the Asian dining room featuring floor to ceiling windows, or on the al fresco terrace with tropical garden and river views.

Opening hours: Breakfast Buffet 6.00 am – 10.30 am
À la carte Breakfast 6.00 am – 10.30 am

Cuisine: International

Seating capacity: 130 (Indoor) 250 (Outdoor)



Elephant Bar

Our colonial, Asian inspired lounge bar is the ideal venue for pre-dinner cocktails, relaxing evening nightcaps, or to watch live televised sports.

Opening hours: 5.00 pm – 1.00 am

Seating capacity: 60



Numero UNO Cafe

Stop by for morning coffee and freshly baked pastry. Create your own sandwich at lunch. Discover a chocoholic paradise of hand crafted delicacies that make for the perfect gift.

Opening hours: 7.00 am – 10.00 pm

Cuisine: Light Snack, Sandwiches, Cakes

Seating capacity: 80



Sip cocktails on the pier by the Chao Phraya River at sunset, before delicious aromas from the barbeque tempt you to share a candlelit dinner.

Opening hours: 4.00 pm – 12.00 am

Seating capacity: 80



Relax with refreshments amidst tropical gardens and river views. Sip juices and cocktails at the swim-up bar, or relax at a shady table on the pool deck with a snack.

Opening hours: 10.00 am – 7.00 pm

Seating capacity: 50



Step aboard a beautifully restored antique rice barge and cruise in old world elegance along the River of Kings. Pass famous royal sites, exquisite temples and striking modern landmarks as you dine on fine Royal Thai cuisine.

Opening hours: 7.30 pm – 9.30 pm

Cuisine: Thai

Seating capacity: 30, 46 and 70 per boat










Choose from a collection of connoisseur menus. Hideaway in a riverside Thai sala or cruise along the river aboard the Anantara Dream. Toast the ultimate in romantic dining as a private butler tends to your every need.

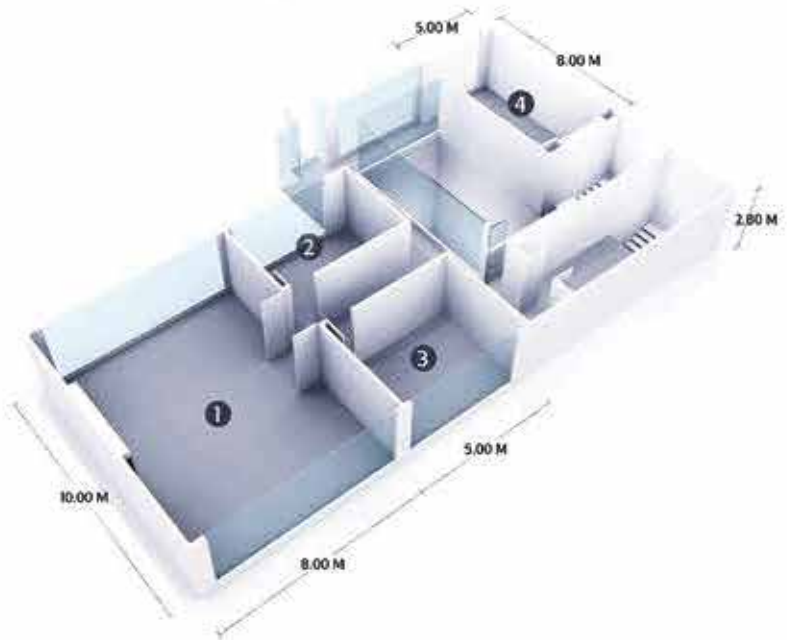
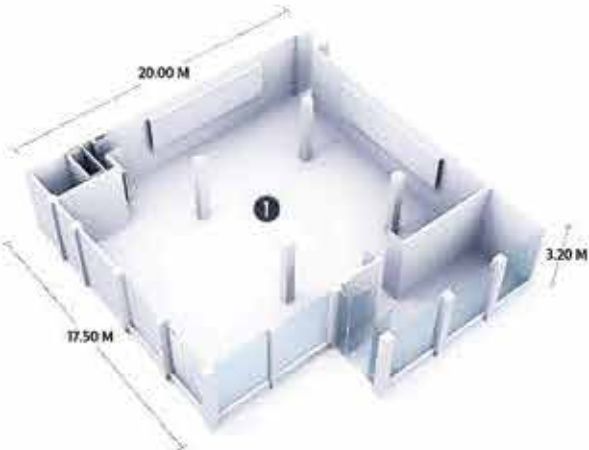
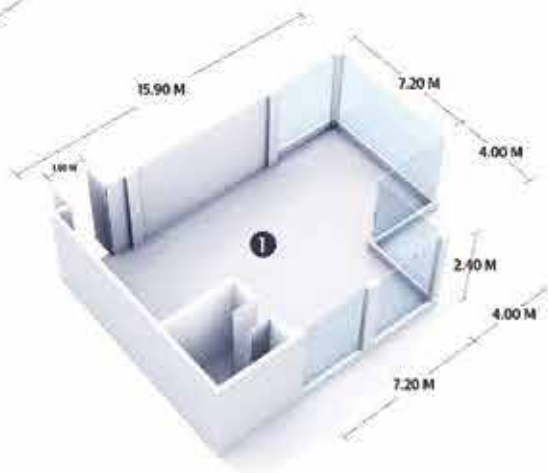
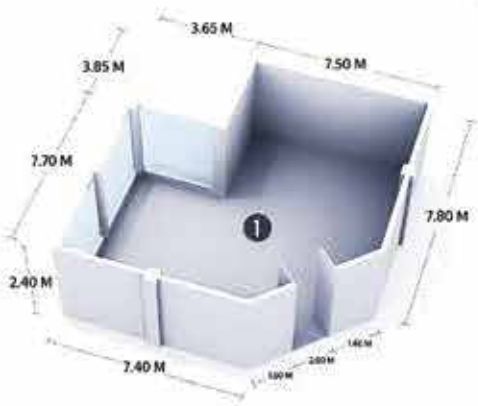
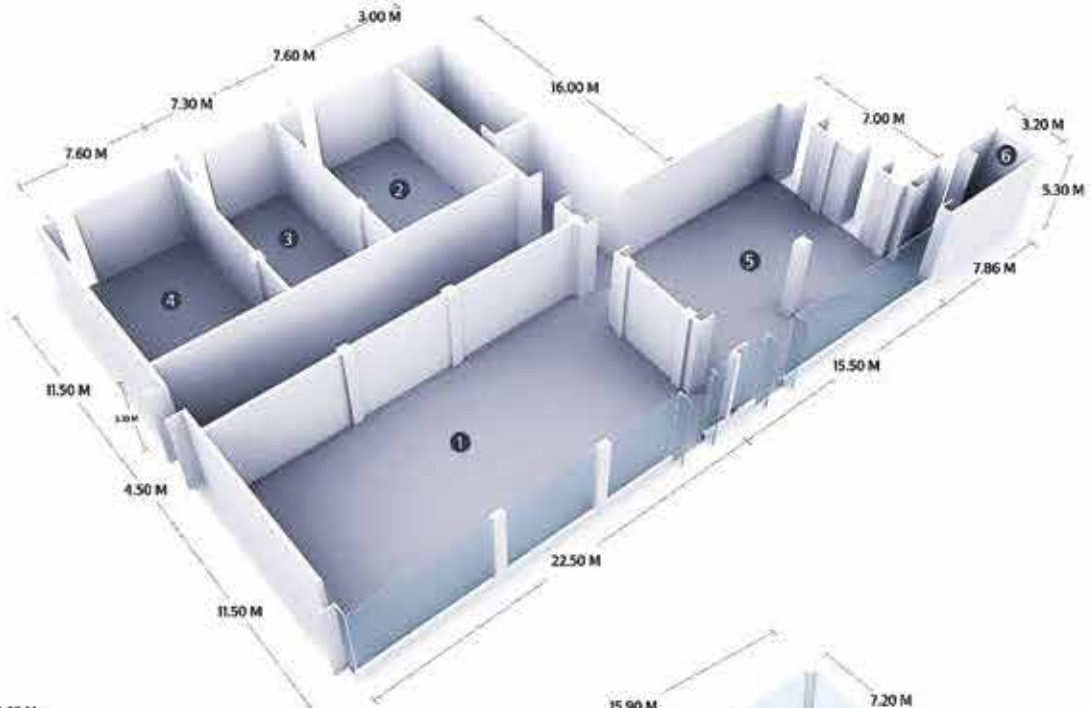


MEETING

Our 12 meeting venues are embraced by nature and flooded with natural light to spark creativity during even the most intensive business sessions. Our meeting and event spaces create a first-rate impression and offer capacity for as many as 600 delegates. Enjoy state of the art audio visual systems. For a lavish occasion, the elegance of Thai silk walls and impressive entrance doors make the Chaophraya Ballroom an ideal choice.

MEETING ROOMS	AREA		DIMENSIONS (WXLXH)		 Theatre	 Classroom	 U-Shape	 Banquet 10	 Cocktail	 Boardroom	 H-Square
	SQM	SQ FT	METRES	FEET							
Chaophraya Ballroom	619	6,657	22.5x27.5x5.3/3.1	73.8x90.2x17.3/10	600	360	-	540	600	-	-
Ballroom A	260	2,782	11.5x22.5x5.3	37.7x73.8x17.3	200	120	50	150	200	-	60
Ballroom B	88	939	7.6x11.5x3.1	24.9x37.7x10.2	60	45	25	-	--	-	30
Ballroom C	88	939	7.6x11.5x3.1	24.9x37.7x10.2	60	45	25	-	-	-	30
Ballroom D	88	939	7.6x11.5x3.1	24.9x37.7x10.2	60	45	25	-	-	-	30
Ballroom B/C/D	260	2,782	11.5x22.5x3.1	37.7x73.8x10.1	180	100	45	150	200	-	70
Charoennakorn Room	144	1,912	11.2x15.9x2.4	36.7x52.1x7.9	100	45	40	70	90	-	50
Thonburi Room	106	1,372	11.1x11.5x2.4	36.4x37.7x7.9	50	33	25	30	-	50	40
Garden Room	300	3,760	17.5x20x3.2	57.4x65.5x10.5	200	120	47	220	180	-	60
Jasmine Room	80	686	8x8x2.8	26.2x26.2x9.2	40	25	24	30	-	-	30
Bamboo Room	20	161	3x5x2.8	9.8x16.4x9.2	-	-	-	-	-	10	-
Poppy Room	20	161	3x5x2.8	9.8x16.4x9.2	-	-	-	-	-	10	-
Lotus Room	32	343	4x8x2.8	13.1x26.2x9.2	-	-	-	-	-	12	-
Business Centre	32	344	4.4x7.3x2.4	14.4x23.9x7.9	-	-	-	-	-	13	-
Grand Sala	-	-	-	-	-	-	-	-	400	-	-
The Market	-	-	-	-	-	-	-	-	250	-	-
Trader Vic's	-	-	-	-	-	-	-	-	220	-	-
Trader Vic's Garden	-	-	-	-	-	-	-	-	70	-	-

FLOOR PLANS





TAILORED EVENTS

Our team of professionals tailor events to combine any setting, theme, cuisine, entertainment and activity to suit your group's individual needs. Transform an executive session into a comfortable occasion by adding Thai cushions for relaxation. Re-energise during a meeting with a creative coffee break, or replenish with a garden picnic.

Let the real Bangkok come to you, courtesy of themed tuk-tuk or floating market dining concepts. Party aboard the Manohra Cruises, where voyages are inspired by a choice of enterprising themes. Alternatively, collaborate with our culinary team and combine your own ideas with our imaginative suggestions to create an unforgettable occasion.

WEDDINGS

Share your first dance as husband and wife against the backdrop of the Chao Phraya River. Exchange vows on a covered bridge overlooking gardens in full bloom. Celebrate with family and friends aboard a sunset on the Manohra Cruises.

Select from our stylish indoor and outdoor wedding venues to create the wedding of your dreams, whether that's an elaborate ceremony stretching over a series of days or an intimate ceremony for two. At the Anantara Riverside Bangkok Resort we promise to transform your fantasy wedding into an unforgettable memory.



ANANTARA SPA

An oasis within an oasis, our spa sanctuary invites you to embark upon a revitalising journey. Indulge in a blissful individual experience or a romantic side by side ritual. Let intuitive hands alleviate stress and restore natural beauty with a choice of ancient remedies and contemporary techniques.

SIGNATURE TREATMENT

Signature Rice Ritual

Skin is cleansed and polished with a scrub rich in antioxidants and nourishing vitamins. A full body massage incorporates a specially blended rice bran oil and pressure point and stretching techniques to release tension, pain and stress. While the Anantara Signature Facial combines the perfect blend of nourishing plant extracts and traditional Thai ingredients to revitalise your complexion.

Anantara Signature Massage

Our signature blend of oil, combined with purpose designed movements, stimulates circulation, promotes deep relaxation and restores the flow of energy.

Opening hours: 10.00 am – 10.00 pm

FITNESS CLUB

Our fitness club offers a range of cardiovascular and muscle training equipment to be used at your leisure. Daily classes including yoga, power step and aerobics.

EXCURSIONS

Each day, Anantara features a range of organised and do-it-yourself area excursions that let you see beyond the boundaries of the hotel.

ANANTARA CRUISES

Anantara Cruises invites you to journey back to a time when the majestic Chao Phraya River was the heart of Thai life. Step aboard our exquisite 100 year old rice barge, rebuilt from shining teak and lavishly converted to its present splendour. Embark on a historical voyage in modern comfort and explore Bangkok's famous landmarks. Set off from the Anantara Riverside Bangkok pier on a three day, two night cruise and travel north to the ancient town of Ayutthaya.



AIRPORT TRANSPORTATION

Located on the west bank of the Chao Phraya River, Anantara Riverside Bangkok Resort is approximately 1 hour from Suvarnabhumi International Airport and approximately 45 minutes from Don Muang Airport.

We also provide limousine services which include a fleet of hybrid vehicles from both the airports. Public taxis are also available from the pick-up counters at the airport. Public transportation from the airport is available by connecting to the BTS Skytrain from the Airport Rail Link.

Anantara's Bangkok river hotel is a short 15 minute boat ride from Saphan Taksin Skytrain station, connecting you to many other city locations. The hotel is also just 5 minutes from Asiatique, Asia's largest night market.

Boat transfers are complimentary and depart from Saphan Taksin BTS and the resort regularly. Whether you fancy a relaxing holiday by the pool or a thrilling urban adventure, our Riverside Bangkok hotel is conveniently situated for every type of traveller.

TRAVEL NOTES

Voltage 220 – 240AC, 50 Hertz

Currency Thai Baht (THB)
USD 1 = THB 35*
*rate subject to fluctuation

Time Zone GMT +7 hours

Climate

November – February (Dry season): Temperatures range between 23°C to 31°C accompanied by refreshing winds. Natural fibres and breathable clothing are recommended.

March – May (Hot season): Between March and May the temperatures range from 30°C to 35°C. Natural fibres and breathable clothing are recommended.

June – October (Monsoon season): Temperatures range from 24°C to 31°C. Refreshing rain showers often last for only short periods before becoming sunny once again. Natural fibres, breathable clothing and light waterproofs are recommended.