



ANANTARA

MUI NE RESORT

## Conference and meeting facilities brisbane

Embrace productive meetings with a backdrop of palms and a shimmering sea. Treat your company to fresh seafood luncheons. Build your team with fun sessions on ATV adventure trails. Choose from a variety of state-of-the-art facilities to begin designing your bespoke corporate package at Anantara Mui Ne

# Venues

## L'Anmien Ballroom

Seat up to 160 people in our spacious 186 sqm ballroom. An ideal venue for company-wide meetings or banqueting.

## Orchid








Choose a more intimate setting with the private Orchid. This room offers 51 sqm of space with seating for up to 20 people.

## Jasmine

The mid-sized Jasmine is spacious 64 sqm with seating for up to 40 people.

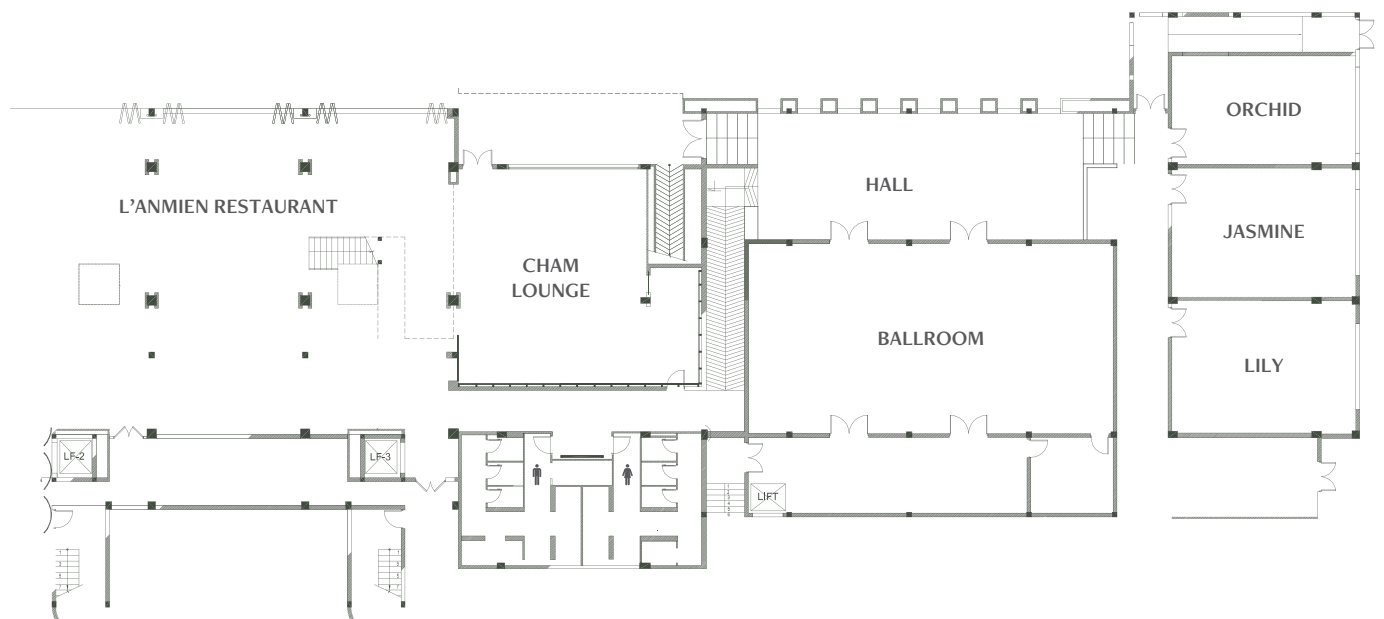
## Lily

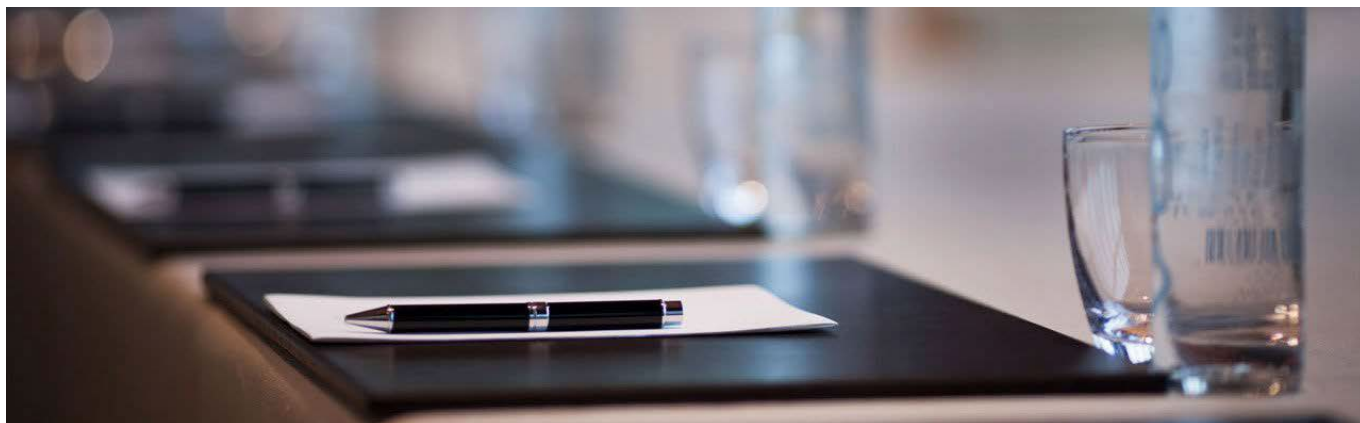
The Lily accommodates up to 60 people within 74 sqm of space.

Meeting rooms	Area		Dimensions (L x W x H)								
	m <sup>2</sup>	ft <sup>2</sup>	m	ft	Theatre	Class-room	U-Shape	Board-room	Banquet	Cocktail	H-Square
L'Anmien Ballroom	186	1,984	9,8 X 19 X 3,5	32 X 62 X 11	160	100	100	-	100	170	-
Orchid	51	558	5,4 X 9,5 X 2,7	18 X 31 X 9	-	-	-	20	-	-	-
Jasmine	64	682	6,7 X 9,5 X 2,7	22 X 31 X 9	40	30	20	-	40	40	-
Lily	74	800	7,6 X 9,8 X 2,7	25 X 32 X 9	60	40	20	-	40	60	-

m<sup>2</sup> = square metres, ft<sup>2</sup> = square feet, m = metres, ft = feet

# Meeting Map





## Meeting packages

Anantara Mui Ne Resort combines state-of-the-art technology and world-class facilities services by the resort's well-trained banquet team. The Anantara Meeting room accommodates up to 55 guests for medium sized corporate events or team building activities, with wireless internet offering immediate access to the head office of company website.

- Full-Day Package (with lunch): VND 1,250,000++ per participant
- Full-Day Meeting (without lunch): VND 1,050,000++ per participant
- Half-Day Package (with lunch): VND 750,000++ per participant
- Half-Day Meeting (without lunch): VND 650,000++ per participant

### Package Inclusion

- Usage of meeting room from 8:00 am – 5:00 pm
- Two coffee breaks (am/pm) with sweets or snacks
- Unlimited coffee/tea throughout the meeting
- Lunch at a private section or outlets (upon availability) to be selected from:
  - Vietnamese/International buffet
  - Asian set lunch
  - 3-course Western set lunch

### Standard Set Up

- Podium with microphone
- Flipchart & whiteboard with markers
- Overhead projector, screen
- Laser pointer, writing materials
- Signboard arrangement
- Complimentary mineral water
- Candies

### Condition:

- Rates are subject to 5% service charge and 10% VAT
- The package is based on a minimum of 20 persons