



ANANTARA

GOLDEN TRIANGLE  
ELEPHANT CAMP & RESORT



## Wild luxury and jungle adventures

Walk with elephants. Sleep under the stars, observing these gentle giants in their natural habitat. At Anantara Golden Triangle Elephant Camp & Resort, we invite you on once-in-a-lifetime journeys at our hilltop retreat in Chiang Rai. Wake up to spectacular panoramas over Thailand, Laos and Myanmar and curate unforgettable adventures.

**Address:** 229 Moo 1, Chiang Saen,  
Chiang Rai 57150, Thailand

**Telephone:** +66 53 784 084

**Facsimile:** +66 53 784 090

**Reservations:** +66 2 365 9110

**Reservations email:** [reserveanantara@anantara.com](mailto:reserveanantara@anantara.com)

**Email:** [goldentriangle@anantara.com](mailto:goldentriangle@anantara.com)

**Web address:** [anantara.com/golden-triangle-chiang-rai](http://anantara.com/golden-triangle-chiang-rai)



## Location

Unfolding across 160 acres of northern Thailand's ancient jungle, Anantara Golden Triangle Elephant Camp & Resort is perched on a hill overlooking the Mekong and Ruak rivers. The secluded location offers majestic views over the confluence of Thailand, Laos and Myanmar.

Shrouded in history, and once the epicentre for poppy cultivation for all of Thailand, the Golden Triangle has long held a mysterious allure. Get lost in the natural splendour of the surrounding area. Explore the old Lanna capital Chiang Saen. Take a day trip across the border into Laos and Myanmar or experience our Elephant Camp, modelled on traditional mahout villages and home to the resort's rescued elephants.

Whether your focus is on recreation and adventure or you are seeking indulgence and relaxation, this exquisite retreat has something for everyone, from family-friendly excursions to romantic getaways. Located just over 60 kilometres from Chiang Rai International Airport, a visit to Anantara Golden Triangle Elephant Camp & Resort puts all of the mythical Golden Triangle's treasures at your doorstep.

### **Management:**

Anantara Hotels & Resorts

### **General Manager:**

Jean Marc Pougnet

[jpougnet@anantara.com](mailto:jpougnet@anantara.com)

### **Director of Sales:**

Rojjirat Opassuwan (Champagne)

[rojirrat\\_op@anantara.com](mailto:rojirrat_op@anantara.com)

### **Cluster Director of Marketing & Communications**

Supa-arpha Itthikaiwan (Mandy)

[supaarpha\\_it@anantara.com](mailto:supaarpha_it@anantara.com)



## Unique experiences

Create unforgettable memories from the moment you arrive to our award-winning resort. Savour an evening meal on your arrival night. Wake up to a leisurely breakfast and admire sweeping views across three countries. Delve into the Golden Triangle's infamous past with a visit to the world-class Hall of Opium Museum, conveniently located just across from our beautiful resort.

Craft your own journey by selecting from a range of activities, like an indulgent treatment at Anantara Spa, an authentic Thai cooking class, a walk with elephants, or a fascinating one-day discovery tour of the Golden Triangle. Prepare for an exhilarating ride around the resort, Thailand's lush jungles and beyond in a Royal Enfield Classic 500 sidecar. Spend an unforgettable night observing the elephants in their natural habitat from a fully transparent Jungle Bubble.

### **Elephant Adventures**

Connect with these gentle giants in their natural environment and discover Thailand's intrinsic relationship with them. Saunter through bamboo forests and view breathtaking landscapes from a unique perspective.

### **E.L.E. - Elephant Learning Experience**

Observe the behaviour and playful interaction of the Golden Triangle Asian Elephant Foundation's rescued elephants, and for every booking, we will donate an additional THB 2,000 to support these important works.

### **Walking with Giants**

Embark on an exploration of the jungle wilderness with our elephants and their mahouts on their daily walks. Admire these gentle giants as they splash in the river or play in the mud, snack on leaves from nearby branches and socialise with the herd.

### **Elephant Guardian**

Learn the fascinating historical and cultural customs of mahouts and their elephants. Our team will share their traditional knowledge and teach you to make medicinal food for our older rescued elephants.



## Jungle Bubbles

A once-in-a-lifetime experience awaits as you spend the night in your very own, fully furnished and transparent Jungle Bubble. Perched on a wooden deck, two luxurious bubbles offer uninterrupted views of the elephants in their natural habitat as well as the starlit sky above.



## Jungle Bubble Lodge

Share an inspirational Jungle Bubble experience with family or friends in our expansive Jungle Bubble Lodge. With two bedrooms, a separate communal living space, and a generous outdoor deck with a plunge pool and al fresco lounge area, our luxurious lodge elevates your night in nature to a whole new level.



# Golden Triangle discovery excursion\*

Embark on a full-day journey through the storied landscapes of the Golden Triangle, discovering the region's cultural heritage and natural beauty by river and road.

Begin your adventure on the water, choosing between a traditional longtail boat or Nakara Boat, a beautifully restored Eiam Jun teak rice barge once used to transport goods along Northern Thailand's rivers. Glide upstream to Sop Ruak, where Thailand, Laos, and Myanmar converge at the legendary meeting point of three nations.

Continue inland to Wat Pa Sak, regarded as the gateway to Chiang Saen, where seven ancient monuments reflect early Lanna influences. Explore the historic Wat Chedi Luang, home to a striking eight-sided chedi that speaks to centuries of spiritual and architectural significance. Conclude the journey at Wat Phra That Phukhao, climbing its steps to discover atmospheric ruins and panoramic views overlooking the Mekong River.

A thoughtfully curated excursion, this discovery invites guests to connect with the Golden Triangle's timeless history, sacred sites, and evocative river landscapes.

\*Subject to travel authorisation and visa restrictions at the time of booking.





## Spice Spoons by Anantara

Immerse yourself in the delicate art of Thai cuisine as you unravel the secrets behind some distinctly northern specialties. Your journey begins with a guided tour of one of the bustling local markets where you will learn to select the finest spices and freshest produce, collecting the perfect range of ingredients. Return to resort and let our master chef guide you as you prepare delectable curries, soups, appetisers and traditional desserts.

# Accommodation

Luxuriously appointed with crisp Thai silks, teakwood floors and romantic terrazzo tubs big enough for two, Anantara Golden Triangle Elephant Camp & Resort is the ideal choice for a relaxing retreat. Spacious balconies, king or twin beds, down duvets and a superior range of amenities, accented by spectacular views across the Mekong River and Thailand, Laos and Myanmar.

## Deluxe Three Country View Room

Begin your day of exploration and adventure by stepping onto the balcony for breathtaking vistas of the mist rising off the hills of Thailand, Laos and Myanmar. Lustrous teak floors and rich Thai silks accent all 40 Deluxe Three Country View Rooms, with 32 sqm to enjoy. Each room incorporates many local design features to complement the dramatic vistas outside while modern comforts like a flatscreen TV, espresso machine and speaker ensure maximum comfort.

## Mekong Explorer Suite

Inspired by the explorers of the Mekong, these suites blend Thai Lanna design with colonial charm. Dark wood panelling and elephant motifs highlight the Asian aesthetic, while vintage travel trunks add a classic Western touch. Each suite is named after a region along the Mekong River, with matching artwork displayed above the headboard.

## Mekong Explorer Pool Suite

Discover elevated luxury in the Mekong Explorer Pool Suite, where a private pool overlooks the breathtaking meeting point of three countries. Bask on the sunlit terrace surrounded by lush landscapes and mountain views, with the gentle flow of the Mekong River setting a serene ambience. Inside, elegant furnishings, modern amenities, and a spacious layout provide the perfect retreat for couples seeking comfort, privacy, and relaxation.

## Mekong Explorer Family Suite

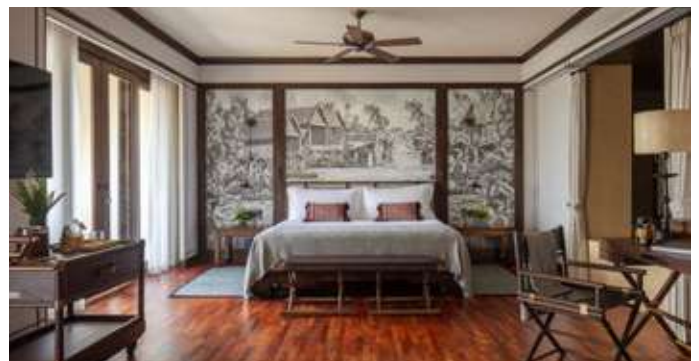
Designed with families in mind, the Mekong Explorer Family Suite blends Thai Lanna charm with subtle colonial influences. Spacious living and sleeping areas provide comfort for all, while travel-inspired décor reflects the rich heritage of the Golden Triangle. Thoughtfully designed for shared moments and relaxation, this suite offers a luxurious yet welcoming retreat for families exploring the region together.

## Mekong Explorer Family Pool Suite

Designed for families, the Mekong Explorer Family Pool Suite combines Thai Lanna charm with subtle colonial touches. A private pool overlooks the Golden Triangle and the Mekong River, offering the perfect setting for quality time together. Spacious living and sleeping areas ensure comfort for all, while travel-inspired décor reflects the region's storied waterways. Blending luxury with family-friendly features, this suite is an ideal backdrop for lasting memories in a truly unique destination.

## Mekong Explorer Tent

The exquisite Mekong Explorer Tent is a stunning two-bedroom retreat designed for those who seek both adventure and comfort. Perched high on a hillside, this unique tent offers breathtaking views of the surrounding landscape. Ideal for families or friends seeking a shared escape, the Hillside Luxury Tent combines the thrill of outdoor living with the sophistication of a luxury stay. Escape the mundane and embrace the magic of nature in this extraordinary hillside retreat.





## Room features

- King or twin beds
- Balcony with garden and jungle views
- Work desk with power sockets
- Wi-Fi internet
- IDD telephone with voicemail
- International satellite TV and DVD player
- In-room safe
- Individually controlled air conditioning
- Ceiling fans
- Minibar, tea and coffee-making facilities

## Guest services

- Anantara concierge
- Excursions and activities desk
- Wedding planning service
- Childcare
- Boutique with local silks, crafts and jewellery
- Laundry and pressing service
- Parking and valet service



Room type	Room size	Balcony size (m <sup>2</sup> )	Accept roll away bed	Max occupancy
Deluxe Three Country View Room (40 Rooms)	32 m <sup>2</sup> / 344 ft <sup>2</sup>	7.98	Yes	3 Adults or 2 Adults + 1 Child
Mekong Explorer Suite (13 Rooms)	64 m <sup>2</sup> / 689 ft <sup>2</sup>	15.96	Yes	3 Adults + 1 Child or 2 Adults + 2 Children
Mekong Explorer Pool Suite (2 Rooms)	64 m <sup>2</sup> / 689 ft <sup>2</sup>	37 (Pool 28 + Terrace 9)	Yes	Maximum 3 adults & 1 child
Mekong Explorer Family Suite (4 Rooms)	96 m <sup>2</sup> / 1,033 ft <sup>2</sup>	23.94	Yes	Maximum 6 adults & 1 child
Mekong Explorer Family Pool Suite (2 Rooms)	96 m <sup>2</sup> / 1,033 ft <sup>2</sup>	23.59 (Pool 15.75 + Terrace 7.84)	Yes	Maximum 6 adults & 1 child
Mekong Explorer Tent (2 Rooms)	75 m <sup>2</sup> / 807 ft <sup>2</sup>	21.71	Yes	2 Adults + 1 Child
<b>Total</b> 63 Rooms				

m<sup>2</sup> = square metres, ft<sup>2</sup> = square feet

# Dining



## SALA MAE NAM

Suspended over three countries and drenched in natural light, Sala Mae Nam offers northern Thai specialties and international favorites in a riparian setting. Start with the chef's signature breakfast, snack while watching elephants, or enjoy candlelit dinners with fresh local cuisine.

**Opening hours:** Breakfast 6:30 am – 10:30 am  
Lunch 11:30 am – 2:30 pm  
Dinner 6:00 pm – 10:30 pm

**Cuisine:** Traditional Thai  
and Western

**Seating capacity:** 90

## SAMSARN

Samsarn, a unique culinary odyssey through the landscapes of Thailand, Myanmar, and Laos. Here, the rich traditions of the Golden Triangle's three regions come to life on your plate - each dish is a delectable journey through local delicacies, celebrating the unique flavours of this storied region, and crafted with elegance, refinement, and authenticity. Step into Samsarn and be transported to a world where the borders of Thailand, Laos, and Myanmar converge, not just geographically but gastronomically.

**Opening hours:** Dinner 6:00 pm – 10:30 pm  
**Cuisine:** Thai, Laos and Burmese  
**Seating capacity:** 23





### ELEPHANT BAR AND OPIUM TERRACE

Unwind after a long day's adventures and relax in our oasis of calm. Adorned with traditional Thai elements and flourishes of modern design, this comfortable refuge is open for all-day dining and drinks. Stop by for a signature cocktail or a light snack to keep hunger at bay.

**Opening hours:** 10:00 am - 12:00 midnight

**Cuisine:** Drinks and Light Bites

**Seating capacity:** 45

### CANOPY, TREE TOP DINING EXPERIENCE

Elevate your dining experience to dizzying new heights with Canopy, a unique culinary adventure set amidst breathtaking jungle vistas and embraced by the jungle's susurrus soundtrack. Escape the ordinary as you indulge in breakfast among the branches or an intimate treetop tryst. Magical moments await, at Canopy.

**Opening hours:** Breakfast: from 7:00 am

Lunch: from 11:00 am

Dinner: from 5:30 pm

**Cuisine:** Asian and International








**Seating capacity:** 4





# Meetings and events

Anantara's personalised service and indulgent touches combined with the retreat's stunning natural surrounding make Anantara Golden Triangle Elephant Camp & Resort an ideal venue for any business event or executive retreat. Embrace the opportunity for an unparalleled getaway in a stunning natural setting, luxurious accommodations, and rich immersions in the culture of this fabled region. Tailor-made activities and superior standards of service make Anantara Golden Triangle an unforgettable setting for incentive groups. In addition to providing a perfect meeting venue, Anantara's team can help craft an exclusive event curated for your group's needs, from intimate executive gatherings to motivational team-building activities.

Meeting rooms	Area		Dimensions (L x W x H)								
	m <sup>2</sup>	ft <sup>2</sup>	m	ft	Theatre	Class-room	U-Shape	Board-room	Banquet	Cocktail	H-Square
Mae Khong Room	216	2,325	12 x 18 x 2.7	39.4 x 59 x 8.9	144	80	32	36	80	144	36
Rim Khong Room	96	1,033.33	12 x 8 x 3	39.4 x 26.3 x 9.8	64	48	15	20	N/A	64	20

m<sup>2</sup> = square metres, ft<sup>2</sup> = square feet, m = metres, ft = feet



## Designer Dining by Anantara

As the day's light begins to fade with the setting sun, indulge in the ultimate romantic dining experience or intimate family time at a table set just for you. A customised menu is prepared by your personal chef and served at your choice of location. Savour the flavors of authentic Thai food or international cuisine at the Garden View Terrace, the boat pier overlooking the Ruak River, or in verdant rice paddies.



# A Timeless Celebration

Say 'I do' in the heart of the jungle. Indulge in an altogether original love story with your very own Lanna wedding. Exchange vows on a hilltop. Dance on a terrace overlooking the mountain peaks of three countries. Share sensual spa journeys and dine by candlelight all alone in the rice paddies, or with majestic elephants as your guests.



# Leisure

Surrounded by tranquil bamboo forests, beautifully landscaped gardens and jungle-covered mountains, Anantara Golden Triangle offers endless opportunities to embrace this tropical paradise. Whether you are seeking natural adventures, cultural immersion, or indulgent treatments, Anantara's range of organised and independent activities offers something for everyone.

- Award-winning infinity pool overlooking three countries
- Royal Enfield sidecar rides
- Nature walks, jogging tracks and birdwatching in 160 acres of gardens and bamboo forest
- Yoga and pilates
- Thai boxing
- Fully equipped fitness centre, sauna and steam room
- Mountain bikes
- Sky bike





# Spa by Nature

Nestled in a lush forest, our three-storey open-air spa pavilion offers breathtaking views of three countries. Relax with a nourishing milk bath and side-by-side massages, accompanied by the soothing sounds of nature. Drawing on centuries of northern wellness traditions, our treatments use hand-picked medicinal ingredients. Enjoy yoga and massages in a serene rice paddy pavilion, or start your day with reiki or mindfulness sessions led by expert practitioners. Rebalance with our deeply healing Spa by Nature experience, leaving you feeling at peace with yourself and the world.

## SIGNATURE TREATMENTS

### **Mahout Relaxation Package**

After a day of elephant adventures, enjoy the dual benefits of a Thai massage and accompanying Herbal Compress. Relax as rhythmic stretching, kneading and pressure point techniques promote healthy energy flow, and a heated compress filled with therapeutic herbs relieves muscular aches and pains.

### **Poo Loey Massage**

Experience the powerful remedial qualities of a northern Thai herb which is still revered by Thailand's traditional healers for its ability to treat stiff, tense and aching muscles and joints, and also relieve fatigue.

## SPA FACILITIES

- Five luxurious treatment rooms
- Private ensuite steam rooms
- Al fresco terrazzo soaking tubs with views of the Mekong Valley
- Full range of award-winning spa and aromatherapy products

**Opening hours: 10:00 am – 10:00 pm**



## Airport transportation / access

Anantara Golden Triangle is only 60 km from Chiang Rai Airport (CEI). We are happy to arrange transportation. Limousine and helicopter transfers are available for guests travelling from Chiang Mai. Please contact us for more information.

## Explorer's arrival

Begin your journey with a private car transfer from Chiang Rai Airport to the historic riverside town of Chiang Saen, located just 15 kilometres south of the resort. From there, continue by river aboard a private longtail boat or Nakara Boat, a beautifully restored Eiam Jun teak rice barge, as you cruise along the mighty Mekong River to the legendary meeting point of Thailand, Laos, and Myanmar—where the Golden Triangle begins.

Arrive at the resort's private jetty on the banks of the Ruak River for your first glimpse of the hilltop jungle retreat, greeted by a welcoming committee of elephants. Proceed to the lobby alongside the elephants or transfer comfortably by resort jeep.

The Explorer's Arrival takes approximately two hours, from Chiang Rai Airport to arrival at the hotel lobby.



# Travel notes

**Voltage:**

220 - 240V AC, 50 Hertz

**Currency:**

Thai Baht (THB) USD 1 = THB 31  
(subject to fluctuation)

**Time Zone:**

GMT +7 hours

**Climate:****November – February (Winter season)**

Temperatures range from 15°C to 31°C accompanied by refreshing winds. Natural fibres and breathable clothing are recommended.

**March – May (Hot season)**

Temperatures range from 30°C to 35°C. Natural fibres and breathable clothing are recommended.

**June – October (Green season)**

Temperatures range from 24°C to 31°C. Refreshing rain showers last for only a short period before the skies become sunny once again.

# Awards

## 2026

No. 2 Best Upcountry Hotels in Thailand, Travel + Leisure Luxury Awards Asia Pacific 2026  
No. 6 Best Hotel Pools in Thailand, Travel + Leisure Luxury Awards Asia Pacific 2026  
Best Spotlight 2026, Tatler Thailand  
Top 15 One-of-a-Kind Hotels in the World, Travelers' Choice Awards Best of the Best 2026, TripAdvisor

## 2025

Two MICHELIN keys  
No. 7 Best Upcountry Hotels in Thailand, Travel + Leisure Luxury Awards Asia Pacific 2025  
Best Family-Friendly Hotel with Nature Adventures in the Little Steps Asia Family Travel Awards 2025.  
UK Wedding & Honeymoon Awards, Honeymoon Asia  
100% Core Criteria Achievement Certification from Global Spirit 2025

## 2024

Two MICHELIN keys  
1st Grand Hotel Champion 2024 Certification  
Hospitality Awards 2024 - Best Innovative F&B Experience for Canopy, A Tree Top Dining Experience

## 2023

Travel + Leisure Readers' 100 Favorite Hotels in the World for 2023 #48 with a score 97.76 out of 100  
Travel + Leisure Readers' 5 Favorite Resorts in Southeast Asia #2 with a score 97.75 out of 100  
Travel+Leisure Luxury Awards Asia Pacific 2023 #5 Thailand - Upcountry Hotels  
Elite Traveler: World's Finest Top 100 Suites - (Gold - Transport)  
Elite Traveler: World's Finest Top 100 Suites - (Silver - Privacy)  
Elite Traveler: World's Finest Top 100 Suites - (Bronze - Sustainability)

## 2022

Conde Nast Traveler Readers' Choice Awards: #8 Top 20 Resorts in Thailand

## 2021

Conde Nast Traveler Readers' Choice Awards: #8 Top 20 Resorts in Thailand

# Accreditations

Unesco Sustainable Travel Pledge  
SHA Plus  
Department of Tourism  
Green Growth 2050 Platinum Certification  
Kiwi Collection

Thailand Tourism Standard  
Member of Signature Travel Network  
Traveller Made Hotel Partner  
Virtuoso Member Specialist in the Art of Travel  
American Express Fine Hotel & Resorts  
Global Spirit Animal Welfare Certification 2025 - 2027

ANANTARA GOLDEN TRIANGLE ELEPHANT CAMP & RESORT

229 Moo 1, Chiang Saen, Chiang Rai 57150, Thailand | +66 53 784 084 | goldentriangle@anantara.com

ANANTARA.COM