




ANANTARA
DOWNTOWN DUBAI
HOTEL

Anantara Downtown Dubai Hotel

Experience the vibrancy of Dubai with an immersive stay at
Anantara Downtown Dubai Hotel.

Delight in the wonders of the city on the doorstep as you are
enveloped in tranquil tropical refinement, just moments from
Dubai Mall and the iconic Burj Khalifa.



Location

Anantara Downtown Dubai Hotel is situated in the heart of Dubai city, five minutes from the Burj Khalifa and Dubai Mall.

The hotel is located in Business Bay, just 20 minutes by road from Dubai International Airport, with easy access to the city's endless attractions via Sheikh Zayed Road or the Dubai Metro.

Management:
Minor Hotels

General Manager:
Manish Jha
mjha@anantara.com

Accommodation

Anantara Downtown Dubai offers some of Business Bay's most spacious accommodation, with 252 elegant rooms and suites overlooking the dazzling skyscrapers that populate the celebrated skyline.

Every room and suite has recently received a refined upgrade, amplifying the luxury on offer in Dubai's elite business district. Five-star amenities include the fully stocked Refreshment centre, state-of-the-art TV system and designer toiletries.

All suites come with generous balconies and separate living spaces for maximum comfort and convenience, while the Anantara Royal Suite with Pool offers a private outdoor plunge pool for the ultimate in the city pleasure.



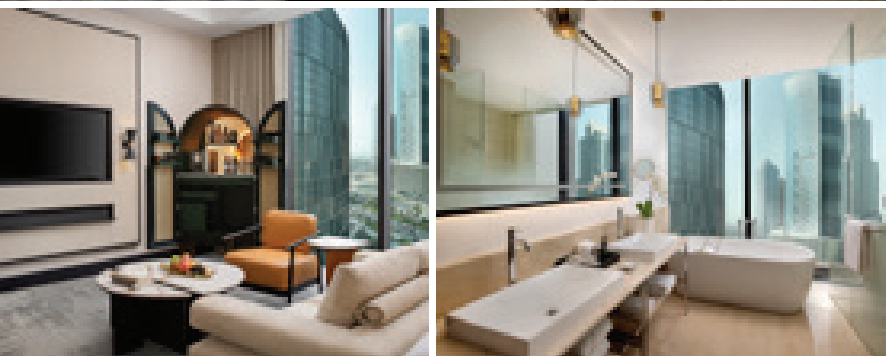


Superior City View Room

Newly renovated in a minimalist, elegant style, these Superior City View Rooms allow you the space to unwind in the heart of Dubai. Recline on a plush sofa watching the city stir each morning. Catch up with work at the desk or gaze at the light changing through floor-to-ceiling windows. The tub and rain shower invite you to wash off the day in comfort.

Size: 52 sq. m / 560 sq. ft
Occupancy: 2 Adults + 2 Children
Bed Type: King bed or twin beds

- City view
- Floor-to-ceiling windows
- Elegant décor
- Work desk with chair
- Relaxing sofa
- Separate tub
- Walk-in rain shower
- Flat TV & Chromecast
- Tea & coffee making facility
- Refreshment centre
- Complimentary Wi-Fi

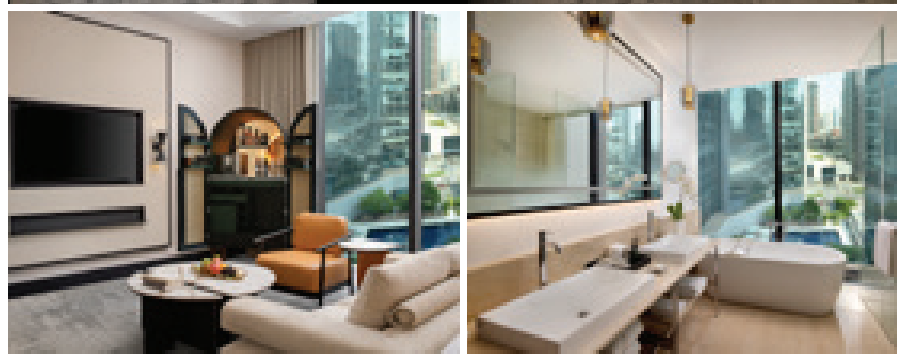


Superior Pool View Room

Take in the soothing views of the pool from your tranquil city base. Begin the day with a coffee, then step into a rain shower for a refreshing start. As dusk falls, the reflections of Downtown shimmer beyond through floor-to-ceiling windows, offering a moment of stillness before the city lights return.

Size: 52 sq. m / 560 sq. ft
Occupancy: 2 Adults + 2 Children
Bed Type: King bed or twin beds

- Pool view
- Floor-to-ceiling windows
- Elegant décor
- Work desk with chair
- Relaxing sofa
- Separate tub
- Walk-in rain shower
- Flat TV & Chromecast
- Tea & coffee making facility
- Refreshment centre
- Complimentary Wi-Fi



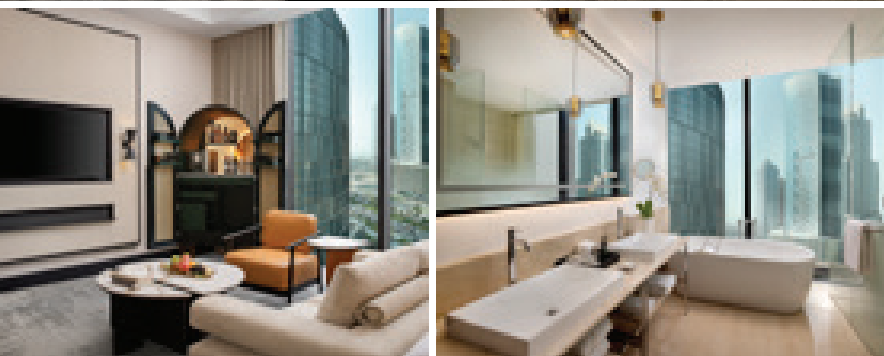


Deluxe City View Room

Offering premium views over Dubai's central business area from the hotel's higher floors, these rooms are perfect for both meeting days and escape. A sleek desk provides space to work, while a plush sofa invites relaxation. Drink in the iconic skyscraper views at sunset and sink into a bed dressed in soft linens when sleep calls.

Size: 52 sq. m / 560 sq. ft
Occupancy: 2 Adults + 2 Children
Bed Type: King bed or twin beds

City view
 Floor-to-ceiling windows
 Elegant, relaxing décor
 Work desk with chair
 Relaxing sofa
 Separate tub
 Walk-in rain shower
 Flat TV & Chromecast
 Tea & coffee making facility
 Refreshment centre
 Complimentary Wi-Fi

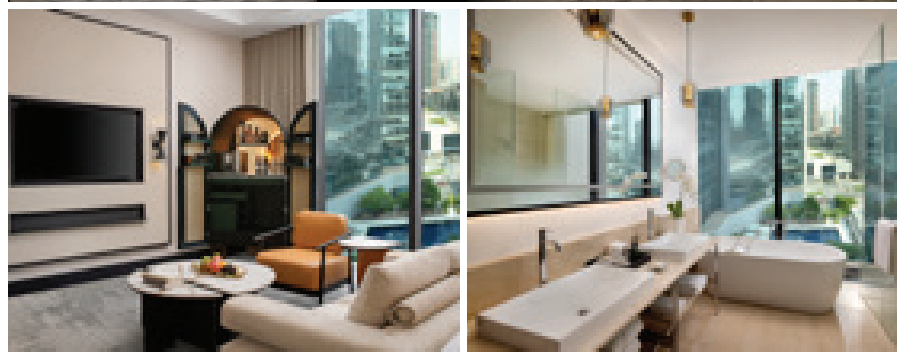
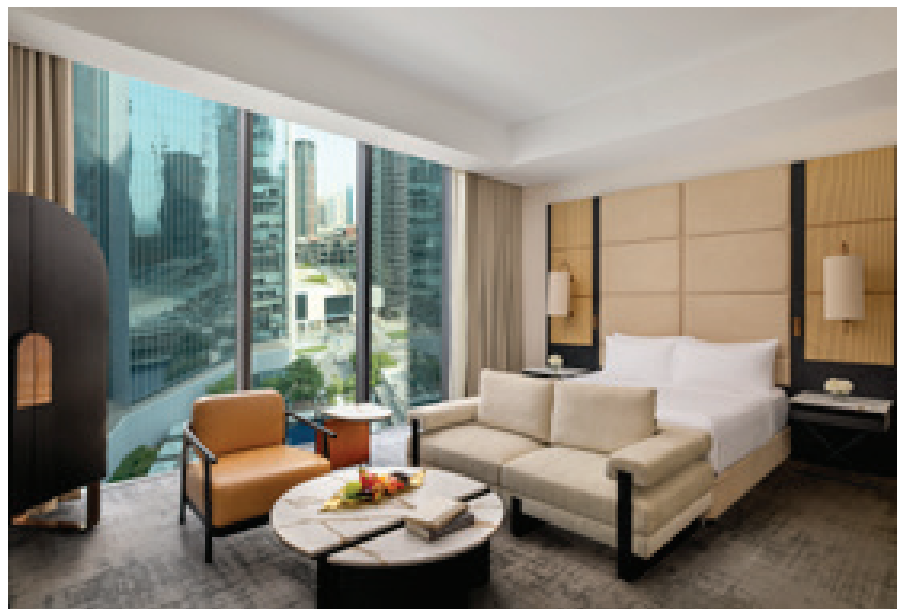


Deluxe Pool View Room

Your contemporary room in Business Bay is a restful respite from the busy boulevards. Enjoy the elegant comfort of your king or twin beds and admire the pool from the upper floors as it glistens in the light. Move slowly into your day with a steaming coffee before a reviving rain shower in your modern bathroom.

Size: 52 sq. m / 560 sq. ft
Occupancy: 2 Adults + 2 Children
Bed Type: King bed or twin beds

Pool view
 Floor-to-ceiling windows
 Elegant, relaxing décor
 Work desk with chair
 Relaxing sofa
 Separate tub
 Walk-in rain shower
 Flat TV & Chromecast
 Tea & coffee making facility
 Refreshment centre
 Complimentary Wi-Fi



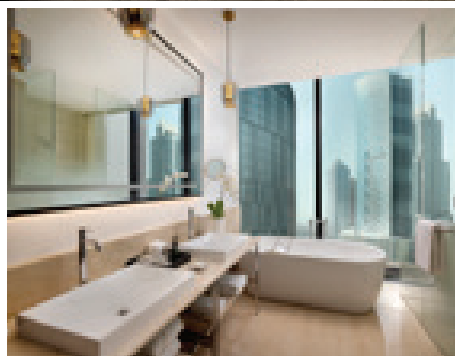
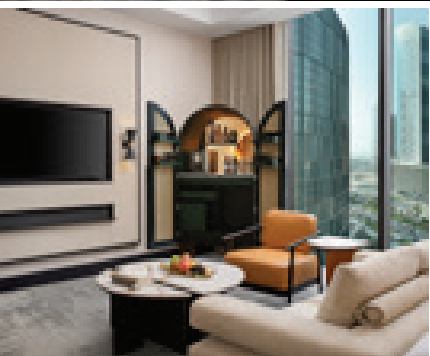


Signature City View Room

Check in early and draw back the curtains to admire the distinctive Dubai skyline from your expansive, yet minimalist hotel room. Choose between lingering in between soft linens or an energising start on your yoga mat. Mingle at the complimentary canapés and drinks session each evening for guests. Breakfast by your floor to ceiling windows and watch the city as it moves with intention on the boulevards below.

Size: 52 sq. m / 560 sq. ft
Occupancy: 2 Adults + 2 Children
Bed Type: King bed or twin beds

City view
 Floor-to-ceiling windows
 Evening drinks and canapés at Ziya every day
 Work desk with chair
 Relaxing sofa
 Separate tub
 Walk-in rain shower
 Flat TV & Chromecast
 Tea & coffee making facility
 Refreshment centre
 Complimentary Wi-Fi

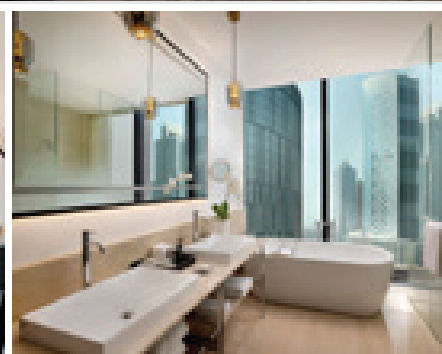
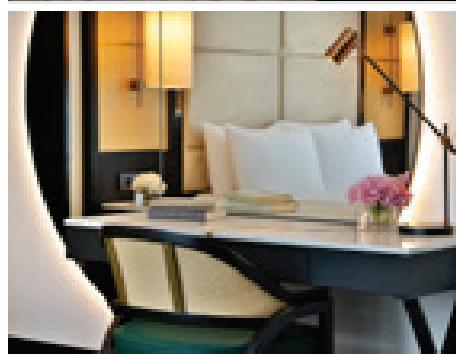
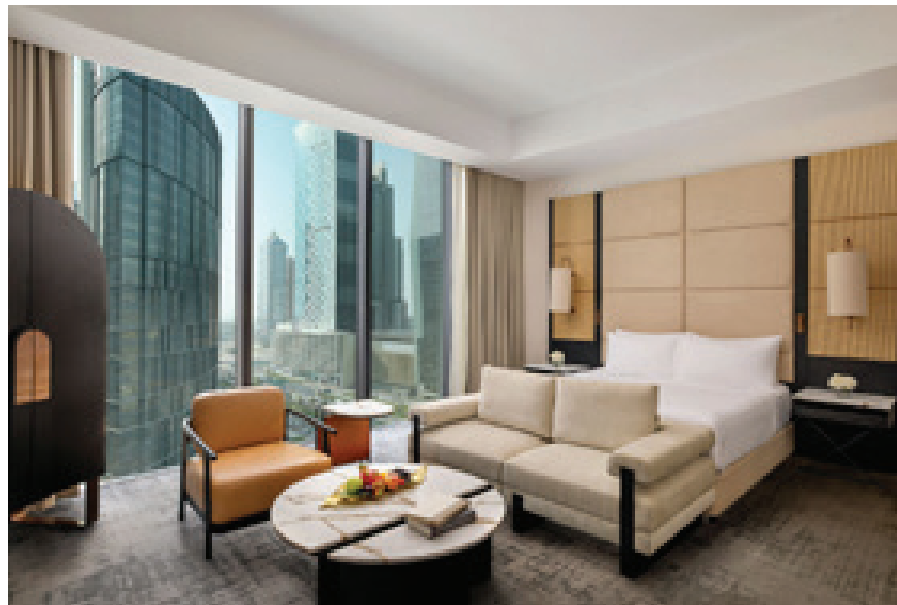


Luxury City View Room with Balcony

Experience the pulse of the city from above with this spacious Business Bay hideaway. Refresh in your tub or rain shower before spending the day exploring Dubai. Reconnect on your return to your room with super speed WiFi for scrolling as you recline on your private balcony.

Size: 52 sq. m / 560 sq. ft
Occupancy: 2 Adults + 2 Children
Bed Type: King bed or twin bed

City view
 Private balcony
 Floor-to-ceiling windows
 Elegant, relaxing décor
 Work desk with chair
 Relaxing sofa
 Separate tub
 Walk-in rain shower
 Flat TV & Chromecast
 Tea & coffee making facility
 Refreshment centre
 Complimentary Wi-Fi



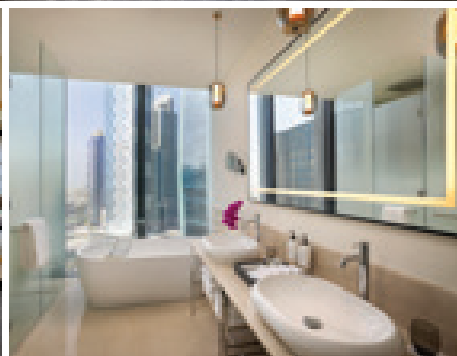
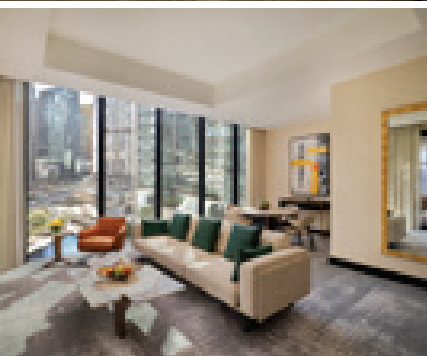


Superior Suite

Wake up to sunrise reflecting off the city or step onto your balcony for a wider perspective. Stretch out in your living area or sit around the dining table for a shared meal. Your contemporary suite is ideal for a family getaway in the city. Soak in a full-length tub after your Dubai sightseeing is complete.

Size: 115 sq. m / 1237 sq. ft
Occupancy: 3 Adults + 1 Child
Bed Type: King bed

Private balcony
 Living and dining area
 Floor-to-ceiling windows
 Elegant, relaxing décor
 Work desk with chair
 Relaxing sofa
 Separate tub
 Walk-in rain shower
 Flat TV & Chromecast
 Tea & coffee making facility
 Refreshment centre
 Complimentary Wi-Fi

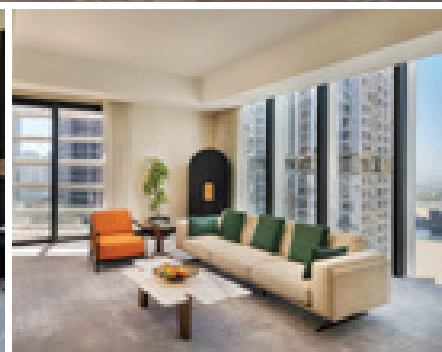
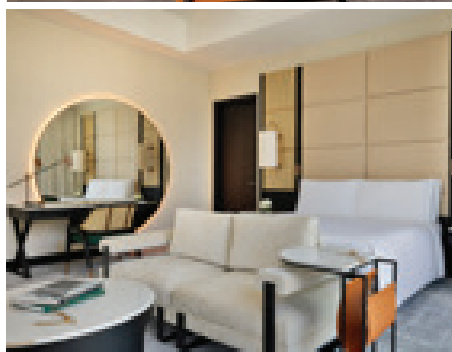


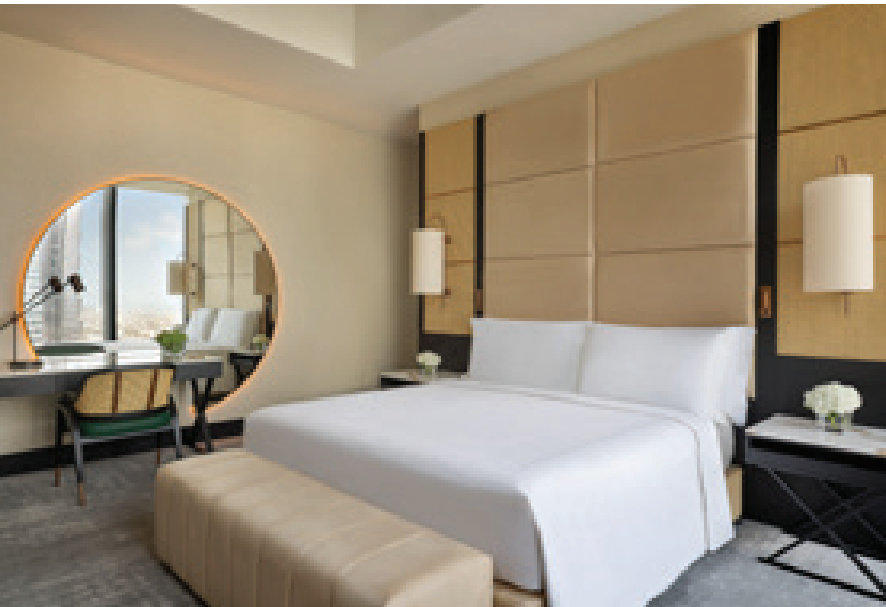
Deluxe Suite

Choose suite style in the city with a balcony that overlooks Dubai. Unwind in your separate lounge where you can offer guests a variety of libations from the modern refreshment centre. Your marble bathroom is the ideal place to freshen up before a night on the town. Retreat to an inviting bed as the city winds down beyond your floor-to-ceiling window.

Size: 135 sq. m / 1453 sq. ft
Occupancy: 3 Adults + 1 Child
Bed Type: King bed

Private balcony
 Living and dining area
 Floor-to-ceiling windows
 Elegant, relaxing décor
 Work desk with chair
 Relaxing sofa
 Separate tub
 Walk-in rain shower
 Flat TV & Chromecast
 Tea & coffee making facility
 Refreshment centre
 Complimentary Wi-Fi



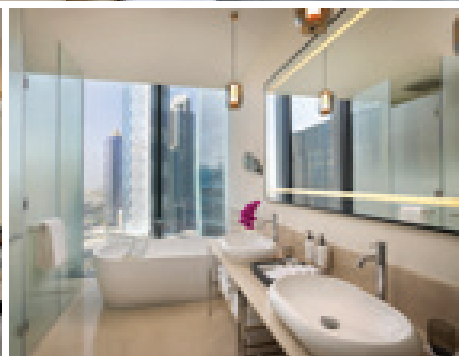


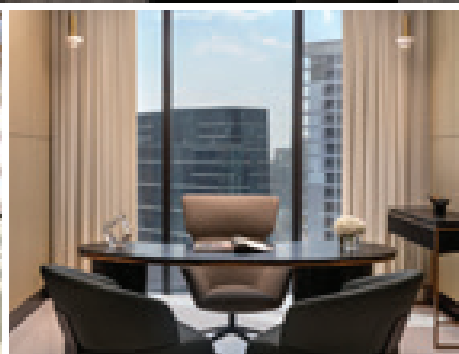
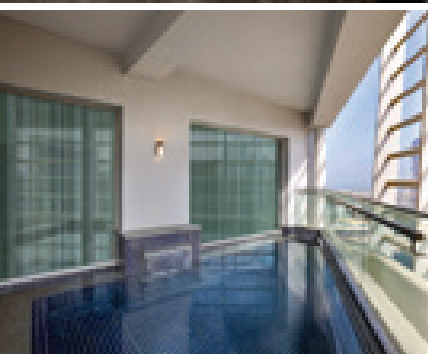
Luxury Suite

Take time out from exploring the city to enjoy all the modern comforts your central Dubai hotel has to offer. Enjoy a morning coffee on your balcony or at the dining table in your separate living area. Sink into a bath full of bubbles watching the skyscrapers light up after sunset. Thoughtful luxuries abound in these recently renovated suites.

Size: 184 sq. m/ 1981 sq. ft
Occupancy: 3 Adults + 1 Child
Bed Type: King bed

Private balcony
Living area
Dining area
Floor-to-ceiling windows
Elegant, relaxing décor
Work desk with chair
Relaxing sofa
Separate tub
Walk-in rain shower
Flat TV & Chromecast
Tea & coffee making facility
Refreshment centre
Complimentary Wi-Fi





Anantara Royal Suite with Pool

Host a relaxed family holiday in central Dubai with the pinnacle of suite living. Slip into your private plunge pool for cool moments overlooking the city lights. A welcoming, spacious lounge and light-filled dining area are perfect for sharing meals. From this towering perch, marvel at uninterrupted views of famous architecture as you recline in lavish luxury.

Size: 235 sq. m/ 2530 sq. ft
Occupancy: 3 Adults + 1 Child
Bed Type: King bed

- Private balcony
- Private plunge pool
- Living area
- Dining area
- Floor-to-ceiling windows
- Elegant, relaxing décor
- Work desk with chair
- Relaxing sofa
- Separate tub
- Walk-in rain shower
- Flat TV & Chromecast
- Tea & coffee making facility
- Refreshment centre
- Complimentary Wi-Fi

Dining



Ziya

Scintillating and elevated signature destination

Sample dishes from across the globe at our signature dining destination. Start the day with breakfast served from our tempting live stations, then meet for delicious fare at this thriving lunchtime business hub. Every evening, discover hallmark and speciality dishes.

Opening hours: 7:00 am to 11:00 pm

Cuisine: International

Capacity: 148

Mood Bar

Gather with colleagues or friends in a curated green space that oozes relaxation. Select from the top shelf, share stories and unwind in our oversized chairs that welcome you in from the rush of the city. Live music and expertly crafted cocktails will ease your evening until bed beckons.

Opening hours: 12:00 pm to 2:00 am

Capacity: 30



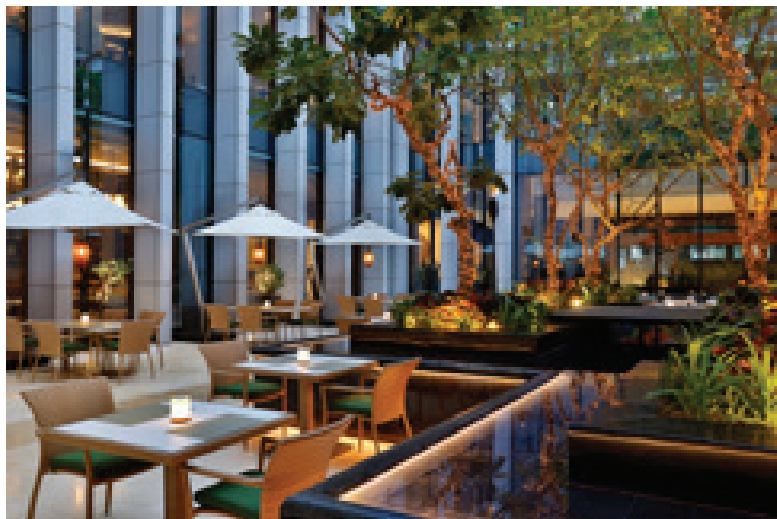
The Lobby Lounge

Fresh brews and handcrafted pastries are served in our plant-filled space where you can grab and go or pause and linger. Drop in any time to refuel or quench your thirst and find a friendly team member happy to meet your needs.

Opening hours: 8:00 am to 2:00 am

Cuisine: Light bites, high tea, drinks, and snacks

Capacity: 26



Courtyard

Escape to our bright courtyard and savour delicious themed dinners and refreshing beverages, expertly crafted by our team.

Opening hours: 7:00 am to 1:00 am

Pool Bar

Both adventurous and conservative tastes are catered for in our tropical poolside haunt. Graze on guilty pleasures from your lounge, or pull up a stool to listen to music and sip on creative coolers.

Opening hours: 9:00 am to 9:00 pm

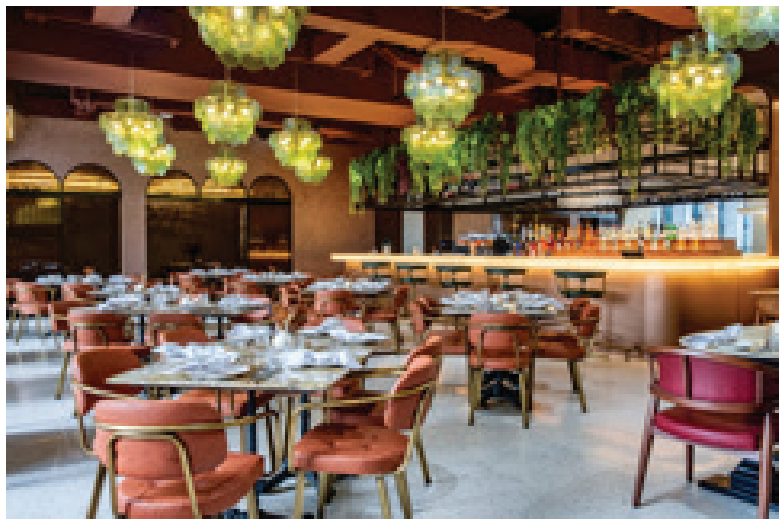


In-Room Dining

Dine at your convenience in the privacy of your own room or suite and enjoy your meal with spectacular cityscape views in a space that is completely yours. Order any time, night or day, and have your favourite dishes and drinks delivered directly to your door.

Opening hours: 24 hours





Girl & the Goose

Have you visited Downtown's finest supper club yet. Girl & the Goose bringing the soul of Central American food to an intriguing new spot that invites you to experience the inspirations of Nicaraguan Chef Gabriela Chamorro.

Delight in a modern take on Mesoamerican culinary memories, celebrating heritage while sprinkling the influences the chef has picked up while travelling the globe.

Opening hours: 12:00 pm to 1:00 am

Cuisine: Central American

Capacity: 135

Punjab Grill

Immerse yourself in the lavish flavours and fragrances of the Punjabi Royal Court in the open kitchen of our speciality restaurant. Sample small plates and rich curries as master chefs bring innovation to tradition and showcase the bold and the balance of Indian cuisine.

Opening hours: 11:30 am to 11:30 pm

Cuisine: Indian

Capacity: 70



Kimura-ya

Experience the flavours of Japan in the heart of Dubai. Design your dining from the curated menu of Chef Kohei Kobayashi in the cutting-edge interiors of Mayuka Kojima. Izakaya-style dining, without borders, from the first Kimura-ya restaurant in the UAE.

Opening hours: 12:00 pm to 12:00 am

Cuisine: Japanese

Capacity: 60

Meetings and events

Anantara Downtown Dubai offers a contemporary setting for business gatherings in the heart of Business Bay. Our twelve recently refreshed venues feature bright interiors and state-of-the-art technology, supporting productive meetings and events of any scale.

The Mirage Ballroom accommodates up to 550 delegates, complemented by eight meeting rooms and an executive boardroom, making the hotel ideal for team-building sessions, annual reviews, and board meetings. For more distinctive occasions, bespoke events can also be hosted at the poolside or in the courtyard, welcoming up to 100 guests.





CAPACITY CHART

Rooms	Cabaret	Theatre	Classroom	U-Shape	Boardroom	Banquet/ Seated	Area (sq.m)	Area (sq.ft)	Height (m)
Mirage	256	550	340	-	96	320	558	6006	6,5
Mirage 1	64	120	63	40	34	80	195	2099	6,5
Mirage 2	72	180	84	36	44	90	168	1808	6,5
Mirage 3	72	180	84	40	44	110	195	2099	6,5
Aspire	-	-	-	-	8	-	38	409	2,7
Aim	-	-	-	-	8	-	31	334	2,7
Ascend	-	-	-	-	8	-	37	398	2,7
Altitude	30	56	30	27	25	30	76	818	2,7
Aali	-	-	-	-	6	-	31	334	2,7
Aurora	-	-	-	-	19	-	51	549	2,7
Altair	-	-	-	-	6	-	24	258	2,7
Apex	20	25	21	-	19	-	50	538	2,7
Zenith	40	70	-	-	30	50	125	1345	2,7
Courtyard	-	-	-	-	-	100	497	-	-
Poolside	-	-	-	-	-	100	985	-	-
Yoga Deck	-	-	-	-	-	50	122	-	-

Anantara Spa

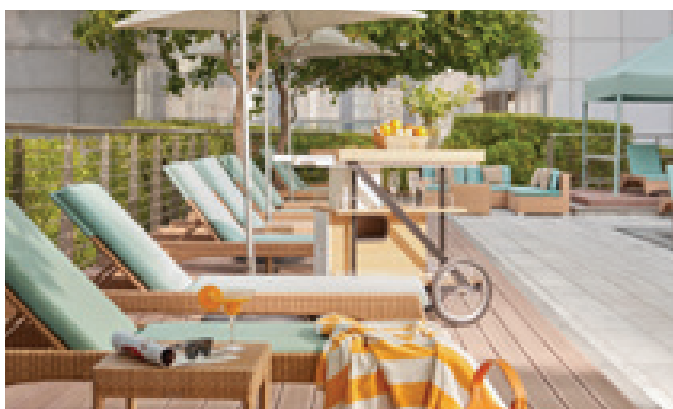
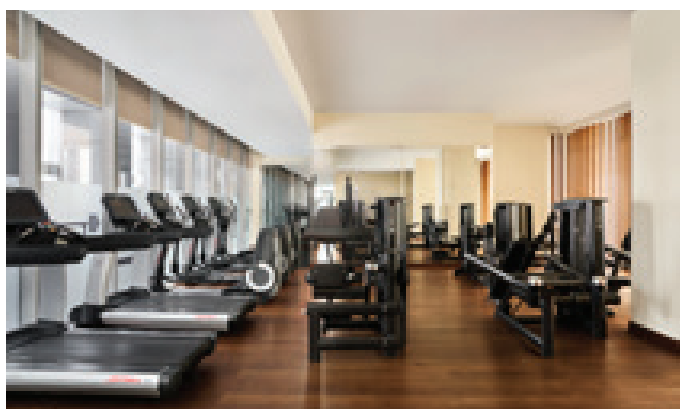
Indulge in a carefully crafted journey of relaxation at Anantara Spa.

Revive, refresh, and rejuvenate with signature treatments from talented therapists in the heart of downtown Dubai. Soothe your mind, body, and soul, and take a new freshness into your day.

Luxurious indoor treatment rooms

Opening hours: 11:00 am to 8:00 pm





Recreation and leisure

Take time to make the most of our in-house leisure facilities throughout your stay.

- Temperature-controlled outdoor pool
- Anantara Spa
- Fully-equipped fitness centre



Other

Anantara Downtown Dubai Hotel is a 20-minute drive from Dubai International Airport and 45 minutes from Al Maktoum International Airport.

Flight Services: Dubai International Airport (DXB) and Al Maktoum International Airport (DWC) offer direct and connecting flight services to destinations all over the world.

Voltage: 220 - 240 AC, 50 Hertz

Currency: **₪** - Dirham
US\$ 1 = **₪**3.67 fixed rate

Time Zone: GMT plus 4 hours

Climate: The United Arab Emirates has a desert climate, characterised by hot, sunny summers and mild winters with very little rain. Natural fibres and breathable clothing are recommended. Temperatures range from 17°C to 26°C in winter and 30°C to 42°C in summer.



ANANTARA DOWNTOWN DUBAI HOTEL

P.O. Box 71847, Business Bay, Dubai, United Arab Emirates
T +971 4 444 1444 | E downtown.dubai@anantara.com | R reservations.adtd@anantara.com

ANANTARA.COM

UNFORGETTABLE JOURNEYS