



ANANTARA  
DESARU COAST  
RESORT & VILLAS



## ANANTARA DESARU COAST RESORT & VILLAS FACT SHEET

Desaru Coast is a natural paradise of 17 km of golden beach overlooking the South China Sea. Here, your days are filled with adventure or tranquility, whether lazing by the ocean, teeing off on world-class golf courses, or splashing at the waterpark.

This first Anantara in Malaysia is a luxury hideaway modelled on a traditional fishing village. Low-rise buildings are set amidst lush gardens and tranquil lagoons. Take in the most magnificent of ocean sparkling views from private beach residences, the infinity pool or the observatory bar. The resort comprises of deluxe guest rooms in low-rise buildings that overlook the gardens, lagoon and ocean; stand-alone luxury one- and two-bedroom pool villas; and expansive three- and four-bedroom residences that offer guests utmost privacy with an infinity pool, full kitchen and chef and butler service.

Designed by Singapore architect firm WOW Architects & Warner Wong Design and interiors by Environment Design Consultants from Malaysia, the resort's architectural design resembles traditional Malay buildings and is adorned with indigenous materials and fabrics such as woven textiles; renowned Malaysian wicker elements; and silhouettes of traditional Malay crafts.



## LOCATION

Desaru Coast, Malaysia's newest resort destination, is located on the southern tip of the peninsula near Singapore. A luxury integrated development, the coastal area is famous for its prime attractions including The Els Club designed by Ernie Els and Desaru Coast Adventure Waterpark.

Ideal for weekend getaways from Singapore, located a two hours' drive or short ferry ride from downtown. The nearby Senai International Airport in Johor Bahru receives multiple daily flights from Kuala Lumpur, as well as international flights from around Asia.

Management:  
Ownership:  
General Manager:

MINOR Hotels  
MINOR Hotels & TARH  
Christian Gerart  
[cgerart@anantara.com](mailto:cgerart@anantara.com)



## ACCOMMODATION

### Premier Room

At 49 sqm, Premier Rooms are spacious and airy, with hardwood floors underfoot lending a cool, tropical feel. Take your morning espresso out on the balcony. Soak in the tub or cool off under the rain shower.

### Premier Corner Room

Corner rooms offer the best of tropical living, with a wrap-around balcony overlooking serene gardens. Breakfast out in the cool morning air, sinking into an oversized daybed with a good book afterwards.

### Deluxe Sea View Room

Deluxe rooms are located on higher floors, with views beyond the garden to the azure South China Sea. Take in the inspiring sight from the comfort of your plush bed or your balcony daybed.

### Deluxe Sea View Corner Room

Sea view corner rooms boast spacious outdoor living, with a wrap-around balcony facing the magnificent views. Laze on the daybed and take in the ocean breeze.

### One-Bedroom Lagoon Pool Villa

Pool villas are designed for romance, with spaces for two to hide away in. Wake up to tranquil lagoon views. Move downstairs for lazy days by the pool and evenings in with an in-villa barbecue available upon request.

### Two-Bedroom Lagoon Pool Villa

The two-storey villa is perfect for families, with an ensuite master bedroom upstairs and twin downstairs. Spend time together splashing in the pool, dining in the gazebo, and watching movies in the living room.

## Three-Bedroom Beach Residences

Beach residences are the epitome of luxury, with sleek, modern design, an infinity pool set in lush garden, and a prime position just steps from the ocean. A personal chef and butler are available upon request throughout your stay. Enjoy a barbecue by the pool with a bottle or two from your wine fridge.

## Four-Bedroom Beach Residences

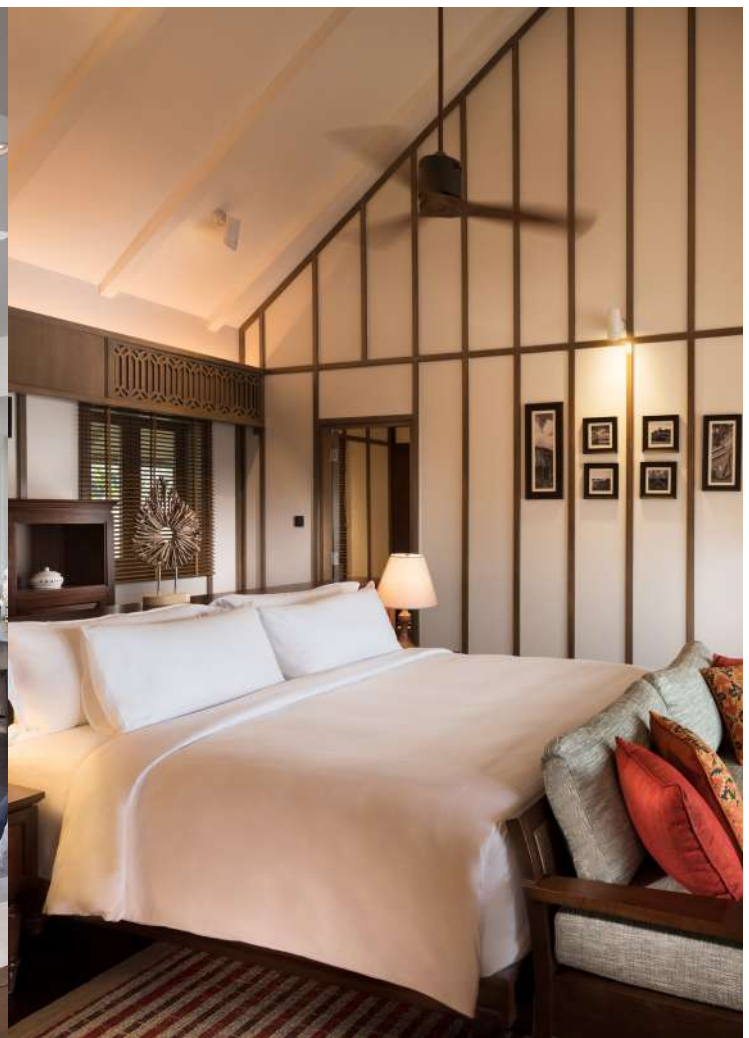
Our most luxurious residence is ideal for families or entertaining. Wander to the beach for a morning stroll. Host dinners in the living room with personal chef, available upon request, followed by cocktails served poolside by your butler.

## Room & Villas Features

- Luxury accommodation with Resort & Sea Views
- Sofa Bed for child 12 years and under
- Luxury Bathroom amenities
- Lavish bathroom with Rain shower and bath tub
- Nespresso machine
- Private plunge pool overlooking the lagoon
- Wide sundeck with gazebo
- Complimentary Minibar

## Residences Features

- Private butler
- Complimentary minibar
- Wine fridge
- Infinity pool
- Nespresso machine
- State-of-the-art kitchen (optional private chef)
- Seafront position
- Wide deck with gazebo





ROOM TYPE	TOTAL		ROOM SIZE (M)	ACCEPT ROLLAWAY	OCCUPANCY	CONNECTING ROOMS
Premier Room	22 units		49	Not applicable	2A+1C	Available
	17 king	5 twin				
Premier Corner Room	8 units		50	Not applicable	2A+1C	-
	8 king	-				
Deluxe Sea View Room	44 units		49	Not applicable	2A+1C	Available
	39 king	5 twin				
Deluxe Sea View Corner Room	16 units		50	Not applicable	2A+1C	-
	16 king	-				
One-Bedroom Lagoon Pool Villa	6 units		110	Applicable	2A+1C	-
	1 king					
Two-Bedroom Lagoon Pool Villa	7 units		164	Applicable	4A+1C	-
	1 king and 1 twin					
Three-Bedroom Beach Residences	3 units		288	Applicable	6A+3C	-
	2 king and 1 twin					
Four Bedroom Beach Residences	2 units		380	Applicable	8A+4C	-
	3 king and 1 twin					
TOTAL	108 Accommodations					



## RESTAURANTS AND BARS



### Turmeric

Turmeric showcases the overlapping flavours of Northern Malaysia and Southern Thailand. Start each day with a casual breakfast buffet overlooking the lagoon pool. Delve into the spice and fragrance of the region with signature delicacies for lunch and dinner.

Capacity: 84 seats indoor, 52 seats outdoor



### Sea.Fire.Salt.

Our signature seafront grill serves up fresh seafood and premium meats sizzled to perfection on charcoal grill. Embellish succulent flavours with rare and homemade salts from around the world. Sample a list of organic wines.

Capacity: 56 seats



### Infinity Bar

Lounge on sunbeds with a cocktail in hand, as mixologists play with classic recipes and new creations drawing on the area's tropical bounty. Tapas and casual bistro fare are offered throughout the day. Chill with poolside beats and shisha, watching the waves roll in.

Capacity: 52 seats



## Lagoon Pool Bar

The lagoon pool at the heart of the resort is ideal for all-day lounging. Sunshine butlers make the rounds with sunscreen, cold towels and popsicles. Enjoy a cool coconut or pizza hot from the oven.

Capacity: 70 sunbeds, 10 bar stools



## Observatory Bar

Perched over the resort with 360° views, the Observatory Bar offers a peaceful retreat with its Al Fresco setting. Enjoy a platter of sweet and savoury bites, a traditional afternoon tea, or an evening of premium Japanese whiskies and Cuban cigars.

Capacity: 32 seats



## The Lounge

Drop by The Lounge for your daily kick of caffeine, whether cold brewed or piping hot. Settle into a daybed overlooking the reflection pond and sample an array of traditional Malaysian sweets. Grab a book from the library located next to The Lounge for your reading full-stop.

Capacity: 24 seats



## Dining by Design

Our signature private dining experience epitomes romance, with a candlelit table on a windswept stretch of beach. Design the perfect menu with your chef for the evening, which is then served up by your butler.

Capacity: Minimum of 2 persons, max of 12 persons



## Spice Spoon

A dash of lime, a handful of chili – learn how to create your favourite Malaysian and Thai recipes with a step-by-step cooking class. Optional tour of the local fruit farm led by the chef is available for you to experience and return to the resort armed with fresh ingredients. Enjoy your creations for lunch.

Capacity: Minimum of 2 persons, max of 8 persons



## CONFERENCE AND MEETING FACILITIES

Reward your team with corporate retreats in a beach setting only a short hop by ferry from Singapore. Brainstorming sessions are followed by teambuilding on the beach and cocktails overlooking the ocean. Plan the ideal event, with a professional Anantara coordinator to arrange all the details.

MEETING ROOMS	AREA	DIMENSION (WXLXH)	THEATRE	CLASS ROOM	U-SHAPE	BOARD ROOM	BANQUET 10	COCKTAIL	H-SQUARE
	M <sup>2</sup>	METRES							
Johor Ballroom	208	9.25x22.45	168	72	42	20	120	160	24
Johor I and II	106	9.25x11.15	84	36	24	16	60	80	18
Lebam	42	5.91x7.11	-	-	11	10	-	-	14
Santi	26	5.91x4.4	-	-	6	8	-	-	10

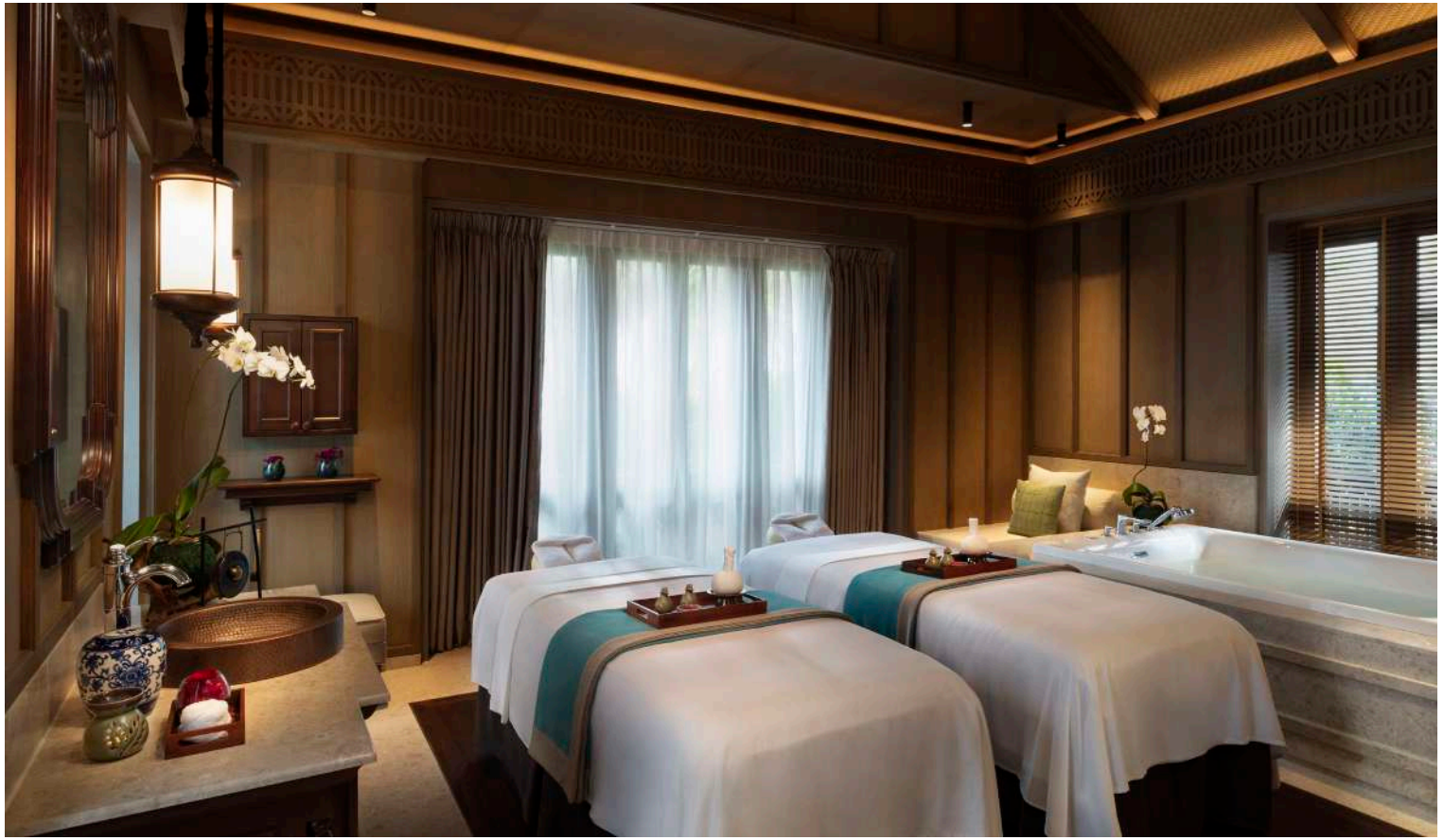
## WEDDINGS AND SPECIAL OCCASIONS

Exchange vows on a deserted stretch of beach. Banquet under the stars. Dance the night away in a ballroom. Destination weddings come to life at Desaru Coast with each detail taken care of by your Anantara wedding planner.

## LEISURE & FACILITIES

- Infinity beachfront swimming pool  
*Pool size (M): L 25.85, W 8.71 & D 1.2m*  
*Operation hour: 7.00 am to 7.00 pm*
- Luncur Ombak Teens' club  
*Operation hour:*  
*Sunday to Thursday: 10.00 am to 7.00 pm*  
*Friday & Saturday: 10.00 am to 9.00 pm*
- 24-hour fitness centre
- Scheduled resort activities
- Water sports\*
- Lagoon swimming pool  
*Pool size (M): L 38.9, W 11.5 & D 1.2*  
*Operation hour: 7.00 am to 7.00 pm*
- Layang-Layang Kids' club  
*Operation hour:*  
*Sunday to Thursday: 10.00 am to 7.00 pm*  
*Friday & Saturday: 10.00 am to 9.00 pm*
- 24-hour library
- Prayer room
- Golf courses\*

\* operated by third party



## ANANTARA SPA

Originating in Thailand, traversing the globe, and now arriving on Malaysia's golden shores, Anantara Spa's award-winning touch heals body, mind and soul. Each treatment is bespoke, luxurious, and holistic, with signature experiences that are rooted in indigenous healing traditions. Drop in for an express beauty treatment or linger for a spa journey for all the senses.

### Signature Treatment

#### Anantara Signature Massage

Our signature blend of oil, combined with purpose designed movements, stimulates the circulation, promotes deep relaxation and restores the flow of energy, or prana, along the meridian lines.

#### The Roots of Malaysia

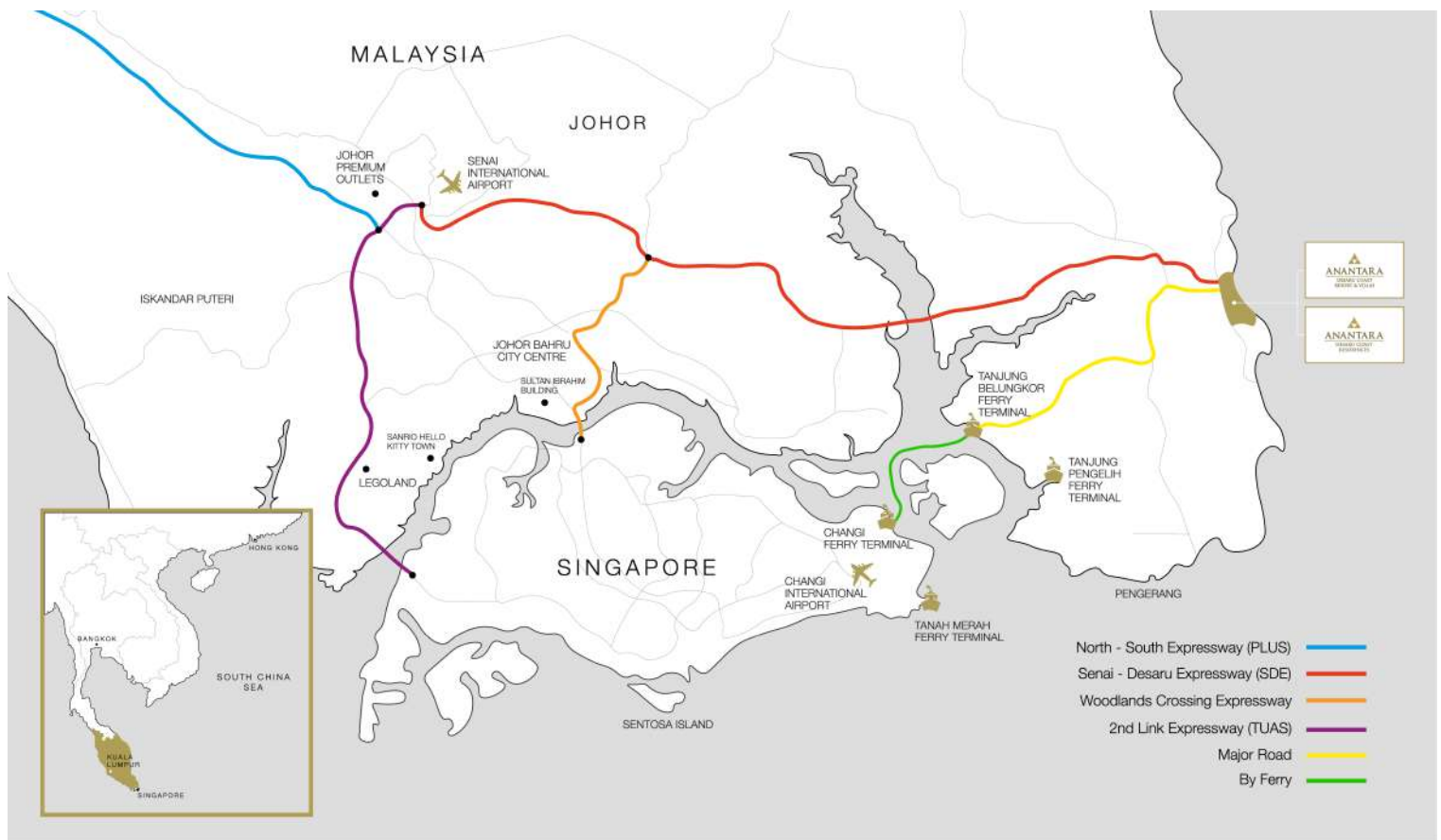
A signature massage that combines the healing traditions and techniques of Malaysia. Your treatment begins with a foot soak and guided breathing techniques. This is followed by full body palm work combined with light foot pressure points and passive stretching.

### Spa Facilities

- 6 treatment rooms with en-suite bathroom
- Relaxation area
- Shower facilities
- Premium branded products

Opening hours: 10.00 am – 10.00 pm

In-room massages: 10.00 am – 7.00 pm, with advance reservations and surcharge may apply



## AIRPORT TRANSPORTATION / ACCESS

Seize the moment and get away to golden shores in the south of Malaysia. By Car

- From Singapore, the drive takes two hours including potential waiting time at the border.
- From Johor Bahru via the E 22 the drive is one hour.
- From Kuala Lumpur, the journey via the North South Expressway takes approximately 4 hours.

By Plane

- From Singapore's Changi Airport, take approximately 2 hours' drive, including potential waiting time at the border. Airport transfers can be booked via the resort for individual or group travel.
- Domestic flights from Kuala Lumpur take around 1 hour.
- Daily domestic and international flights arrive at Senai International Airport, 85 km away, approximately 1 hour drive to Desaru Coast.

By Boat / Ferry

Take the ferry from Singapore's Changi Ferry Terminal to Tanjung Belungkor. It is then a 30-minute drive to the resort. Ferries run on a set schedule, with up to 18 crossings per week, depending on the season.

**Voltage** 220 - 240AC, 50 Hertz

**Currency** Malaysian Ringgit (RM) | US\$ 1 = RM 4.21

**Time Zone** GMT plus 8 hours

**Climate** Tropical, with an average temperature of 30°C, and monsoon from end of November till early of February.



## CONTACT

Address:

Persiaran Pantai, Desaru Coast, 81930 Bandar Penawar,  
Johor Darul Ta'zim, Malaysia

Telephone:

+60 7 8280 888

Facsimile:

+60 7 8280 999

Email:

[desaru@anantara.com](mailto:desaru@anantara.com)

Web Address:

[anantara.com/desaru-coast](http://anantara.com/desaru-coast)