

## DISCOVER CHIANG MAI'S TRADITIONAL CULTURE FROM RIVERSIDE LUXURY.

Step through the striking wooden exterior and discover a world of indulgence with your stay at Anantara Chiang Mai Resort. An oasis of calm, this refuge provides the perfect access point for exploration of the city's hidden treasures and surrounding natural wonders. Combining contemporary Thai elements with the site's colonial-era heritage, this luxurious sanctuary is the ideal place to experience the majesty of Thailand's charming northern city or simply relax and let the world go by.

Address:	123 Charoen Prathet Road, Changklan, Muang, Chiang Mai 50100, Thailand
Telephone:	+66 (0) 5325 3333
Facsimile:	+66 (0) 5325 3352
Central Reservations:	+66 (0) 2365 9110
Central Reservations Email:	<a href="mailto:reserveanantara@anantara.com">reserveanantara@anantara.com</a>
Email:	<a href="mailto:chiangmai@anantara.com">chiangmai@anantara.com</a>
Web Address:	<a href="http://chiang-mai.anantara.com">chiang-mai.anantara.com</a>



## LOCATION

Nestled on the banks of tranquil Mae Ping River and located on the former British Consulate site, Anantara Chiang Mai Resort is conveniently situated a 5-minute walk to the famous Night Bazaar, 10 minutes from the traditional attractions of the old moated city and just six kilometres from Chiang Mai International Airport (CNX). The city is at your doorstep, allowing exploration by bike, private car or on foot.

Management:

Anantara Hotels, Resorts & Spas

Ownership:

Pacific Hotel Chiangmai Co., Ltd.

General Manager:

Syahreza Ishwara

[sishwara@anantara.com](mailto:sishwara@anantara.com)

Director of Sales & Marketing:

Chompunut Israsena Na Ayudhya

[chompunut\\_is@anantara.com](mailto:chompunut_is@anantara.com)



## ACCOMMODATION

With a range of choices, the 84 sleekly designed rooms and suites are in perfect harmony with the lush green surrounds. Each boasts a balcony or terrace, where guests can relax on their oversized daybed and take in the tranquillity of manicured gardens or the river.

Bask in the morning sunlight thanks to floor-to-ceiling windows. Feel at home in the contemporary décor and stylish furnishings, decorated in neutral hues with flourishes of authentic luxury and distinctive artisanal crafts.

### Deluxe Room

These delightful rooms are elegantly designed with comfort and style in mind. Take in views of the landscaped gardens from your private balcony. Enjoy a tea or coffee and take in the fresh morning air. Return from a day of exploration to make use of the indulgent rain shower or soak in the expansive tub.

### Deluxe River View Room

Let a cool river breeze welcome you as you enjoy the view from the comfort of your private balcony. After reclining on your cushioned daybed, unwind even further with a soothing soak in the romantic oversized bathtub. Sleep in a sumptuous bed and when you wake up, raise the curtains with the press of a bedside button for a refreshing morning view to do it all over again.

### Kasara Suite

Unravelling over 105 square metres, Kasara Suites epitomise space and elegance. Enjoy terrace views of the verdant gardens or share meals at the outdoor dining area. Inside, the bedroom, lounge and bathroom areas offer elegant Thai accents matched with a contemporary aesthetic like a generous sized tub and his and her basins. Complete your experience by taking advantage of a range of exclusive benefits including culinary temptations throughout the day at Kasara Executive Lounge.

### Kasara River View Suite

Offering all the luxuries of a Kasara Suite but enhanced by vistas of the enchanting Mae Ping River, these suites are the ultimate indulgence. Watch the river come to life in the morning, enjoy a coffee and read a book on your inside or outside daybed. Savour a meal at the dining table, or fold back the bathroom doors and soak in the deep terrazzo tub, gazing over the illuminated river banks. To make your stay even more indulgent from arrival, enjoy a host of exclusive privileges, accompanied by Kasara Executive Lounge temptations every day.



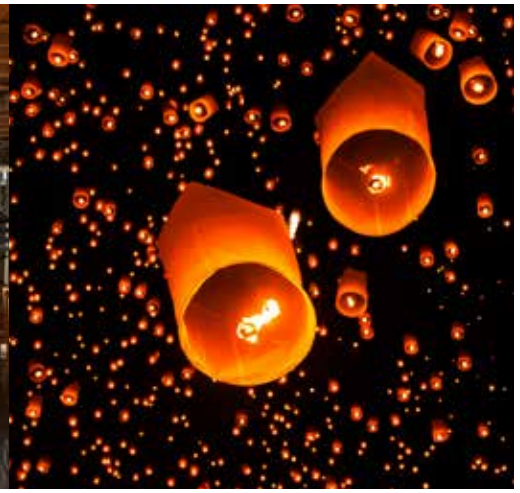
## ROOM FEATURES

### Deluxe Rooms

- 50 sqm
- Balcony with a double daybed, table and chairs
- WiFi
- 40" flat screen LED and high-definition television
- Mini bar
- Coffee and tea making facilities
- Writing desk
- Ample closet space
- Electric blackout curtains
- In-room safe equipped with power outlet
- Luxury bathroom with a rain shower and deep terrazzo bathtub
- Hair dryer
- Yoga mat

### Kasara Suites

- 105 sqm
- Private courtyard entrance
- Balcony with a double daybed, table and chairs
- Large open plan bathroom with a rain shower and deep terrazzo bathtub
- Dining area
- Indoor daybed
- WiFi
- 48" flat screen LED and high-definition television
- Coffee machine
- Tea making facilities
- Writing desk
- Ample closet space
- Electric blackout curtains
- In-room safe equipped with power outlet
- Hair dryer
- Yoga mat
- Wine chiller



## KASARA SUITE BENEFITS

- Private check-in and check-out at Kasara Executive Lounge or in-suite
- Full access to Kasara Lounge
- International breakfast buffet at Kasara Executive Lounge or The Restaurant
- All day refreshments of non-alcoholic beverages, tea and coffee
- Guest Relation Service from 7.00 am – 11.00 pm
- Evening cocktails, wine and canapés at Kasara Executive Lounge
- WiFi and laptop computer facility
- Laundry service of up to seven pieces per day *(excludes dry cleaning and express service)*

ROOM TYPE	TOTAL		ROOM SIZE (SQM)	BALCONY SIZE (SQM)	ACCEPT ROLL AWAY	MAX OCCUPANCY
Deluxe Room	40		50	7.5	No	2 Adults
	32 King	8 Twin				
Deluxe River View Room	12		50	7.5	No	2 Adults
	8 King	4 Twin				
Kasara Suite	20		105	15	Yes	3 Adults or 2 Adults + 2 Children
	13 King	7 Twin				
Kasara River View Suite	12		105	15	Yes	3 Adults or 2 Adults + 2 Children
	11 King	1 Twin				
TOTAL	84					

## GUEST SERVICES

- 24 hour guest services
- Laundry service
- Library with internet access
- 24 hour security
- Boutique
- Beauty salon with hairdresser and manicure or pedicure services
- Anantara Spa
- DVD library
- Diversions
- Indoor games
- Foreign exchange service
- Wedding services

# FLOOR PLANS

Kasara Suite  
Kasara River View Suite



Deluxe Room  
Deluxe River View Room





## DINING



### The Restaurant

Commence your day with a breakfast buffet that promises something for every palate. Enjoy tropical fruits, juices and a selection of local specialities and international favourites. Revisit for lunch or dinner and experience a decadent grill menu or choose between a selection of Indian specialities enhanced by traditional tandoor oven in the elegant dining room or peaceful riverside deck.

**Opening hours**    Breakfast: 6.30 am – 10.30 am  
                                 Lunch: 12.00 noon – 3.00 pm  
                                 Dinner: 6.30 pm – 10.30 pm

**Cuisine:**                    International and grill cuisine

**Seating capacity:** 86



## The Lobby Lounge

Bring together friends and family or enjoy a moment of quiet contemplation in this open, airy space overlooking the colonial house. Daybeds with plumped cushions offer a comfy retreat to relax with a beverage or quick snack during the day and a perfect position to enjoy live traditional khim music at dusk.

Opening hours: 8.00 am – 10.00 pm  
 Cuisine: Refreshments and light snacks  
 Seating capacity: 40



## The Service 1921 Restaurant & Bar

Conjuring a surreal illusion of British secret service intelligence, The Service 1921 Restaurant & Bar's Thai, Chinese Szechuan and Vietnamese culinary offerings are created by expert chefs from each cuisine. Enjoy the elegance of the private dining room, wine tastings and dinner parties in the wine cellar, single malts sipped in the whiskey tasting room and Cuban cigars presented by the Cigar Aficionado.

Opening hours: Lunch 11.30 am – 2.30 pm  
 Dinner 6.00 pm – 11.00 pm  
 Asian Light Bites 11.30 am – 1.00 am  
 Cuisine: Chinese Szechuan, Thai and Vietnamese  
 Seating capacity: 110



## Signature Tea Experiences at The Service 1921

Enjoy culinary classics, from gourmet pies and quiches, to scones with preserves and clotted cream, as well as an array of decorative desserts. Sip in comfort from a range of specialty teas and coffees in charming colonial style.

Opening hours: 2.00 pm – 6.00 pm  
 Cuisine: Afternoon Tea







## MEETING

Discover the art of perfect meetings and events, where contemporary style blends with colonial grace beside the scenic Mae Ping River.

With luxury accommodation, elite leisure facilities, well equipped meeting venues, tailored dining experiences and our personalised approach, business is an unexpected pleasure.

The meeting space is supported by multilingual secretarial services, complimentary high speed internet, video conferencing capabilities and the latest audio-visual equipment. Refresh and replenish with coffee breaks and gourmet luncheons on the peaceful outdoor deck along the Mae Ping, or inside the charming colonial building.

### The Meeting Room

Style meets function in this well-appointed 55 sqm venue. Host professional gatherings for between 30 and 49 delegates, with flexible seating arrangements including U-shape, classroom, open boardroom and theatre set up. Equipped with high speed WiFi and broadband internet access, video conferencing capabilities, multiple telephone lines, LCD and overhead projectors, along with good old fashioned flip charts and white boards, The Meeting Room also benefits from natural daylight and direct access to The Restaurant's extensive culinary experiences.

MEETING ROOMS	AREA		DIMENSION (WXLXH)		THEATRE	CLASS ROOM	U-SHAPE	BOARD ROOM	BANQUET 10	COCKTAIL	H-SQUARE
	SQM	SQ FT	METRES	FEET							
The Meeting Room	54	581	6x9x3	19.6x30x9.9	50	30	24	30	24	54	30



## WEDDINGS

At Anantara Chiang Mai Resort, inspired celebrations comprise flawlessly romantic occasions, from a surprise marriage proposal and the perfect wedding day, to a once-in-a-lifetime honeymoon or unforgettable anniversary.

Say “I do” in an exquisite setting with impeccable attention to detail. Let our iconic hotel in Chiang Mai be the perfect backdrop or your special day with a choice of elegant indoor and outdoor spaces to select between.

Picture a beautiful ceremony in manicured riverside grounds, a garden party beside the Mae Ping River with guests toasting cocktails to your union, and an evening of customised dining and entertainment enjoyed on a waterfront deck or in our delightful colonial house.

## LEISURE

- 34 metre riverside pool
- Anantara Spa
- Fitness centre and yoga
- Nature, culture and adventure experiences





## ANANTARA SPA

Experience the world of Anantara Spa and reward yourself with the lavish attention of our professional therapists. Choose from an extensive menu of trusted ancient wellness therapies from Thailand and across Asia. Relax afterwards on comfy loungers with refreshments and a view of our pool and the river.

Opening hours: 10.00 am – 10.00 pm (last appointment at 9.00 pm)

### SIGNATURE SPA TREATMENTS

#### Lanna Ritual (90 Minutes)

Begin with a pampering ritual to cleanse, reduce swelling, relax and refresh the feet and lower legs. Surrender to a full body massage combining healing plai massage oil with Thai, Burmese and Chinese techniques to enhance energy flow and overall wellbeing, ending with a mini pressure point facial. Awaken to a singing bowl, wash your hands in herbal and floral water to clear negative energy and make a wish with a golden heart Bodhi leaf.

Herbal Foot Bath Ritual, Warm Herbal Poultice and Mint Spray • Anantara Lanna Massage  
• Mindfulness Ritual • Refreshment

#### Essence of Anantara (200 Minutes)

Surrender to a sequence that offers a transformative awakening. Relax in a warm steam of therapeutic herbs that coaxes your mind to unwind and your pores to open. Purify and polish every inch of skin with a refreshing green tea exfoliant. Feel how purpose designed movements, reflexology and our signature oil blend combine to bring you deep relaxation and enhanced overall wellbeing.

Floral Foot Ritual • Thai Herbal Steam • Detoxifying Green Tea Scrub • Anantara Signature Massage  
• Refreshment

### SPA FACILITIES

- 5 luxurious individual treatment rooms with a steam shower and terrazzo bathtub
- 5 luxurious couple's treatment rooms with a herbal steam room, aromatic sauna and terrazzo bathtub
- Manicure and pedicure lounge
- Indoor relaxation lounge, overlooking the pool and river
- Rooftop outdoor relaxation deck, furnished with sun loungers, daybeds and umbrellas, with an elevated river view



## AIRPORT TRANSPORTATION

For a seamless arrival, an Anantara representative personally greets guests at Chiang Mai International Airport, followed by a transfer to the resort in a private car or van with WiFi connectivity.

## TRAVEL NOTES

**Voltage** 220 – 240AC, 50 Hertz

**Currency** Thai Baht (THB)  
USD 1 = THB 35\*  
\*rate subject to fluctuation

**Time Zone** GMT +7 hours

### Climate

November – February (Dry season): Temperatures range between 23°C to 31°C accompanied by refreshing winds. Natural fibres and breathable clothing are recommended.

March – May (Hot season): Between March and May the temperatures range from 30°C to 35°C. Natural fibres and breathable clothing are recommended.

June – October (Monsoon season): Temperatures range from 24°C to 31°C. Refreshing rain showers often last for only short periods before becoming sunny once again. Natural fibres, breathable clothing and light waterproofs are recommended.