



ANANTARA

CHIANG MAI RESORT

Discover riverside charm
in the heart of Chiang Mai



Gateway to the Lanna north

With its unique culture, verdant surrounds and laidback rhythm of life, Chiang Mai has beguiled travellers from far and wide for centuries. Located just a few minutes from the centre of the city and from the airport, Anantara Chiang Mai Resort immerses guests in all the locale has to offer, a boutique haven where heritage meets the contemporary overlooking the Mae Ping River.

WELCOME TO
ANANTARA CHIANG MAI RESORT





Accommodation

The resort's 84 rooms and suites are housed in a low-rise building wrapped around a garden courtyard. With sleek contemporary design, each boasts a feeling of space and serenity. Suites are exceptionally luxurious, with open living spaces and upgraded amenities. Suite guests enjoy exclusive Kasara privileges, including afternoon refreshments, social hours with cocktails and canapes, laundry service and a late check-out.



DELUXE GARDEN VIEW ROOM

Deluxe rooms bring the tranquility of the outdoors in, with sleek Zen lines and cool materials. Lounge on your daybed overlooking lush grounds. Unwind with in-room yoga or a soak in the tub. Enjoy thoughtful amenities and Anantara Spa products to enhance your stay.



DELUXE RIVER VIEW ROOM

Drink in views of the Mae Ping River from every angle. Open the curtains with the touch of a bedside button. Step out onto the balcony in the cool morning air. Soak in the bathtub with partition slid open to reveal views through floor-to-ceiling windows.



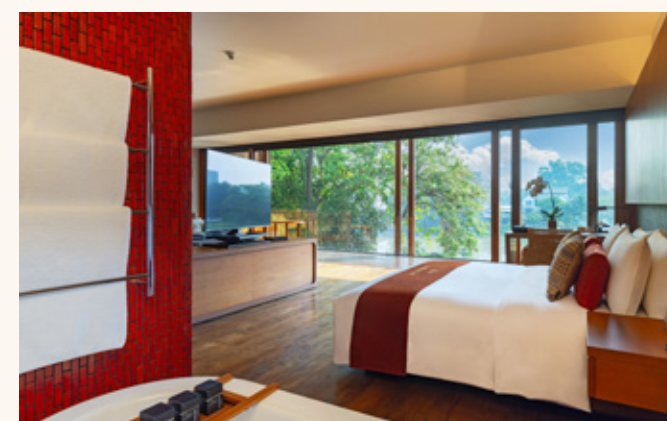
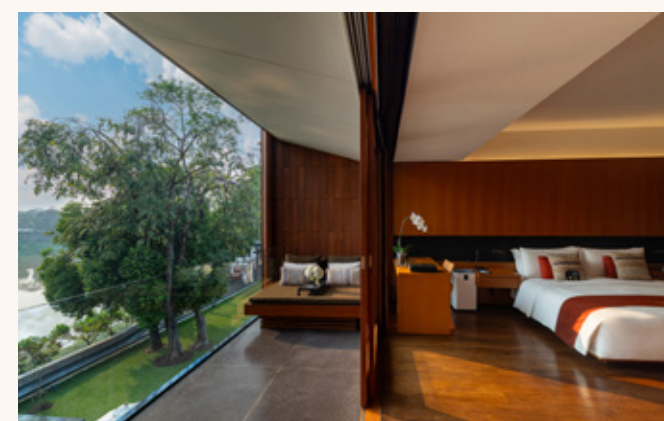
KASARA GARDEN VIEW SUITE

Kasara suites are spacious and sunlit, with open-plan living and dining spaces. Take your morning espresso out on the balcony. Unwind with a cocktail from your bar. Enjoy serene views as you laze on your outdoor daybed overlooking verdant garden.



KASARA RIVER VIEW SUITE

Our river view suites invite luxurious unwinding, indoors or out. Laze on one of two daybeds, with a freshly brewed espresso or glass of chilled wine in hand. Slide open floor-to-ceiling doors to enjoy the cool breeze off the water.



KASARA RIVERFRONT SUITE

These suites front the Mae Ping River, with magnificent views to be enjoyed from the bed, bathroom, indoor and outdoor lounging spaces adorned by Jim Thompson silks. Your entire stay with us is one of privilege, with a private check-in and the option of breakfast in bed.



KASARA POOL SUITE

Our most exclusive suite, with all the privileges above, has the added luxury of a plunge pool. Enjoy total privacy, delightfully hidden away amidst the lush foliage that surrounds, whether enjoying a floating breakfast, floating yourself in the cool water, or reading quietly in your softly billowing cabana.

ROOM FEATURES

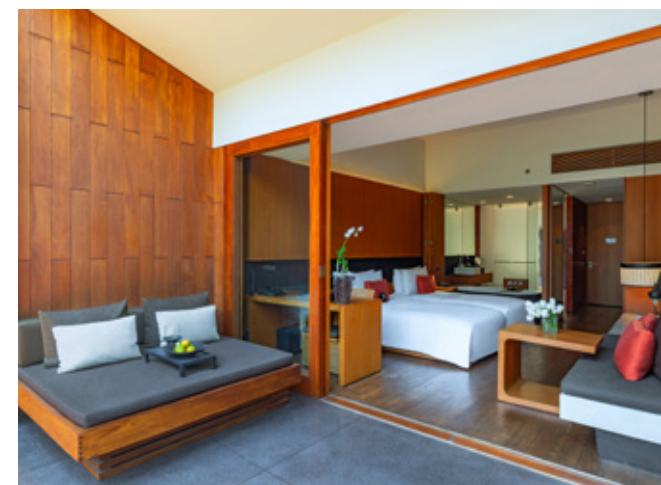
- King or twin beds with down duvet and pillows
- Writing desk
- Bathroom with rain shower and terrazzo tub with a view
- Private balcony or terrace with daybed, table and chairs
- 50" flat-screen HD TV
- Wireless Bluetooth charger, alarm clock and speaker
- Complimentary WiFi
- Universal socket with dual USB
- Safe with power outlet
- Air purifier
- Electric blackout curtains
- Minibar with cocktails
- Nespresso machine
- Closet with terrycloth robes and yoga mat
- Anantara Spa amenities, hairdryer, make-up/shaving mirror and bodyweight scales

ADDITIONAL SUITE FEATURES

- Dining and living area
- 65" flat-screen HD TV
- Bose Bluetooth soundbar

GUEST SERVICES

- Limousine service and airport transfers
- Valet service and indoor parking
- 24-hour security
- 24-hour reception
- Foreign currency exchange
- Laundry and room service
- Babysitting



KASARA BENEFITS

- Refreshments from 12:00 pm to 5:00 pm at Brit Bar and The Verandah
- Social hour cocktails and canapés from 3:00 pm to 5:00 pm at Brit Bar and The Verandah
- 20% savings on dining (excluding alcohol) and spa
- Laundry service — six pieces per day (excluding dry cleaning and express service)
- Access to local and international digital newspapers
- Laptop available for day use upon request
- Late check-out until 2:00 pm (subject to availability)

EXCLUSIVELY FOR KASARA RIVERFRONT SUITE GUESTS

- In-suite check-in and a personalised welcome by management
- A welcome bottle of sparkling wine
- Daily reserved breakfast table at Bodhi Terrace from 6:30 am to 10:30 am, or in-suite breakfast from 7:00 am to 11:00 am
- One roundtrip transfer between the resort and either the Old Town or Nimman area

EXCLUSIVELY FOR KASARA POOL SUITE GUESTS

- As for Kasara Riverfront Suite guests
- One floating breakfast from 7:00 am to 11:00 am



Serviced apartment accommodation

Anantara Chiang Mai Serviced Suites offers an exclusive base from which to take in the sights of the Lanna capital. Wander to the nearby night bazaar. Cycle around the old city moats. Explore the alleys teeming with hip cafés, modern art galleries and golden temples.

Connected by a walkway to Anantara Chiang Mai Resort just across the road, serviced suite guests enjoy full access to its restaurants, bars, fitness centre and award-winning spa.

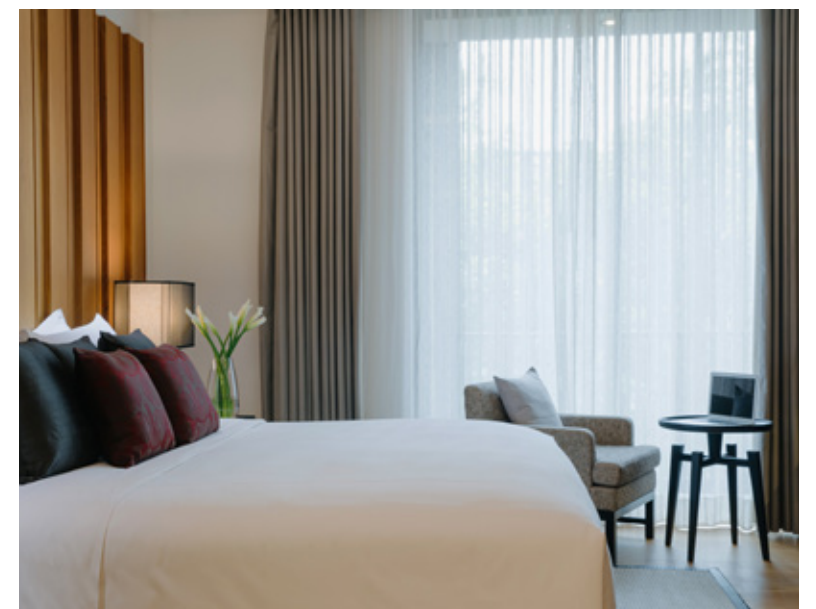


ONE BEDROOM SUITE

Suites are ideal for business travel or long-term stays. Enjoy a morning espresso on your balcony. Refresh in the tub or rain shower before heading out for the day. Spend evenings in with a home-cooked meal, room service, or a personal chef to prepare dinner.

PREMIER ONE BEDROOM SUITE

Premier suites enjoy higher-floor views, as well as easy access to the rooftop. Contemporary design is spiced with Thai accents and materials, bathed in natural light through floor-to-ceiling windows. Spend quiet days lounging by the rooftop pool with a cocktail in hand.





TWO BEDROOM SUITE

Enjoy all the comforts of home on your holiday in the heart of the city. Two ensuite bedrooms open onto a shared living and dining room. Cooking and laundry facilities make travelling with children a breeze. Prepare meals in your fully equipped kitchen, then dine together while watching a movie.



PREMIER TWO BEDROOM SUITE

Premier suites boast easy access to the rooftop pool and bar, as well as two ensuite bedrooms and spacious shared living. Enjoy meals prepared in your kitchen, from the resort, or whipped up by a personal chef.



THREE BEDROOM SUITE

Our most expansive suite is ideal for entertaining while in the city. Three ensuite bedrooms open onto an elegant living and dining room. Host dinner parties with a personal chef and waiters for the evening. Unwind afterwards on your balcony or soaking in the tub.

SUITE FEATURES

- King, queen or twin beds
- Bathroom with rain shower and terrazzo tub
- Closet with safe
- Private balcony
- Living room with writing desk
- Dining area
- Kitchen with stove, fridge and microwave
- Cooking equipment and tableware
- Washer and dryer
- Flat-screen LCD TV
- Complimentary WiFi
- Pets allowed

GUEST SERVICES

- Limousine service and airport transfers
- Indoor parking
- Guest relations
- Foreign currency exchange
- Housekeeping and laundry service
- Room service
- In-room chef and massage options
- 15% off dining and spa at the resort
- Babysitting
- Tours and excursions





Culinary experiences

THE SERVICE AT 1921 HOUSE

The heart of the resort experience is the magnificent 100-year-old heritage house that serves as our contemporary steakhouse and grill. Here, prime meat cuts and in-house dry-aged beef are paired with fine wines.

Lunch: 12:00 pm — 3:00 pm
 Dinner: 5:30 pm — 10:00 pm
 Seating capacity: 86 people

BRIT BAR AT 1921 HOUSE

Downstairs, the private members' club of Her Majesty's secret service is the place for wines, whiskies, cigars, cocktails and conspiratorial conversations late into the night.

12:00 pm — 12:00 am (Thursday to Saturday)
 12:00 pm — 11:00 pm (Sunday to Wednesday)
 Seating capacity: 30 people



THE VERANDAH AT 1921 HOUSE

A relaxed al fresco setting surrounded by verdant lawn, the breezy verandah of our teak mansion is where all-day bites and our signature afternoon tea can be enjoyed.

12:00 pm — 12:00 am
 Afternoon tea: 2:00 pm — 5:00 pm
 Seating capacity: 30 people



BODHI TERRACE

The riverfront is the setting for laidback breakfasts, and for lunch and dinner, Thailand's favourite regional cuisines infused with the rich overlapping history and flavours of Southeast Asia.

Breakfast: 6:30 am — 10:30 am
Lunch: 12:00 pm — 2:30 pm
Dinner: 5:30 pm — 10:00 pm
Seating capacity: 120 people

BUBBLES ROOFTOP BAR

Chiang Mai's most exclusive rooftop bar is perched over the river, with champagne cocktails and bar bites served beginning at sundown.

5:30 pm — 10:30 pm
Seating capacity: 50 people



DESIGNER DINING

Anantara's signature private dining experience is designed for celebrations to remember, with a table for two in an intimate corner of the resort, and a personal chef and butler for the evening.

On request

SPICE SPOONS COOKING CLASSES

Learn to create your favourite Thai recipes in a step-by-step cooking class. Savour your creations for lunch, returning home with new skills and recipes to impress.

On request



JAO Ping River Cruise

Our private pier is your departure point for magic on the river. Cruise down the Mae Ping to explore the old city, or simply lay back and admire the scenery with a glass of champagne in hand.



Remarks: • All cruises must be reserved at least one day in advance. • Departure and route are subject to weather and river conditions.



MORNING VOYAGE

9:00 am — 10:30 am

Set sail for adventure to nearby Wat Ket Karam, making merit at the temple, taking in views of Doi Suthep, and refuelling at one of the city’s most famous street food stalls.

AFTERNOON TEA CRUISE

2:00 pm — 3:30 pm

Linger longer on the water, indulging in the very English ritual of afternoon tea – royal or sparkling, the choice is yours – but in a decidedly tropical setting.

SUNSET CRUISE

6:00 pm — 8:00 pm

Sunset is the most magical time of day in Chiang Mai, as the sky stills and the river glitters. Enjoy accompanied by free-flow drinks and canapes, or a full four-course royal Thai dinner.

INTRODUCING THE HEAVENLY DIBBA YANA CHITTA

5:30 pm — 8:30 pm

Thailand’s most spectacular river boat has been designed by National Artist Chalermchai Kositpipat of the White Temple, Chiang Rai fame. Journey from this world to the next aboard the backs of mythical Lanna creatures gold and shimmering in the night.

The Experience

The Dibba Yana Chitta marries the best of Thai artistry, with highly exclusive seasonal tasting menus designed by the kingdom’s top chefs, award-winning local wines, and classical Thai music casting a heavenly ambience.

Guests of the Dibba Yana Chitta dinner cruise can borrow a traditional Thai costume to fully immerse themselves in the Thai experience.

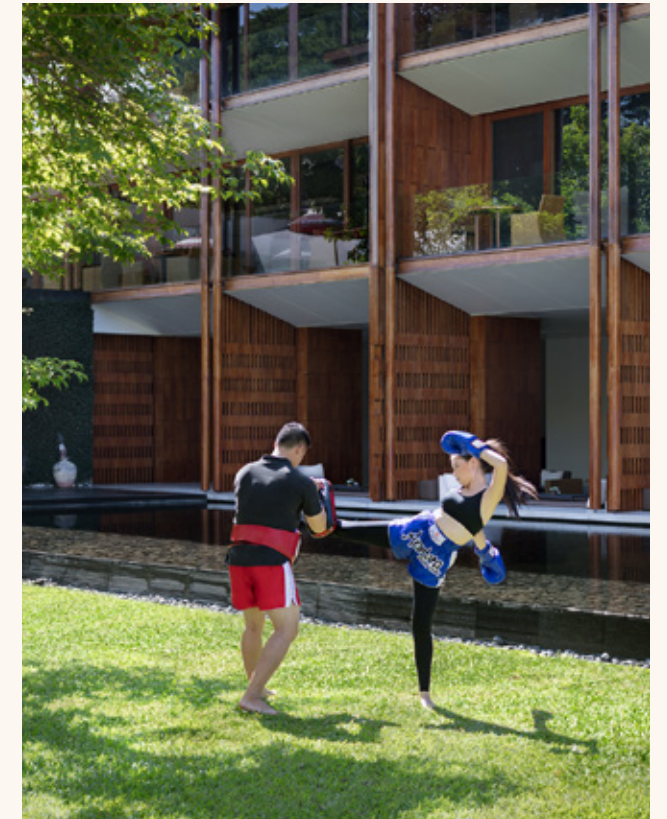


Diversions & facilities

With an ideal location, the city is yours to explore. Join our signature walking tour of the local neighbourhood with its charming temples and bridges. Venture further with the Streetwise Insider to explore the old city moats and taste your way through the market. Return at sunset to cruise down the Mae Ping River from our private pier.

Just beyond the city, the mountains for which Chiang Mai are famous await exploration. Soar over them in a hot-air balloon or paramotor. Visit waterfalls and elephant sanctuaries the classic Thai way, by tuk-tuk.

- Riverfront infinity pool
- Fitness centre
- Yoga and yoga fly
- Tai chi and Thai kickboxing
- Daily arts and crafts



Anantara Spa

A world of wellbeing awaits at the award-winning Anantara Spa. Explore our time-tested signature treatments that relax body and mind. Delve into traditional Lanna healing led by highly trained and certified specialists.

10:00 am — 10:00 pm

VIVID CHIANG MAI

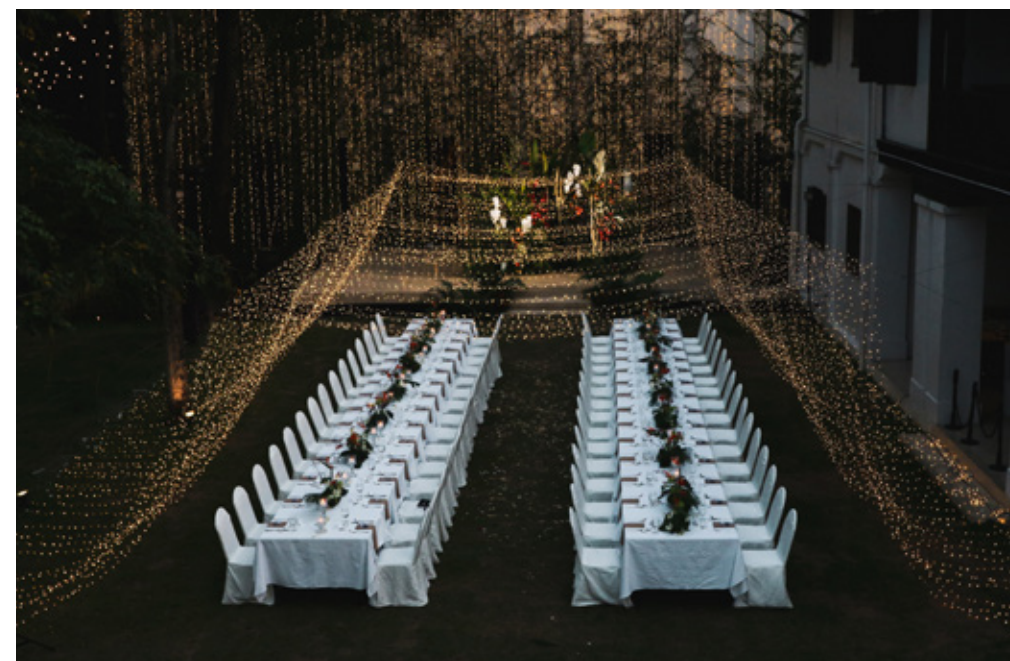
Located within the spa, our guests can also enjoy the latest in intravenous therapy, with a quick pick-me-up of hydration and vitamins providing the ultimate energy boost.

10:00 am — 10:00 pm



Events

Anantara Chiang Mai Resort can cater for corporate retreats, intimate weddings and celebratory events for up to 120 guests. The function room boasts the latest in technology, with a wall of screens operated by touch. The heritage house and surrounding lawns are ideal for receptions and banquets, with all details taken care of by a dedicated events planner.





Travel notes for a seamless journey

LANDSCAPE

Considered the cultural capital of Thailand, Chiang Mai has captivated visitors for centuries with stunning scenery and its relaxed pace. The remains of a storied past are evident with crumbling sections of the old walls dotted around the city. Its proximity to the Mae Ping River and major trading routes, along with its strategic position, flanked by mountains, means Chiang Mai has been of particular importance in the history of the region and as the former capital of the Lanna kingdom.

PEOPLE

One of Thailand's largest provinces, Chiang Mai is a melting pot of ethnic influences. There are a number of hill tribes located in the mountainous districts surrounding Chiang Mai, such as the Omkoi, Mae Jam, Chiang Dao and Mae Ai, who add a diverse variety to the local scene.

WEATHER

Chiang Mai weather patterns differ from the traditional divisions of spring, summer, autumn and winter. Instead, the region has three distinct seasons. The hot season between March and May is the warmest and driest period of the year with temperatures exceeding 35°C during the day. From June until October, southwest monsoons blow inland bringing moisture-laden winds from the Gulf of Thailand and Indian Ocean when temperatures range from 24°C to 31°C. November until February ushers in the cool season when dry temperatures of around 22°C to 28°C makes it a popular time to visit.

Tips for travellers

- Most visitors to Thailand are eligible for a 30-day tourist visa that can be arranged upon arrival at the airport.
- If you bring an electronic device that does not accept 220 volts (50 Hz) then you may require a voltage converter.
- Please dress modestly for any temple excursions, with shoulders and thighs covered as a mark of respect for the local culture.
- If exploring, make sure to wear comfortable shoes. It can be extremely hot during the middle of the day and the rainy season can mean short bursts of intense rain. Be sure to carry an umbrella and stay hydrated.
- Thailand's currency is the Thai baht and many restaurants and attractions accept major credit cards, including American Express, Visa, Mastercard and JCB.

Getting here

Anantara Chiang Mai Resort is located in the city's most exclusive neighbourhood which winds along the tranquil Mae Ping River. Yet it is only 15 minutes from the airport, where we will be glad to have a limousine waiting to pick you up. A car and driver can also be yours for the day to get out and explore.



AWARDS & RECOGNITION

- The 1st Grand Serandipian Hotel Champion Gold Award 2024
- Platinum Green Growth 2050
- Bronze, Best Overseas Hotel for a Couple's Getaway, Expat Living HK Magazine 2024
- #4 Best Thailand Resort, DestinAsian Readers' Choice Awards 2024
- T+L 500, Travel + Leisure US 2024
- #3 Best Up-Country Thailand Hotel, Travel + Leisure Luxury Awards Asia Pacific 2024
- #12 Best Resort in Thailand, Conde Nast Traveller UK Readers' Choice Awards 2024
- #13 Top Resort in Thailand, Conde Nast Traveler US Readers' Choice Awards 2024

ANANTARA CHIANG MAI RESORT

123 - 123/1 Charoen Prathet Road, Changklan, Muang, Chiang Mai 50100, Thailand

T +66 53 253 333 | E chiangmai@anantara.com

ANANTARA.COM