

Poetry & Places



ANANTARA
THE MARKER · DUBLIN
HOTEL



Join us on a cultural and culinary adventure and taste the literary charm of Ireland from the comfort of your chair, right here, in Anantara The Marker Dublin Hotel.

Luxuriate with a unique sensory indulgence featuring tastes and flavours inspired by Ireland's stunning landscapes and its beautiful poetic works. Transport yourself to the rugged cliffs of the wild west or a renowned historical building with every bite and immerse yourself in all that makes Irish culture so unique.

Today you will sample three pastries from the ten themed delights we have created. Each week, we will showcase three different pastries, taking you on a new culinary adventure around Ireland each time.

Your journey through the very best of Ireland and its storied past begins now.



Please inform your waiter if you have any dietary requirements or allergies.

Our allergen menu is on display at the bar for your perusal.

We have vegan & gluten free options available, please ask for more details.

We endeavour to source our fish from suppliers who follow sustainable practices.

Poetry and Places
Afternoon Tea
€65


Poetry and Places
Bollinger Champagne
Afternoon Tea
€85


Additional Glass of Bollinger Champagne €28

Poetry and Places
Bollinger Rosé Champagne
Afternoon Tea
€100


*Additional Glass of Rosé Bollinger Champagne
€38*

SANDWICHES

Burren Organic Irish Oak Smoked Salmon,
dill crème fraiche on traditional soda bread 

John Stone Grass-Fed Roast Beef,
horseradish, Achill sea salt on multigrain bread 

Cucumber & Chive Cream Cheese Finger Sandwich 

Irish Corn-Fed Chicken,
tarragon mayonnaise on brioche 

TEA BREADS


Freshly Baked Warm Buttermilk Scones, Fruit and Plain 


Fig Pudding Loaf


Signature Chocolate Guinness Cake

The Marker Battenberg

PRESERVES

Earl Grey Curd

G's Gourmet Jam 

Glenilen Clotted Cream and Farmhouse Butter 

All prices are inclusive of VAT. A discretionary service charge of 10% will be added to your bill for parties of 6 or more. Cash & credit card gratuities are shared amongst our service team.

PASTRIES

The Marker Battenberg 🌿

Renowned at Afternoon Tea around the world, we've put a unique twist on this iconic cake. Inspired by the hotel's geometric façade, we have mirrored the geometrical synergy of the building. The traditional pink and yellow sponge has been reimagined in white and chocolate, enveloped in vanilla caramel.



The Guinness Storehouse 🌿📍

One of Europe's most popular attractions and a historic cultural symbol of our wonderful city: The Guinness Storehouse is where the world's most iconic beer comes to life. As a tribute to this icon and to Arthur Guinness himself, we have created a chocolate and Guinness cake to look like a perfect pint of the 'black stuff'.



PLACES

We have chosen six of our very favourite places on this island and used them as inspiration for our pastries. Our pastry chefs will transport you to six special corners of Ireland.

They are:

The Ring of Kerry

Achill Island

Valentia Island

The Wild Atlantic Way

Kilkenny Castle

Newgrange

The Ring of Kerry 🍃



This spectacular drive takes you around one of the most beautiful places on earth: The Ring of Kerry. A reason to visit Ireland all on its own, rugged and impossibly green, it's dotted with wild coastline vistas, sparkling lakes, small villages and deserted golden beaches.

In tribute to the variation of all its beauty, we have put together a hazelnut choux bun with Chantilly whipped cream and bitter cocoa. Close your eyes and taste the wild.

Achill Island 📍

Rugged mountains and peat bogs, tall sea cliffs and perfect beaches, Achill is an incredibly spectacular island off County Mayo on the west coast and one of the last few remaining Gaeltacht areas (Irish-speaking regions). This has been the inspiration for saints, scholars and now our pastry chefs.

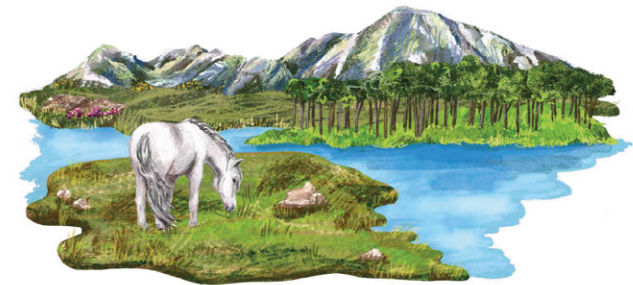
In honour of this amazing landscape we have created a gorgeous verrine with a bavarois of sheep's milk yoghurt from County Mayo, heather honey, oat crumble and finished with a smoked Achill Island sea salt.



Wild Atlantic Way 🍃

The Wild Atlantic Way is the longest coastal driving route in the world. It winds its way along 2,600 kms of our west coast, hugging the coastline from the Inishowen Peninsula in the north down to the picturesque town of Kinsale in Cork, passing by all of the best-loved towns, villages and scenery of the west of Ireland on the way.

Inspired by the steep cliffs that are found along much of this coast, we present an opera cake, flavoured with chocolate, rye and dillisk.



Valentia Island 🍃

A small island on the south west coast and home to less than 1,000 people, Valentia Island is rugged and often battered down against wild weather.

The island is one of the most romantic, untamed, and naturally perfect places to experience.

Our take on this amazing island features an almond and orange financier glazed with Valentia Island vermouth and an orange cream.



Kilkenny Castle 🍷📍

There are few, if any, buildings in Ireland that boast a longer history of continuous occupation than Kilkenny Castle. Built soon after the Norman conquest in the 13th Century it has dominated the city and the lives of its citizens for 800 years.

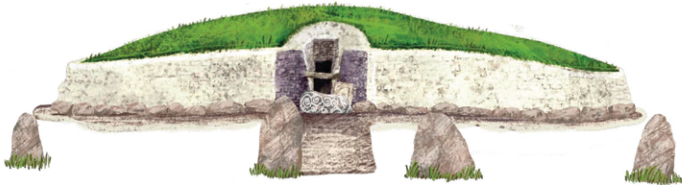
In tribute to the castle we created a cake flavoured with apples, treacle, syrup, spirit and balsamic vinegar, all from the local HighBank Orchards.



Newgrange 🍷

Perhaps one of Europe's best-known prehistoric monuments, Newgrange is strategically located on a rise overlooking the River Boyne near Drogheda. The monument is a grand passage tomb and was built during the Neolithic Period, around 3200 BC, making it older than Stonehenge and the Egyptian pyramids. Incredibly, its passageway aligns with the winter solstice sunrise which lights up the central tomb for a few minutes every year.

Newgrange has inspired an apple macaroon with short bread, malt and cream.



POETRY

With an incredibly rich literary heritage, Ireland has produced writers of some of the most famous texts. In homage to these writers and wonderful poets, we have selected six classic and modern works and created six unique pastries inspired by them.

They are:

The Wild Swans at Coole

by

William Butler Yeats

The Ballad of Molly Malone

by

James Yorkston

Lilac

by

Martina Dalton

Blackberry Picking

by

Seamus Heaney

Valparaiso

by

Pádraig de Brún

The Lost Heifer

by

Austin Clarke

The Wild Swans at Coole 🌿📍

by

William Butler Yeats

One of the best-known and most loved poems from Nobel Prize-winning William Butler Yeats. Find it. Read it. Love it.

*...But now they drift on the still water,
Mysterious, beautiful;
Among what rushes will they build,
By what lake's edge or pool
Delight men's eyes when I awake some day
To find they have flown away?*

The imagery of Yeats' words inspired a classic choux swan filled with a whipped ganache with Coole Swan Cream Liqueur.

The Ballad of Molly Malone 🌿📍

by

James Yorkston

The Ballad of Molly Malone (also known as Cockles and Mussels) is Dublin's unofficial anthem. Still sung all over the city today, legend has it that the song centres the story Mary Malone who died on 13 June 1699.

*In Dublin's fair city,
Where the girls are so pretty,
I first set my eyes on sweet Molly Malone,
As she wheeled her wheel-barrow,
Through streets broad and narrow,
Crying, "Cockles and mussels, alive, alive, oh!"
"Alive, alive, oh,
Alive, alive, oh,"
Crying "Cockles and mussels, alive, alive, oh".*

In memory of Molly, her song and indeed her city of Dublin, we have created a simply gorgeous chocolate madeleine with a chocolate caramel.

Lilac 🌿📍

by

Martina Dalton

This poet is a little different to the others. Martina is an award-winning poet from County Waterford who, in 2022, won Poem of the Year at the Irish Book Awards. Most importantly, Martina is our pastry chef's mother-in-law, and that makes her family to us.

*Its colour
ground from mountains.
Its waxy stars, soft,
the in-between colour
of a newborn's eyes.*

These words inspired us as we brought Lilac's imagery to life in a pastry made with a violet macaroon, berriollette curd and dried flowers.

Blackberry Picking 🌿📍

by

Seamus Heaney

Another Nobel Prize-winning poet who brings us back to our childhoods and those wonderful blackberry picking days:

*...You ate that first one and its flesh was sweet
Like thickened wine: summer's blood was in it
Leaving stains upon the tongue and lust for
Picking. Then red ones inked up and that hunger
Sent us out with milk cans, pea tins, jam pots
Where briars scratched and wet grass bleached our boots...*

His poem inspired us to create this blackberry tart, seasoned with Wicklow blackberry wine, and topped with a clove meringue.



Valparaiso

by

Pádraig de Brún

Patrick Joseph Monsignor Browne, was an Irish clergyman, mathematician, poet and classical scholar. Valparaiso is one of his best compositions:

*A ship arrived from Valparaiso,
Dropped its anchor in the bay,
Her name reminded me of kingdoms,
Sunlit countries far away.*

A chocolate and passionfruit barquette with caramelised white chocolate represents Valparaiso, a port city on Chile's coast.

The Lost Heifer

by

Austin Clarke

Clarke followed Yeats and wrote using classical Irish poetry techniques which brought a beautiful poetic style to a new generation. Here's a favourite:

*...Brightness was drenching through the branches
When she wandered again,
Turning sliver out of dark grasses
Where the skylark had lain,
And her voice coming softly over the meadow
Was the mist becoming rain...*

In celebration of this, we have created a caramelised honey and milk tart garnished with hazelnuts.



TEA MENU

A selection of organic & sustainable Ronnefeldt teas & herbal infusions

Ronnefeldt Tea is one of the world's leading tea brands which was founded over 200 years ago.

BLACK TEA

Irish Breakfast Tea

An extravagant full bodied Assam tea with the richest of aromas: strong, spicy and malty.

Darjeeling Summer Gold

This outstanding summer black tea has a flowery elegance and a deliciously well-balanced aroma.

Ceylon Decaffeinated

A carefully and gently decaffeinated Ceylon tea full of typical fruity and rich liveliness.

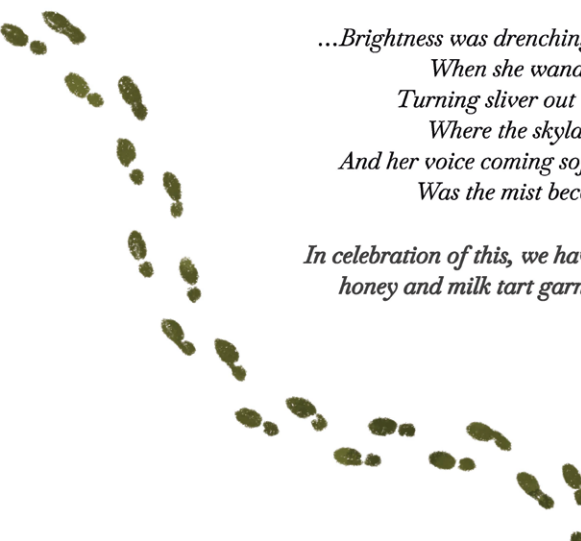
FLAVOURED BLACK TEA

Earl Grey

A delicate flowery autumn blend with the refreshing citrus aroma of bergamot.

Irish Whiskey-Cream

This malty Assam tea has a flamboyant fragrance of whiskey with a breath of cocoa. A guest favourite.



OOLONG TEA

Oolong Peach

The delight of an exceptional oolong with the fragrance of apricots and peaches.

GREEN TEA

Gunpowder

A favourite of the Ronnefeldt Tea Collection, rich rolled green tea leaves deliver a robust and invigorating tea.

Morgenatau

A fascinating tea composition with sencha, flower petals and the subtle fruity flavour of mango and lemon.

WHITE TEA

Pai Mu Tan & Melon White

The delicate aroma of melons lends the renowned Pai Mu Tan its typically fine sweetness..

ROOIBOS HOT CHOCOLATE

Irish Chocolate Cream

This tea brings warm soothing journey into an indulgent delight.



HERBAL INFUSION

Fruity Chamomile

Bitter-sweet chamomile complemented with aromatic orange peel.

Apple Crumble

Indulge with this fruit infusion tea; a perfect balance of sweet apple and spicy cinnamon flavours.

Sweet Nana

A refreshing blend of organic spearmint tea, which contains a high percentage of essential oils.

FRUIT INFUSION

Granny's Garden

Made with fruity fresh rhubarb and rounded off with the delicate sweetness of vanilla.

Cherry Cheesecake

A delightful fusion of sweet cherries and velvety cream. Bring joy to your tea ritual with this tea which has a harmonious and comforting flavour profile.

Get the Power

This fruit infusion has character: thanks to exquisite fruits, cola nut and red currant.

Your choice of coffee is also available.

Our coffee is roasted here in Dublin and certified as Fairtrade. We have a range of plant milk options available including soya, coconut, oat and almond.

