



CLASSIC THAI LUXURY POOL VILLAS

Anantara Mai Khao Phuket Villas is a peaceful retreat on the north-western tip of Phuket. The resort is inspired by traditional wooden houses from southern Thai villages which nestle in a series of lagoons that flow through the Bill Bensley designed gardens. Each of the villas house spectacular private pools with inset baths. A host of dining options are available whether in the privacy of a villa, a favourite locale within the resort for a romantic Dining by Design experience, Sea.Fire.Salt the beach fronted seafood restaurant or La Sala for some spicy Indian or Thai fare. Anantara Spa nestled within the tropical lagoon, offers a wide range of luxury therapies for the ultimate relaxing experience.

Opening Date:	2008
Address:	888 Moo 3, Mai Khao, Thalang, Phuket 83110 Thailand
Telephone:	+66 (0) 7633 6100
Facsimile:	+66 (0) 7633 6177
Central Reservations:	+66 (0) 2365 9110
Central Reservations Email:	reserveanantara@anantara.com
Email:	phuket@anantara.com
Web Address:	anantara.com/mai-khao-phuket



LOCATION

The resort is situated on the longest beach in Mai Khao on the north-western coast of Phuket Island and is cocooned by the untouched Sirinath National Park. Only 15 minutes drive from Phuket International Airport ensures that you remain connected at all times.

Management:	Anantara Hotels, Resorts & Spas
Ownership:	Minor International PCL
Cluster General Manager:	Serge Cuypers
	scuypers@anantara.com



Pool Villa - Exterior



Pool Villa - Interior

ACCOMMODATION

Resembling a traditional southern Thai village, 83 private Pool Villas range and 30 pool pavilions located amidst the adjacent tropical gardens at Avani+ Mai Khao from a spacious 186 to an impressive 389 square metres of luxurious space, set amidst glorious indigenous gardens and around a beautiful lagoon.

Pool Pavilion

At 195 sqm, pool pavilions provide space to luxuriate. Lounge on your sundeck, dive into your oversized pool, then retreat into the cool shade of your garden sala or indoor living room. Pavilion guests enjoy the 24-hour services of a Villa Host, there to serve you drinks by the pool or dinner under the stars.

Pool Villa

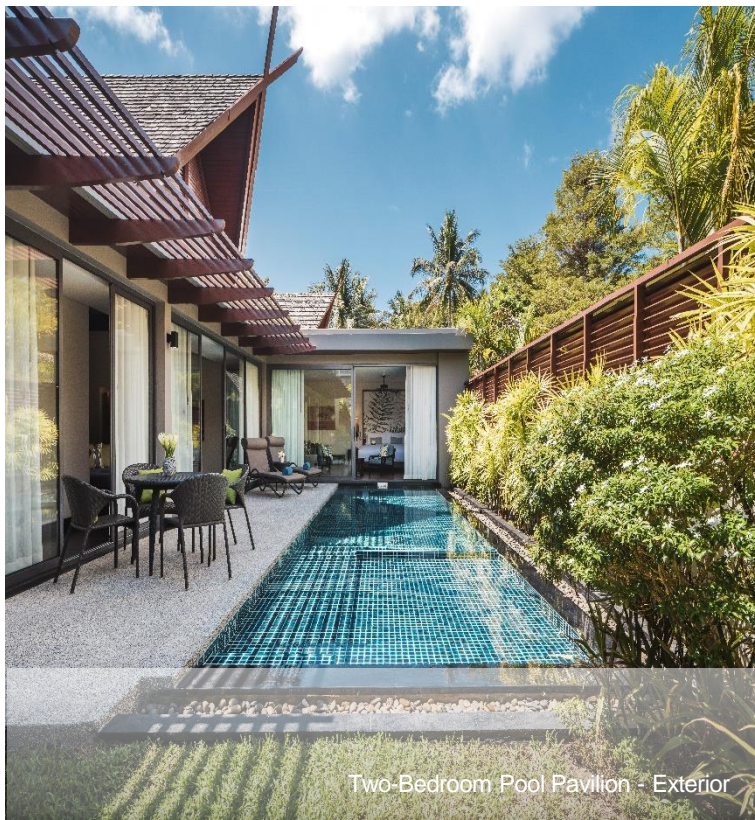
Located around our boutique resort, each Pool Villa is elegantly inspired by southern Thai style. Alfresco pleasures abound, from a personal pool with a built-in deep terrazzo bathtub to a hardwood sundeck with loungers and umbrellas and a sala with a comfortable daybed, all enclosed within a private garden.

Lagoon Pool Villa

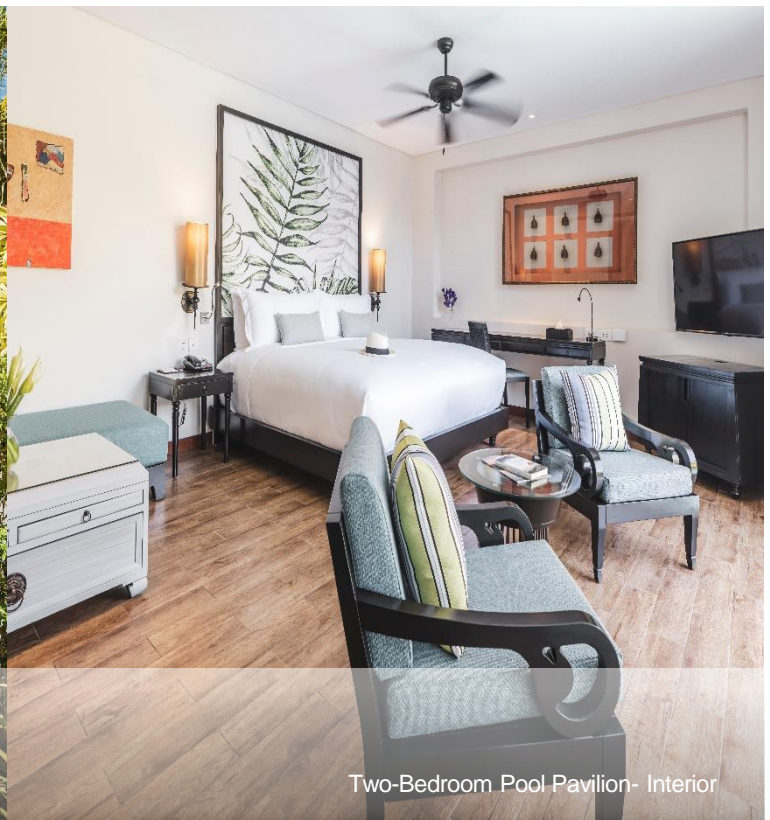
Offering a coveted setting beside the expansive tropical lagoon, Lagoon Pool Villas features a sumptuous bedroom and an en-suite bathroom with indoor and outdoor rain showers. Facing the lagoon, a personal pool with a built-in terrazzo tub, a sundeck with loungers, and a living Sala.

Sala Pool Villa

Nestled around the lagoon, Anantara's exclusive Sala Pool Villas offer a romantic sanctuary. In addition to a personal pool and sundeck, these villas boast the unique allure of a wooden walkway extending across the lagoon to an overwater Sala, with curtains that can be drawn for blissful privacy or opened for a stunning lagoon view.



Two-Bedroom Pool Pavilion - Exterior



Two-Bedroom Pool Pavilion- Interior

ACCOMMODATION

Two Bedroom Family Pool Villa

Each Two Bedroom Family Pool Villa offers luxurious seclusion and the ultimate island lifestyle to share as a family or with good friends. Elegant lounge and dining spaces, opening onto a garden courtyard where relaxing days can be spent enjoying the private pool, sun loungers and living sala, as well as the outdoor bathtub and with views of the lush lagoon.

Two Bedroom Pool Pavilion

Ideal for families, these pavilions boast two ensuite bedrooms that open onto a central living room. Slide open glass doors onto the oversized pool and splash away the day. Meals can be prepared in the kitchenette and enjoyed together out on the sundeck.

Two Bedroom Connecting Double Pool Villa

The Two Bedroom Connecting Double Pool Villas are ideal for families or friends traveling together. These villas are perfect for staying close without having to compromise on privacy. With two of everything – including pools – there is ample room for everyone to enjoy Anantara's luxuries in the comfort of their own space. Each master bedroom has its own king-sized bed and en-suite bathroom with the option to indulge in a bath or shower under the stars.



Two Bedroom Royal Villa by Jim Thompson

This luxurious two-bedroom pool villa is inspired by Jim Thompson fabrics and offers uncompromised luxury and a coveted location, just a few steps from the exquisite white sands of Mai Khao Beach. Covering an expansive 389 sqm of private space, giving guests a capacious and idyllic haven to relax in. Enjoy breathtaking sunsets from your personal 'floating' sala, take a dip in the 67 sqm private pool, or unwind in the sunshine on the generously proportioned timber deck.

Three Bedroom Connecting Pool Pavilion

With two pavilions interconnected and spread over 460 sqm of tranquil gardens, these accommodations are ideal for larger parties who also require privacy. Enjoy a quiet coffee overlooking your personal pool, then come together for convivial meals served up by your Villa Host.

Four Bedroom Connecting Pool Pavilion

Our most extravagant pavilions are 530 sqm in size and accommodate parties of up to 16. Splash in one of two pools under the sun. Unwind in both indoor and outdoor living spaces, then retire to sanctuary ensuite bedrooms equipped with the latest in technology and comforts.

VILLA FEATURES

Six villa types are defined by location within the Bill Bensley-designed flowering gardens or over the extensive lagoon, a central feature of the resort.

- King or twin bed
- Private 34 sqm swimming pool
- Outdoor sundeck with loungers and sun umbrellas
- Outdoor living sala
- Work desk with power sockets
- WiFi internet access
- Telephone with voicemail
- LED TV, DVD player, Bluetooth sound system
- In-room safe
- Individually controlled air conditioning with ceiling fans
- Resident's wine cellar
- Resident's bar filled with gourmet snacks and beverages
- Tea and coffee making facilities (Nespresso machine)

GUEST SERVICES

- Villa Host service
- Concierge team for all off site excursions
- Recreation team
- Wedding facilities
- The Gallery (boutique)
- Fitness Centre
- The Library (library, internet)
- Turtle Village (shopping and dining complex next to the villa resort)
- Babysitting service
- Meeting facilities including Boardroom
- Anantara Spa (spa treatment, hairdressing and beauty salon.)

ROOM TYPE	TOTAL	ROOM SIZE (SQM)	OUTDOOR SPACE SIZE (SQM)	ACCEPT ROLL AWAY	MAX OCCUPANCY
Pool Pavilion	14	120	75	Yes	3
Pool Villa	43	63	123	Yes	3
	33 Kings 10 Twin				
Lagoon Pool Villa	22	63	123	Yes	3
	20 Kings 2 Twin				
Sala Pool Villa	9	63	143	Yes	3
Two Bedroom Family Pool Villa	8	87	112	Yes	5
Two Bedroom Pool Pavilion	16	158	107	Yes	6
Two Bedroom Connecting Double Pool Villa		126	246	Yes	6
Two Bedroom Royal Villa by Jim Thompson	1	172	217	Yes	5
Three Bedroom Connecting Pool Pavilion		278	182	Yes	9
Four Bedroom Connecting Pool Pavilion		316	214	Yes	10
TOTAL	113				



DINING



La Sala

Start your day with an extensive exotic buffet breakfast which caters for all international tastes. For lunch and dinner, the lagoon-edged restaurant serves Tiffin by La Sala, spice themed Indian, Thai cuisine and an exquisite Afternoon Tea set, perfect for 2 persons. Take pleasure in watching nature unfurl as you leisurely dine on the terraces. The food is complimented with a collection of elegant wines from the Tasting Room.

Opening hours: Breakfast 7.00 am – 10.30 am
Lunch 12.00 pm – 10.00 pm
Dinner 12.00 pm – 10.00 pm
Afternoon Tea 2.00 pm - 6.00 pm

Cuisine: Thai, Indian, Afternoon Tea set
Capacity: 130



Sea.Fire.Salt.

A beach-fronted restaurant that boasts an interesting menu with salt pairings from around the world. The cuisine is inspired by fresh seafood direct from the Andaman then grilled over an open flame that are cooks in the style resembling the name of the restaurant. Sea, Fire and Salt. A perfect location for lunch and dinner, a sophisticated blend of design, music and lighting.

Opening hours: 12.00 pm-midnight
(last order at 10.00 pm)

Cuisine: Freshest seafood, fiery barbecues
and steaks from the grill

Capacity: 80



Tree House

Tree House is Phuket's most exclusive Omakase restaurant, named for the tree house in which it is perched overlooking tranquil lagoons. Each evening, the chef prepares an exquisite tasting menu, with ingredients that are flown in fresh from Japan. Explore our selection of rare sakes and imaginative Japanese-inspired cocktails.

Opening hours: 6.00 pm – 11.30 pm
(Wednesday to Sunday)

Cuisine: Japanese

Capacity: 20



Infinity Bar

This cool-vibed pool side and swim up bar has creative mixologists on hand to conjure up cocktails, smoothies, shakes and refreshing juices. Enjoy light snacks throughout the day by the pool overlooking the Mai Khao Beach.

Opening hours: 10.00 am-midnight
(last order at 10.00 pm)

Cuisine: Cocktails, and light snacks

Capacity: 12 around the bar



Dining by Design

Choose an intimate setting from dreamy locations throughout the resort and we will create a table just for two. Our chef will be craft a personalized menu, the Wine Guru can recommend fine wines and your private butler will tend to your every need. A magical experience not to be forgotten.



Sarasin Board room



Andaman East

EVENTS

Whether you are planning a fun-filled company trip, a boardroom meeting, a special celebration or a romantic wedding, the in-house events team will personalise your event for a truly unforgettable experience.

Anantara Mai Khao Phuket Villas offers state-of-the-art audiovisual technology, coffee breaks and dining experiences as well as an endless array of tailored excursions and activities. Productive meetings can be interspersed with rounds of golf on some of the world's best greens. Seamless conferences can be followed by Champagne cocktails on Major Affair, our 90' Sunseeker. Brainstorming and teambuilding with Spice Spoons, Anantara's signature cooking classes, visiting an ethical elephant sanctuary, island hopping and water sports will bring your visions to life.

MEETING ROOMS	AREA		DIMENSION (WXLXH)		THEATRE	CLASS ROOM	U-SHAPE	BOARD ROOM	BANQUET	COCKTAIL	H-SQUARE	CABARET
	SQM	SQ FT	METRES	FEET								
Andaman East	75.46	812	9.8 x 7.7 x 3	32.1 x 25.2 x 9.8	50	30	15	15	40	50	32	20
Andaman West	75.46	812	9.8 x 7.7 x 3	32.1 x 25.2 x 9.8	50	30	15	15	40	50	32	20
Andaman East & West	150.92	1,624	19.6 x 7.7 x 3	64.3 x 25.2 x 9.8	100	60	30	30	80	100	48	40
Sarasin Boardroom	19.98	215	5.4 x 3.7 x 3	17.7 x 12.1 x 9.8	-	-	-	12	-	-	12	-
Andaman Beach Lawn	1,250	12,032.33	25 x 50	73.35 x 164.04	-	-	-	-	400	-	-	-

FLOOR PLANS



1 Andaman East & West



2 Sarasin Boardroom



TAILORED EVENTS

Allow the team to fulfill fantasies with tailored events. Executive retreats, weddings with a hint of Thai, beachfront barbeques, family banquets and yachting experiences are showcased with exceptional cuisine, custom decorations and personalised entertainment. Have a beach meeting on beanbags, water based team building activities or indulge in glamorous dining with free flowing Champagne or local rum based cocktails.

WEDDING

Say “I do” on the shores of the Andaman Sea with a perfect backdrop of blue skies, cerulean waters and lush island landscapes, choose the tropical gardens or one of the indoor venues as the perfect intimate setting for a romantic wedding that will be remembered forever.

LEISURE

The setting of Anantara Mai Khao Phuket Villas is tranquil, but recreation and fun are always close by. Each day, the hotel has a whole host of activities on offer either in the resort or in the stunning surrounding area.

- Infinity swimming pool with swim-up bar
- Water sports including stand up paddle board, body board and kayak
- Two tennis courts
- The Fitness Center
- Muay Thai, traditional Thai boxing
- The Gallery boutique
- Executive meeting and boardrooms
- The Library
- Spice Spoons cooking classes
- Cycling tours
- Yoga and other fitness classes



SPICE SPOONS - ANANTARA COOKING SCHOOL

Immerse yourself in a rich and interactive culinary experience. Relax with a welcome drink and enjoy an introduction to indigenous gastronomy. Choose from a collection of authentic recipes, cook your favourites in a guided class and then savour your delicious creations. Leave with impressive new skills to entertain back home, as well as a Spice Spoons shopping bag containing a certificate, apron, chopping board and box of recipe cards.

ANANTARA SPA

Experience tranquillity amid silks and soothing fragrances at our Phuket spa resort. Imagine a tailor made journey that will help your mind, body and soul reach a blissful state of peace. The Spa at Anantara Mai Khao Phuket Villas, offers massages, elixirs, wraps and more in the open-air treatment rooms.

ANANTARA SIGNATURE MASSAGE

Combining revered eastern and western techniques with Anantara's expertise, purpose designed movements and a signature oil blend stimulate the circulation and deeply relax muscles, while reflexology clears energy blockages to promote overall wellbeing.

SPA FACILITIES

- Six luxurious treatment suites with private en-suite shower and bathroom facilities.
- Couple's treatments available for honeymooners, couple or friends.
- The Salon offers an extensive hair, makeup, waxing, pedicure and manicure for discerning gentlemen and ladies (advance reservation for hair or makeup service is required).
- Full range of professional skincare products, Comfort zone.

Opening hours: 10.00 am - 10.00 pm



EXCURSIONS

Embark on a journey of discovery through Thailand and indulge your senses with an assortment of activities.

- Private luxury boat excursion through the famed Phang Nga Bay on Major Affair, our 90' Sunseeker
- Late afternoon cruise on ajunk boat with on-board sunset cocktails
- Visit the ethical Phuket Elephant Sanctuary and whitewater rafting with private transfer
- Private fishing trip on a catamaran
- SCUBA diving excursions
- Rounds of golf at the award-winning Blue Canyon Golf and Country Club
- Sea kayak and limestone karst adventures
- Explore the Sino-Chinese Phuket Old Town walking market each Sunday evening
- Journey to the Enchanted Kingdom of Siam at Siam Niramit
- Spice Spoons cooking class with a visit to a local market with our Thai chef

AIRPORT TRANSPORTATION

Phuket has international and domestic terminals that are 15 minute's drive from the resort. The concierge team are pleased to arrange transfers to and from the airport, taxis are also available.



RESORT MAP



TRAVEL NOTES

Voltage

220 – 240 AC, 50 Hertz

Currency

Thai Baht (THB)

USD 1 ≈ THB 35 (subject to fluctuation)

Time Zone

GMT +7 hours

Climate

November – February (Dry season)

Temperatures range from 23°C to 31°C accompanied by refreshing winds. Natural fibres and breathable clothing are recommended.

March – May (Hot season)

Temperatures range from 30°C to 35°C. Natural fibres and breathable clothing are recommended.

June – October (Monsoon season)

Temperatures range from 24°C to 31°C. Refreshing rain showers of ten last for only a short period before the skies become sunny once again. Natural fibres, breathable clothing and light waterproofs are recommended.